

- Notes:
- 1) Refer to schematic #28283-1 on units with network gateways.
 - 2) OT1 and OT2 are located in the exhaust area of the inductor tunnel on their respective side.
 - 3) Optional remote mounted display interface PCB-HMI assembly with customer supplied fusing.

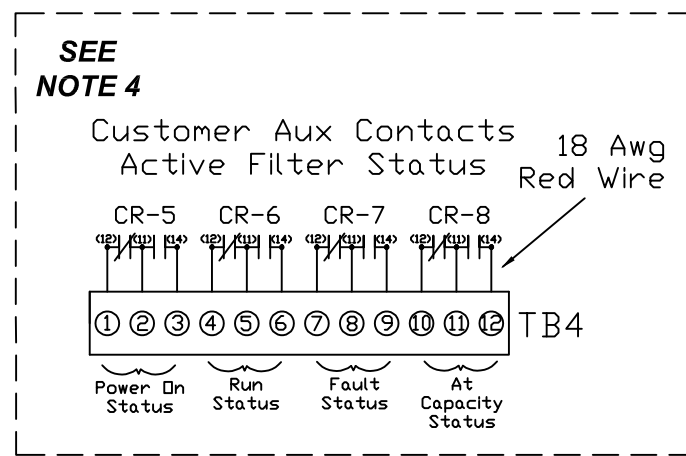
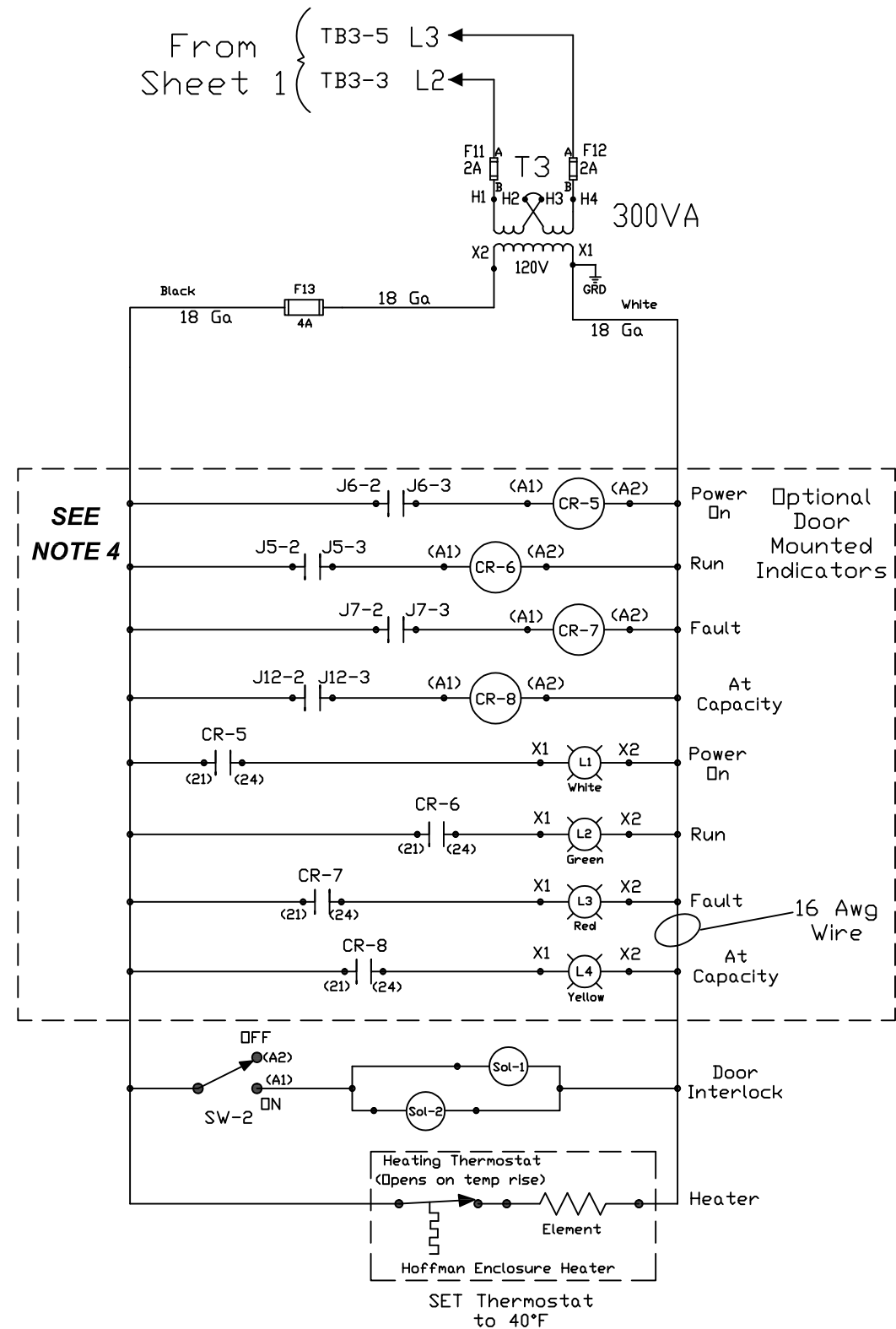
NO	REVISION	DATE	BY
B	6235 Consistency update	8/14/23	MJS
A	production release	2/28/20	MJS

TOLERANCES (EXCEPT AS NOTED)	
DECIMAL	.XX ± .02 .XXX ± .01
FRACTIONAL	± 1/32
ANGULAR	± 1/2°

TCL W132 N10611 Grant Drive
Germantown, WI 53022

Schematic, 600A/700A
Active Filter, N3R, MM

DRN. BY	MJS	DATE	2/28/20	DWG. NO.	B 31737
SCALE	N/A	APRVD.			SHT.1 OF 2



NOTES:
4) DASHED LINES SURROUND OPTIONAL DISPLAY INTERFACE PCB CIRCUITRY, DOOR MOUNTED HMI CONNECTION, INDICATOR LIGHTS, AND RUN KEY SWITCH WHEN DISPLAY INTERFACE PCB IS INTERNAL TO 3R ENCLOSURE.

				TOLERANCES (EXCEPT AS NOTED)
				DECIMAL
				.XX ± .02
				.XXX ± .01
				FRACTIONAL
				± 1/32
	SEE SHT1			ANGULAR
NO	REVISION	DATE	BY	± 1/2°

TCL W132 N10611 Grant Drive
Germantown, WI 53022

Schematic, 600A/700A
Active Filter, N3R, MM

DRN. BY	MJS	DATE	2/28/20	DWG. NO.	31737
SCALE	N/A	APRVD.		B	SHT. 2 OF 2