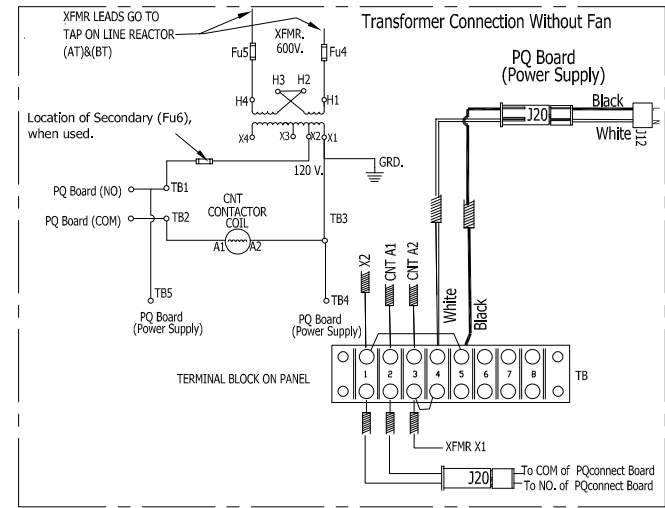
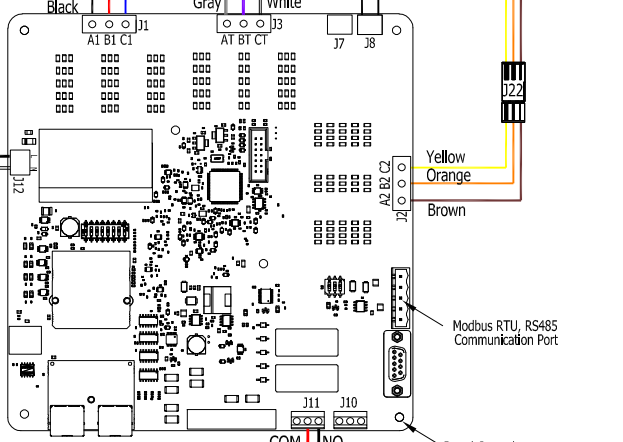
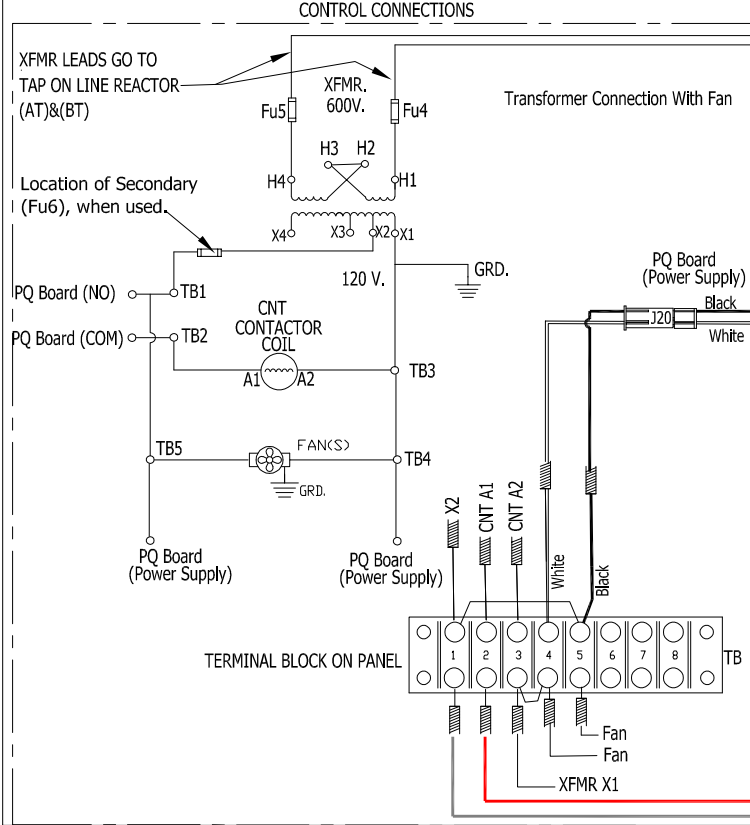
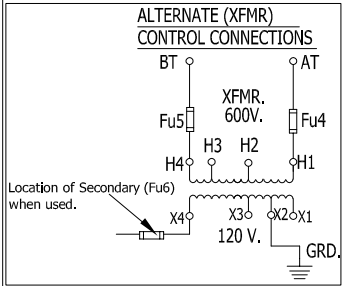
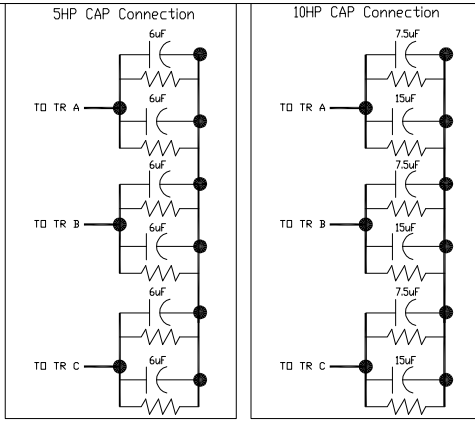


CUSTOMER CONNECTIONS
 75 HP AND BELOW : USE MINIMUM 60°C COPPER WIRE
 ABOVE 75 HP ; USE MINIMUM 75°C COPPER WIRE



Material(s) Shall be RoHS Compliant

TCL, LLC CLAIMS PROPRIETARY RIGHTS IN THE MATERIAL HEREIN DISCLOSED, IT IS SUPPLIED WITHOUT PREJUDICE TO ANY PATENT RIGHTS OF TCL AND MAY NOT BE REPRODUCED OR USED TO MANUFACTURE ANYTHING SHOWN THEREIN WITHOUT WRITTEN PERMISSION FROM TCL.				TOLERANCES (EXCEPT AS NOTED)			W132 N10611 Grant Drive Germantown, WI 53022	
				DECIMAL	XX + NA		HarmonicGuard Passive	
				FRACTIONAL	XXX + NA	3HP to 10HP, 600V Contactor/PQconnect		
A	As Designed	6/26/19	DSW	ANGULAR	NA	DRY IN DSW	DATE	6/26/19
NO	REVISION	DATE	BY	SCALE	NA	APPROVED	SIZE	31663-PQ

SHT.1 OF 1