

600V.
60 HZ.
LINE

FUSED DISCONNECT
OR CIRCUIT BREAKER
(CUSTOMER SUPPLIED)

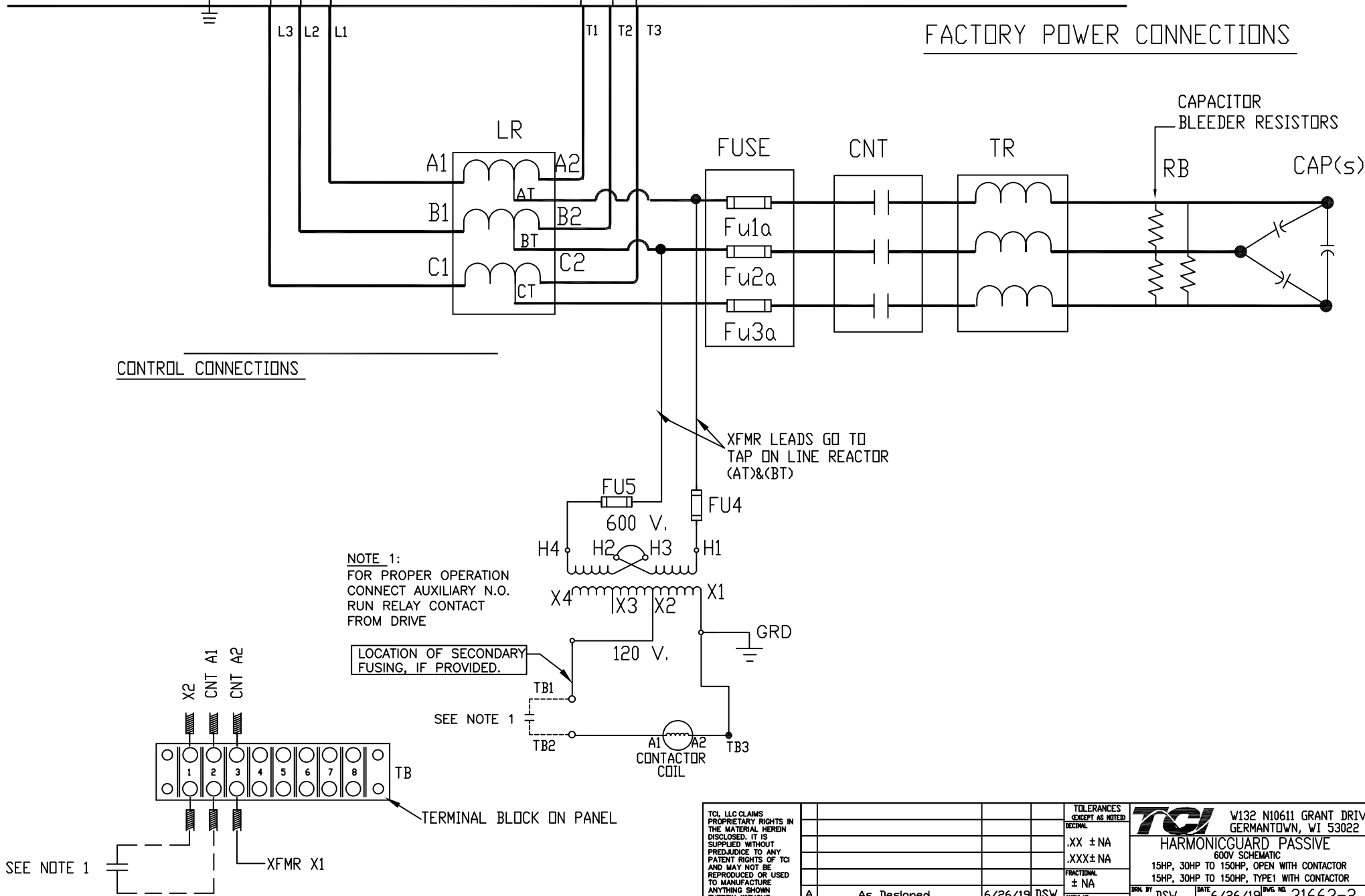
CUSTOMER CONNECTIONS

CUSTOMER CONNECTIONS

75 HP AND BELOW : USE MINIMUM 60°C COPPER WIRE
ABOVE 75 HP : USE MINIMUM 75°C COPPER WIRE

FACTORY POWER CONNECTIONS

CONTROL CONNECTIONS



NOTE 1:
FOR PROPER OPERATION
CONNECT AUXILIARY N.O.
RUN RELAY CONTACT
FROM DRIVE

LOCATION OF SECONDARY
FUSING, IF PROVIDED.

SEE NOTE 1

TERMINAL BLOCK ON PANEL

SEE NOTE 1

TCL, LLC CLAIMS PROPRIETARY RIGHTS IN THE MATERIAL HEREIN DISCLOSED. IT IS SUPPLIED WITHOUT PREJUDICE TO ANY PATENT RIGHTS OF TCL AND MAY NOT BE REPRODUCED OR USED TO MANUFACTURE ANYTHING SHOWN THEREIN WITHOUT WRITTEN PERMISSION FROM TCL.				TOLERANCES EXCEPT AS NOTED: DECIMAL .XX ± NA .XXX ± NA FRACTIONAL ± NA ANGULAR ± NA		W132 N10611 GRANT DRIVE GERMANTOWN, WI 53022 HARMONICGUARD PASSIVE 600V SCHEMATIC 15HP, 30HP TO 150HP, OPEN WITH CONTACTOR 15HP, 30HP TO 150HP, TYPE1 WITH CONTACTOR		
A	As Designed	6/26/19	DSW	SCALE	DSW	DATE	6/26/19	
NO	REVISION	DATE	BY	SCALE	DSW	DATE	6/26/19	
							DWG. NO.	31663-2
							SIZE	C
							SHT.	1 OF 1