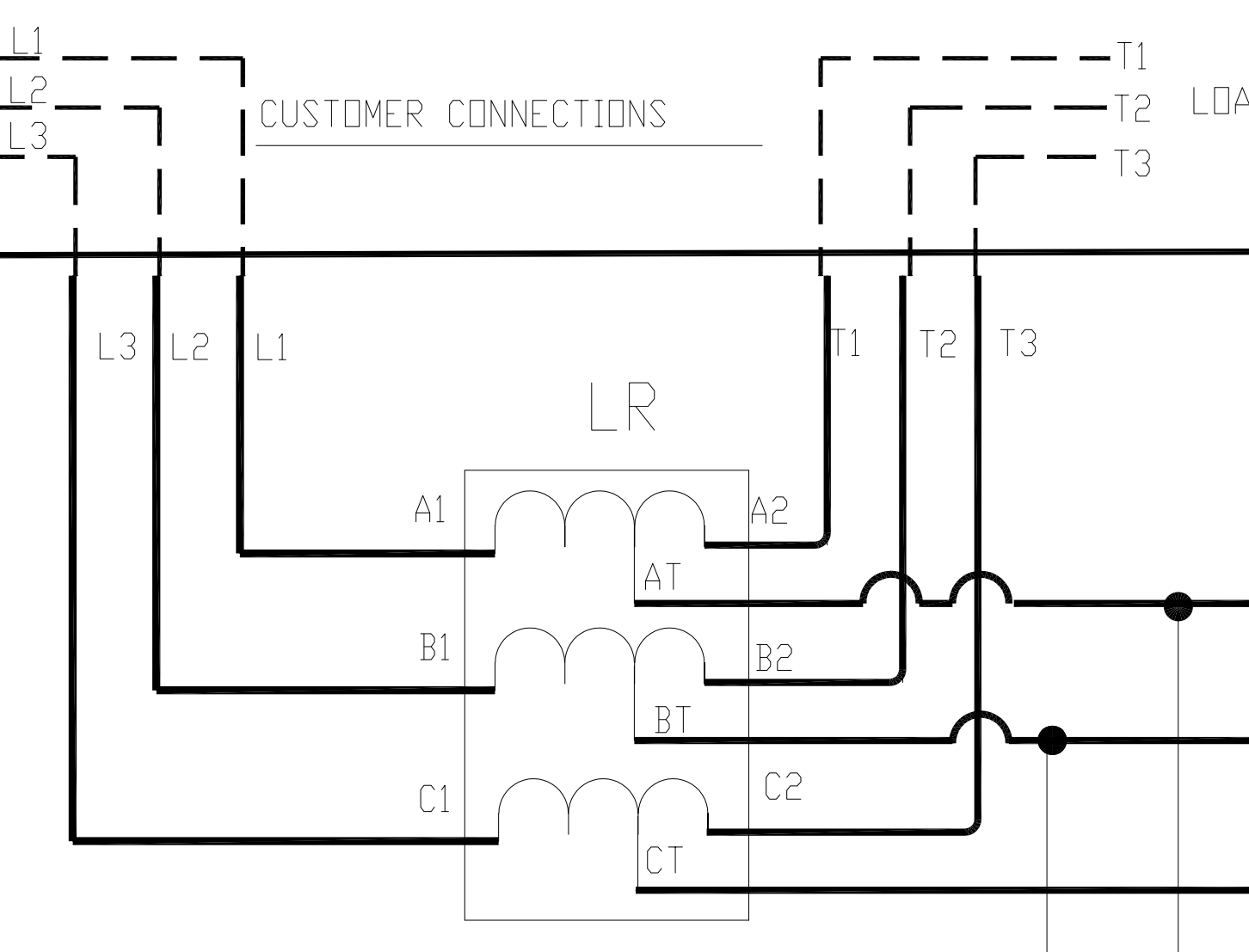


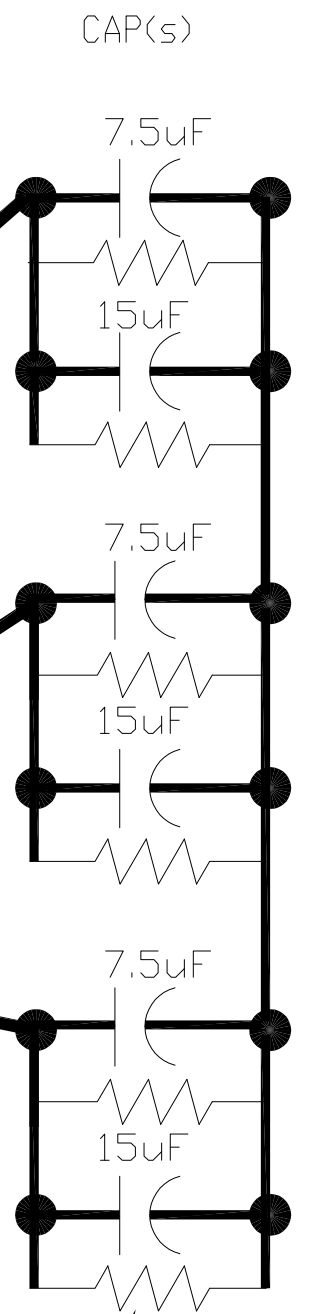
600V.
60 HZ.
LINE

FUSED DISCONNECT
OR CIRCUIT BREAKER
(CUSTOMER SUPPLIED)



CUSTOMER CONNECTIONS
75 HP AND BELOW : USE MINIMUM 60°C COPPER WIRE
ABOVE 75 HP : USE MINIMUM 75°C COPPER WIRE

FACTORY POWER CONNECTIONS



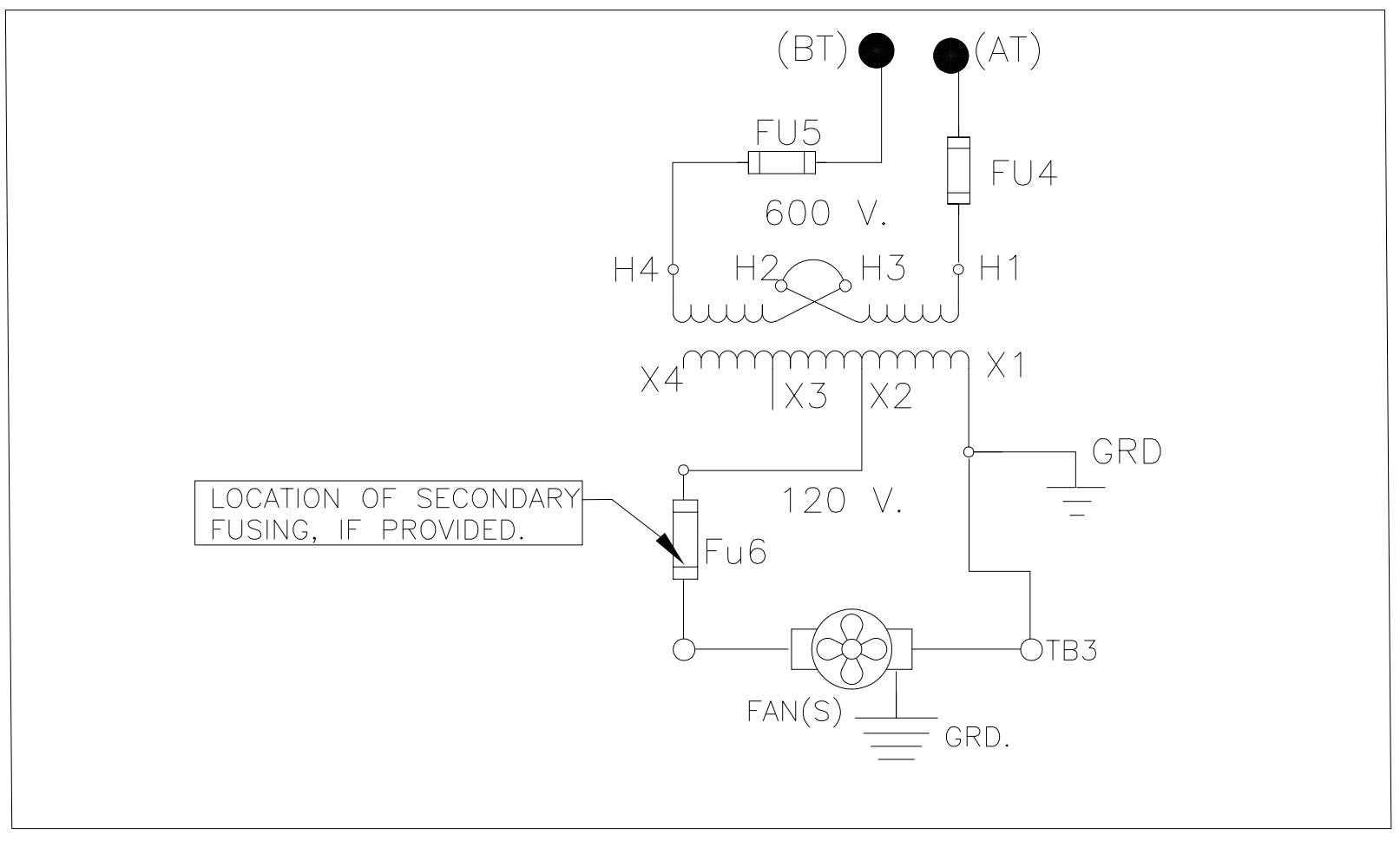
BLEEDER RESISTORS

CONTROL CONNECTIONS

(BT) (AT)
XFMR LEADS GO TO
TAP ON LINE REACTOR
(AT)&(BT)

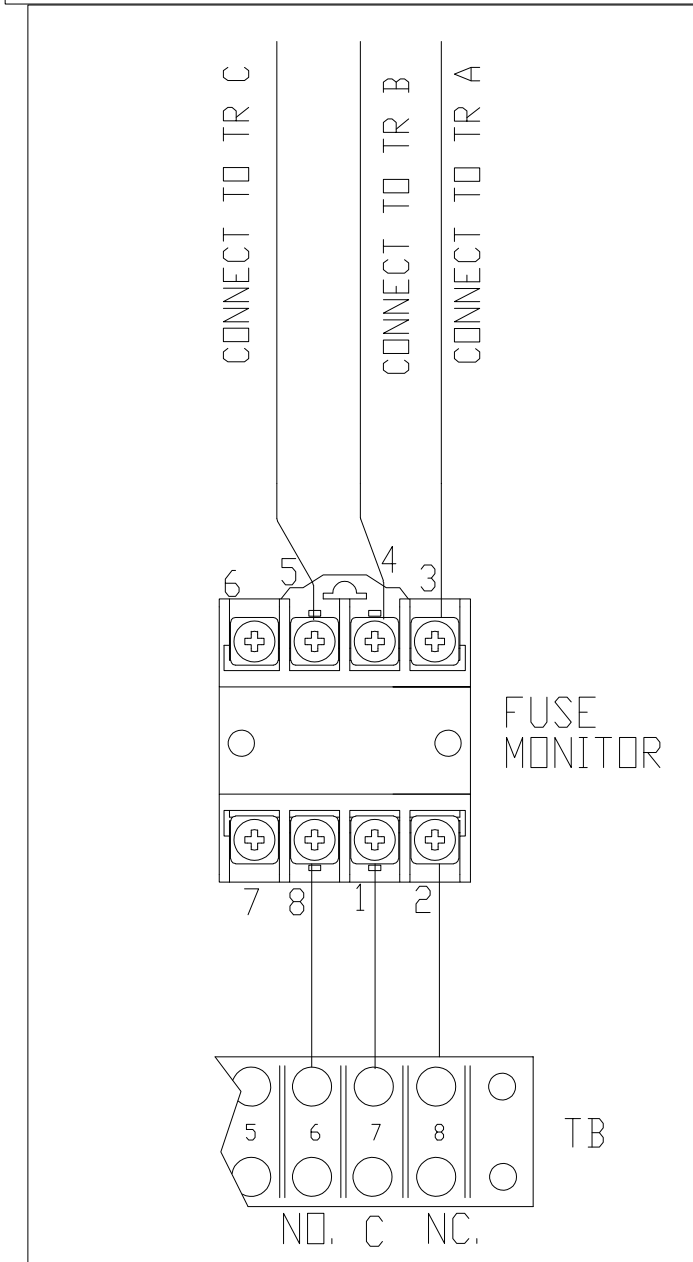
CONNECTIONS FOR
FUSE MONITOR
OPTION

CONTROL CONNECTIONS WITH IF FAN(S) SUPPLIED



LOCATION OF SECONDARY
FUSING, IF PROVIDED.

SCHEMATIC FOR FUSE MONITOR, OPTION



TERMINAL BLOCK ON PANEL

TCI, LLC CLAIMS PROPRIETARY RIGHTS IN THE MATERIAL HEREIN DISCLOSED. IT IS SUPPLIED WITHOUT PREJUDICE TO ANY PATENT RIGHTS OF TCI AND MAY NOT BE REPRODUCED OR USED TO MANUFACTURE ANYTHING SHOWN THEREIN WITHOUT WRITTEN PERMISSION FROM TCI.					TOLERANCES (EXCEPT AS NOTED): DECIMAL	W132 N10611 GRANT DRIVE GERMANTOWN, WI 53022 HGL PASSIVE 20HP, 600V SCHEMATIC STANDARD VERSION DRN. BY DSW DATE 10/10/17 DWG. NO. 30807-25 SCALE NONE SIZE C SHT. 1 OF 1
					.XX ± NA	
					.XXX ± NA	
					FRACTIONAL ± NA	
					ANGULAR ± NA	
NO	REVISION	DATE	BY			