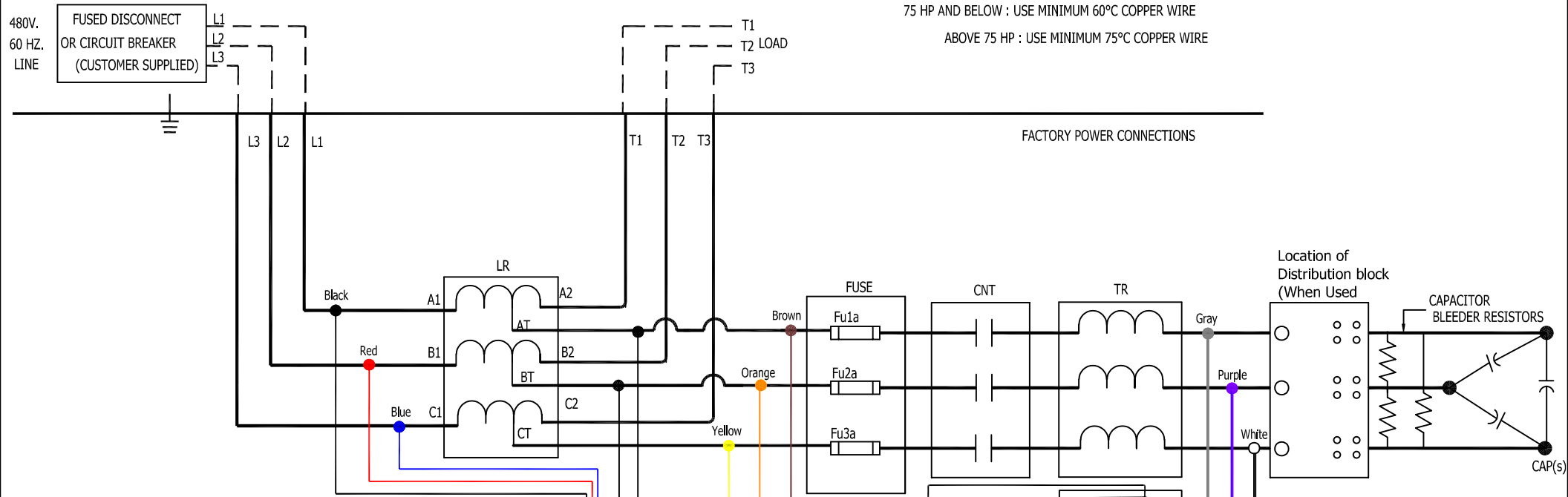


CUSTOMER CONNECTIONS

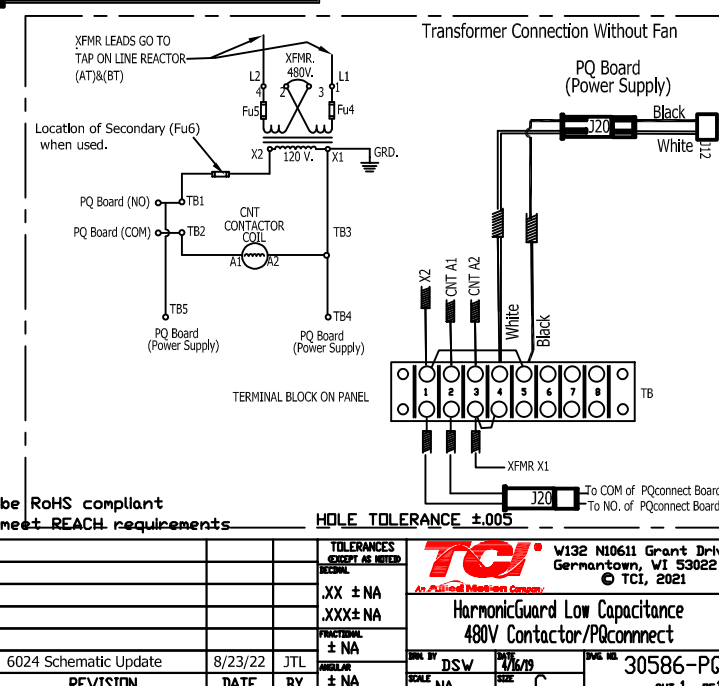
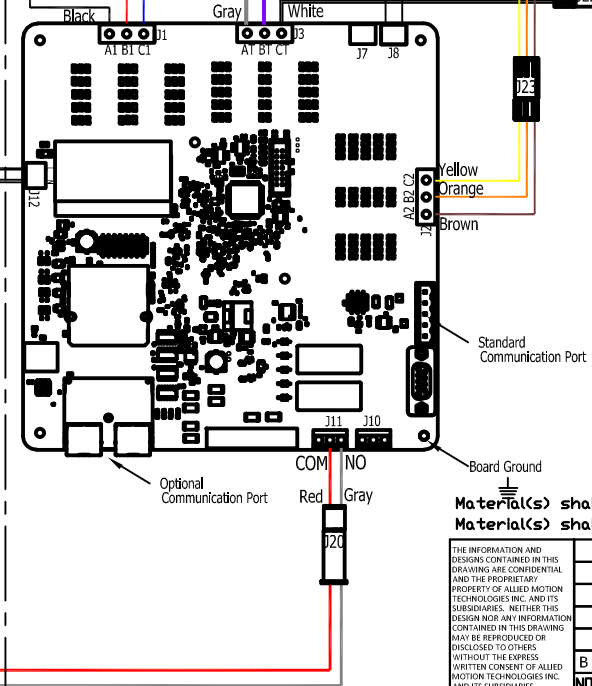
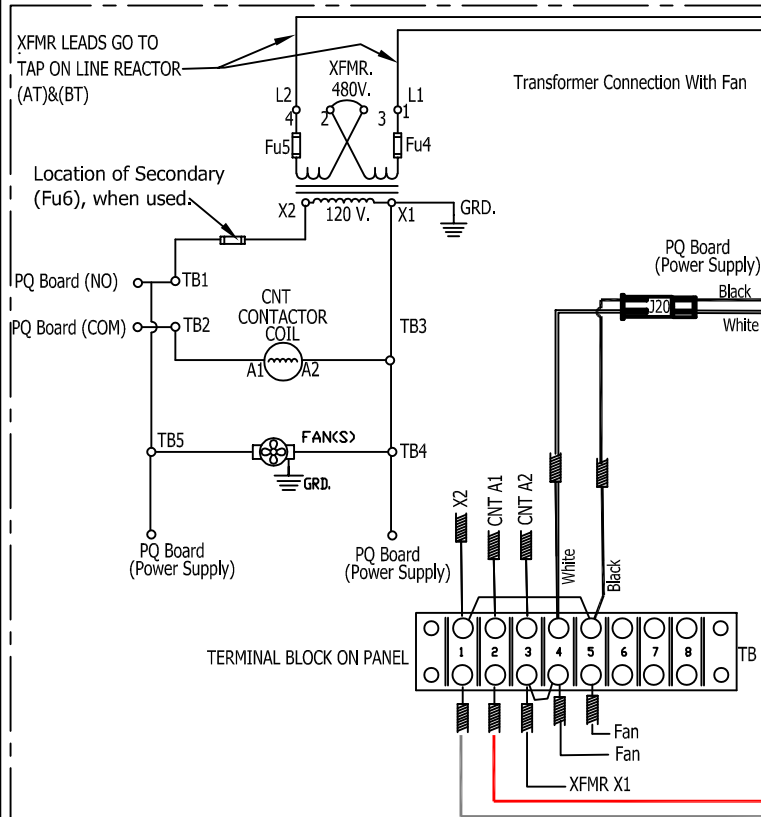
75 HP AND BELOW : USE MINIMUM 60°C COPPER WIRE

ABOVE 75 HP : USE MINIMUM 75°C COPPER WIRE



FACTORY POWER CONNECTIONS

CONTROL CONNECTIONS



Material(s) shall be RoHS compliant

Material(s) shall meet REACH requirements

HOLE TOLERANCE ±.005

THE INFORMATION AND DESIGN CONTAINED IN THIS DRAWING ARE CONFIDENTIAL AND THE PROPRIETARY PROPERTY OF ALLIED MOTION TECHNOLOGIES INC. AND ITS SUBSIDIARIES. NEITHER THIS DESIGN NOR ANY INFORMATION CONTAINED IN THIS DRAWING MAY BE REPRODUCED OR DISCLOSED TO OTHERS. WITHOUT THE EXPRESS WRITTEN CONSENT OF ALLIED MOTION TECHNOLOGIES INC. AND ITS SUBSIDIARIES.

NO	REVISION	DATE	BY
B	6024 Schematic Update	8/23/22	JTL

TOLERANCES UNLESS AS NOTED
.XX ± NA
.XXX ± NA
FRACTIONAL ± NA
ANGULAR ± NA

TCL W132 N10611 Grant Drive
Germantown, WI 53022
© TCL, 2021

**HarmonicGuard Low Capacitance
480V Contactor/PQconnect**

DESIGNED BY: DSW DATE: 7/6/19
SCALE: NA SIZE: C

30586-PQ
SHT.1 of 1