

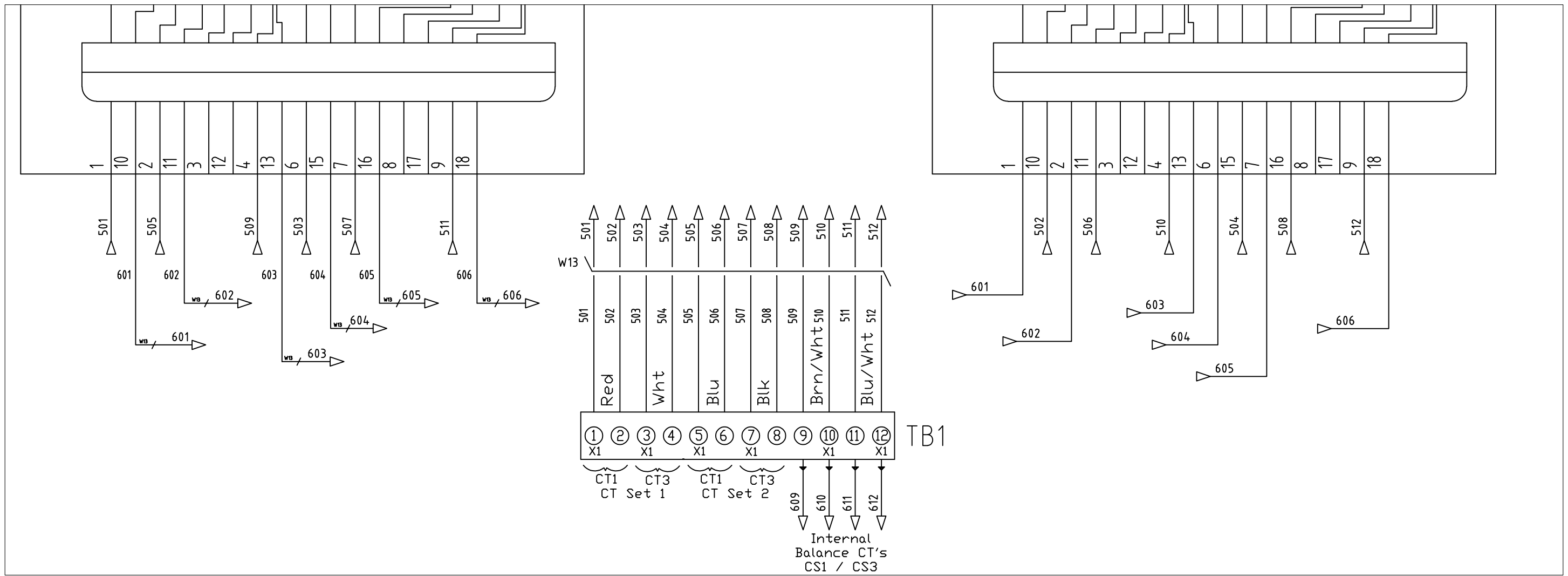
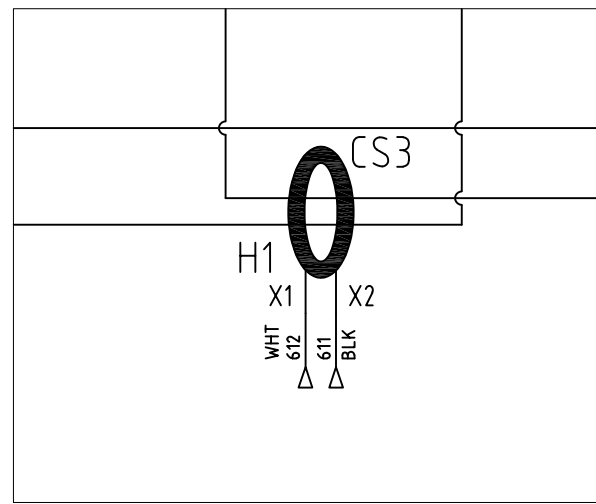
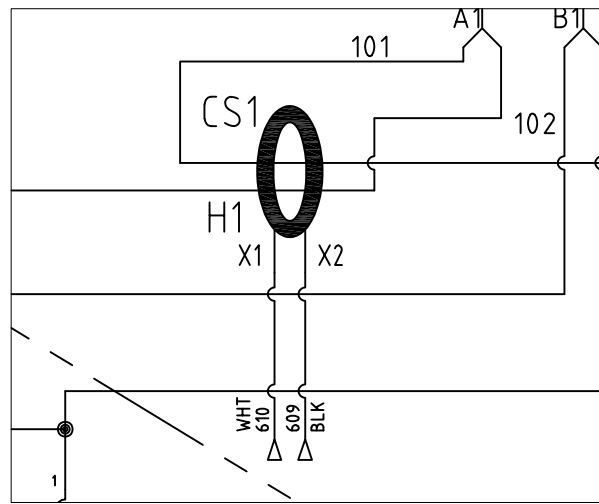
- Notes:
- 1) Refer to schematic #28283-1 on units with network gateways.
 - 2) OT1 and OT2 are located in the exhaust area of the inductor tunnel on their respective side.
 - 3) 120Vac Input Power for the Display Interface PCB can be tapped off TB4 of Control Transformer 120Vac Output.

THE INFORMATION AND DESIGNS CONTAINED IN THIS DRAWING ARE CONFIDENTIAL AND THE PROPRIETARY PROPERTY OF ALLIED MOTION TECHNOLOGIES INC. AND ITS SUBSIDIARIES. NEITHER THIS DESIGN NOR ANY INFORMATION CONTAINED IN THIS DRAWING MAY BE REPRODUCED OR DISCLOSED TO OTHERS WITHOUT THE EXPRESS WRITTEN CONSENT OF ALLIED MOTION TECHNOLOGIES INC. AND ITS SUBSIDIARIES.

NO	REVISION	DATE	BY
F	6235 Schematic Consistency	7/10/23	MJS
E	ADDED 380-415V CTL XFMR DETAIL	6/8/21	MJS
D	envr xfmr pwr pulled from TB3	10/12/20	MJS
C	Add wire colors to VFC	7/9/19	JHM
B	change thermostat setting to 90°F	3/12/19	MJS
A	new release	9/29/17	MJS

		W132 N10611 Grant Drive Germantown, WI 53022 © TCI, 2021	
Schematic, 400A/500A Active Filter, Type 12			
DRN. BY	MJS	DATE	9/29/17
SCALE	n/a	SIZE	A
DWG. NO.	30012		SHT. 1 OF 3

CT Wiring Detail



THE INFORMATION AND DESIGNS CONTAINED IN THIS DRAWING ARE CONFIDENTIAL AND THE PROPRIETARY PROPERTY OF ALLIED MOTION TECHNOLOGIES INC. AND ITS SUBSIDIARIES. NEITHER THIS DESIGN NOR ANY INFORMATION CONTAINED IN THIS DRAWING MAY BE REPRODUCED OR DISCLOSED TO OTHERS WITHOUT THE EXPRESS WRITTEN CONSENT OF ALLIED MOTION TECHNOLOGIES INC. AND ITS SUBSIDIARIES.

NO	REVISION	DATE	BY

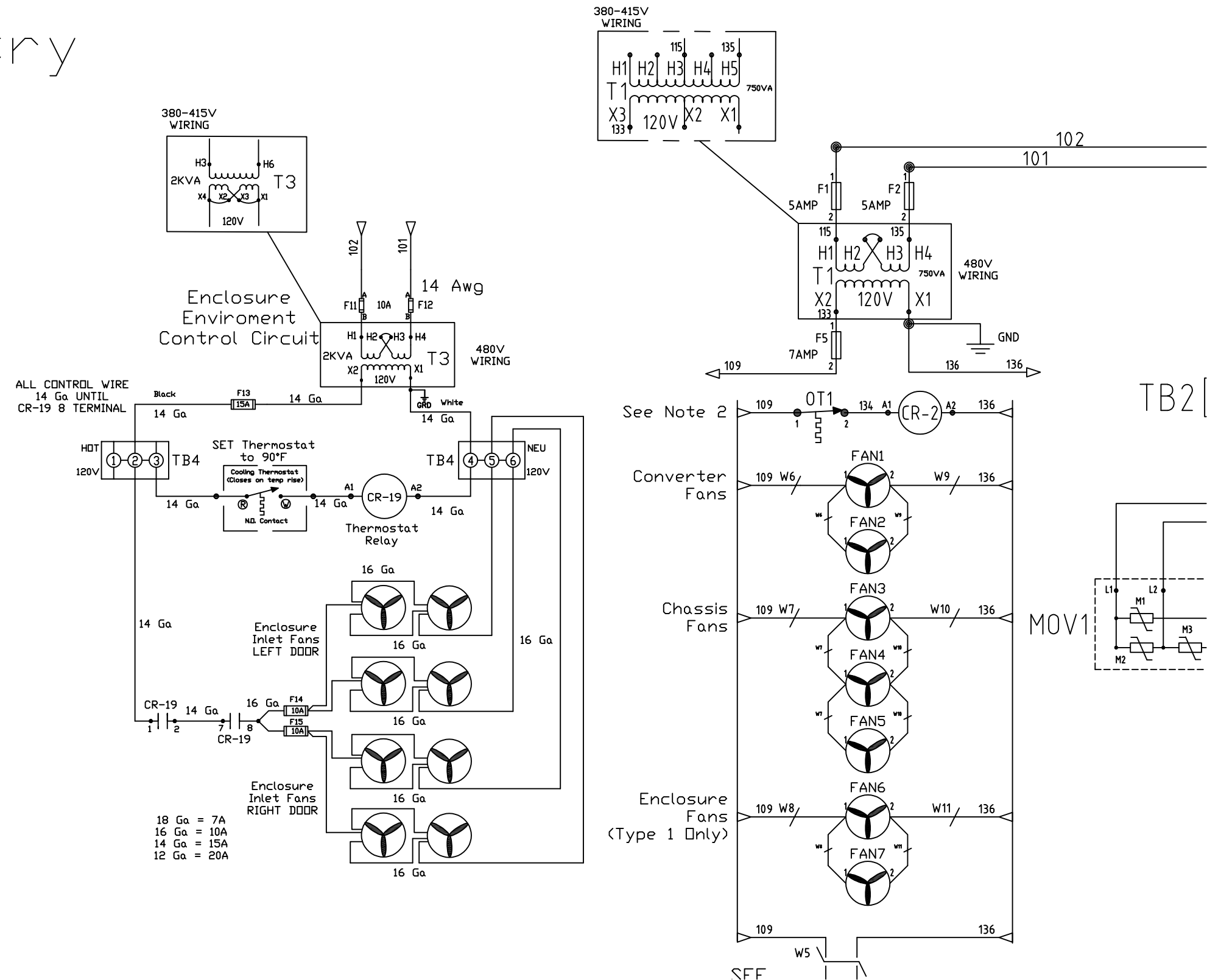
TOLERANCES (EXCEPT AS NOTED)
DECIMAL
.XX ± .03
.XXX ± .010
FRACTIONAL
± 1/32
ANGULAR
± 1°

TCI® W132 N10611 Grant Drive
Germantown, WI 53022
© TCI, 2021
An Allied Motion Company

Schematic, 400A/500A
Active Filter, Type 12, MM


DRN. BY	MJS	DATE	9/29/17	DWG. NO.	30012
SCALE	n/a	SIZE	A	SHT. 2 OF 3	

Control Circuitry Wiring Detail



THE INFORMATION AND DESIGNS CONTAINED IN THIS DRAWING ARE CONFIDENTIAL AND THE PROPRIETARY PROPERTY OF ALLIED MOTION TECHNOLOGIES INC. AND ITS SUBSIDIARIES. NEITHER THIS DESIGN NOR ANY INFORMATION CONTAINED IN THIS DRAWING MAY BE REPRODUCED OR DISCLOSED TO OTHERS WITHOUT THE EXPRESS WRITTEN CONSENT OF ALLIED MOTION TECHNOLOGIES INC. AND ITS SUBSIDIARIES.

NO	REVISION	DATE	BY

TOLERANCES (EXCEPT AS NOTED)		 W132 N10611 Grant Drive Germantown, WI 53022 © TCI, 2021 An Allied Motion Company	
DECIMAL		.XX ±.03	
		.XXX ±.010	
FRACTIONAL		± 1/32	
ANGULAR		± 1°	
DRN. BY	MJS	DATE	9/29/17
SCALE	n/a	SIZE	A
		DWG. NO.	30012
		SHT. 3 OF 3	