

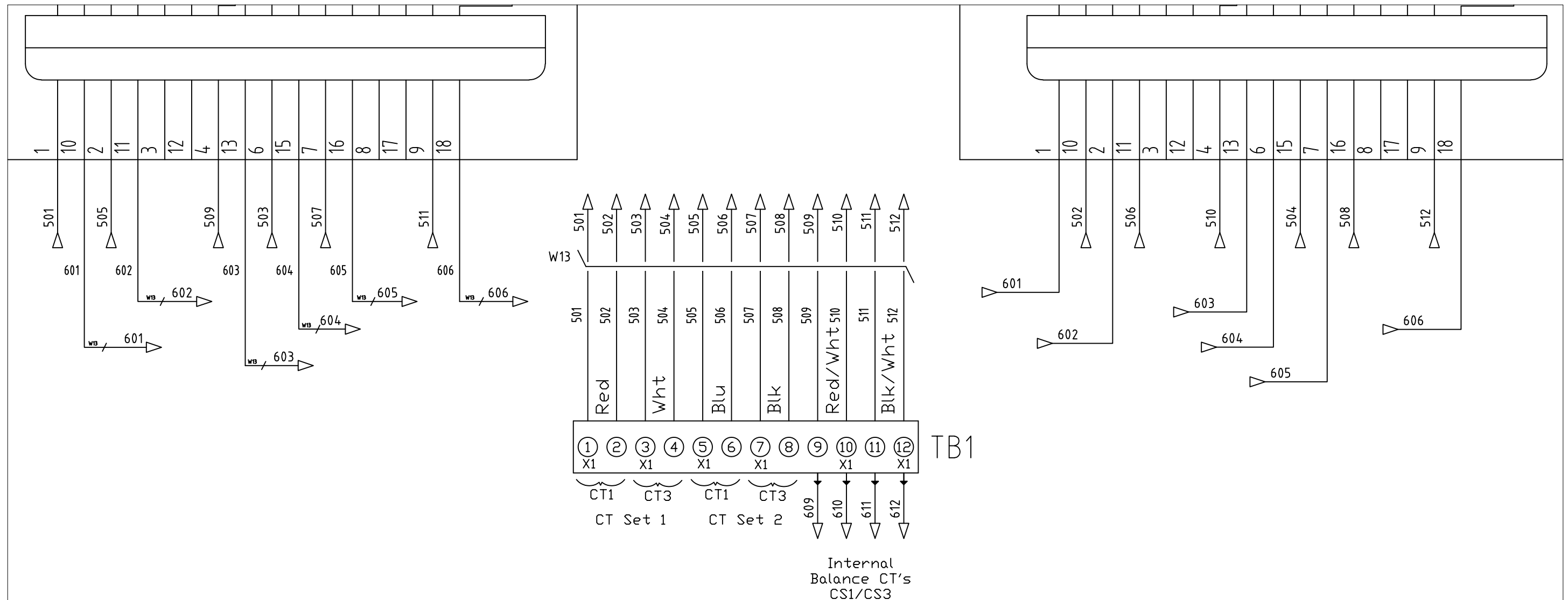
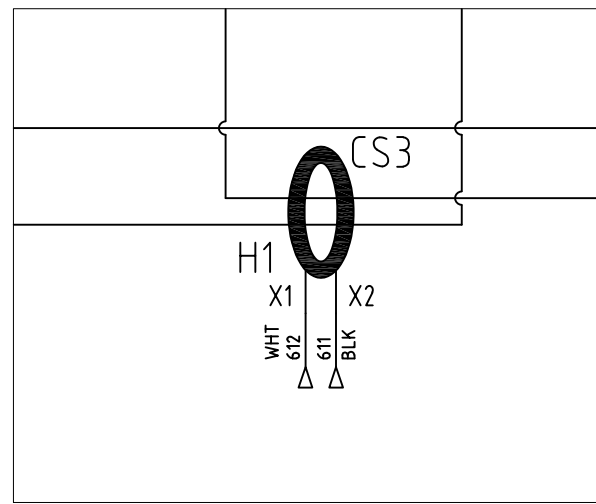
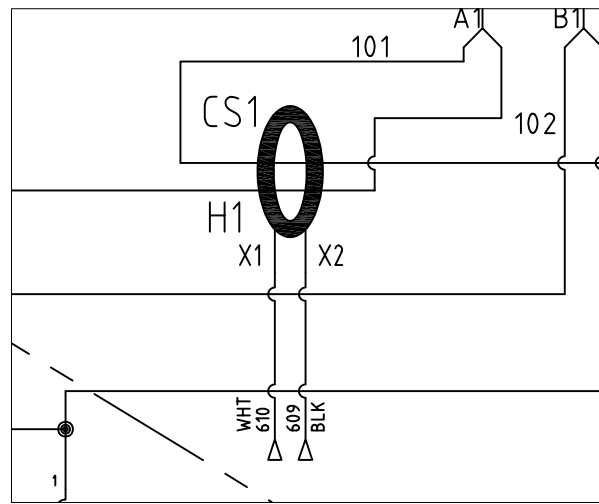
- Notes:
1. Refer to schematic #28283-1 on units with network gateways.
 2. OT1 and OT2 are located in the exhaust area of the inductor tunnel on their respective side.
 3. 120Vac Input Power for the Display Interface PCB can be tapped off the Control Transformer 120Vac Output secondary fuse or provided externally. For external wiring, follow all NEC guidelines.

NO	REVISION	DATE	BY
J	6235 Consistency Update	4/12/23	MJS
H	added J9 voltage feedback note	1/14/22	MJS
G	5762 CT consistency	10/28/21	JSG
F	120V source note	6/18/21	MJS
E	EC Cap Update 5358	8/17/20	MJS
D	ADD WIRE COLORS TO VFC	7/9/19	JHM

		W132 N10611 Grant Drive Germantown, WI 53022 © TCI, 2021	
Schematic, 400/500A Active Filter, Chassis/Type 1, Line Control			
DRN. BY	JJC	DATE	1/13/16
SCALE	1=1	SIZE	A
		DWG. NO.	29853-1
		SHT.1 OF 2	

THE INFORMATION AND DESIGNS CONTAINED IN THIS DRAWING ARE CONFIDENTIAL AND THE PROPRIETARY PROPERTY OF ALLIED MOTION TECHNOLOGIES INC. AND ITS SUBSIDIARIES. NEITHER THIS DESIGN NOR ANY INFORMATION CONTAINED IN THIS DRAWING MAY BE REPRODUCED OR DISCLOSED TO OTHERS WITHOUT THE EXPRESS WRITTEN CONSENT OF ALLIED MOTION TECHNOLOGIES INC. AND ITS SUBSIDIARIES.

CT Wiring Detail



THE INFORMATION AND DESIGNS CONTAINED IN THIS DRAWING ARE CONFIDENTIAL AND THE PROPRIETARY PROPERTY OF ALLIED MOTION TECHNOLOGIES INC. AND ITS SUBSIDIARIES. NEITHER THIS DESIGN NOR ANY INFORMATION CONTAINED IN THIS DRAWING MAY BE REPRODUCED OR DISCLOSED TO OTHERS WITHOUT THE EXPRESS WRITTEN CONSENT OF ALLIED MOTION TECHNOLOGIES INC. AND ITS SUBSIDIARIES.

NO	SEE SHT1	DATE	BY	TOLERANCES (EXCEPT AS NOTED) DECIMAL
	REVISION			.XX ±.03 .XXX±.010
				FRACTIONAL ± 1/32
				ANGULAR ± 1°

TCI® W132 N10611 Grant Drive
Germantown, WI 53022
© TCI, 2021
An Allied Motion Company

Schematic, 400A/500A
Active Filter, Line Side

DRN. BY JJC	DATE 1/13/16	DWG. NO. 29853-1
SCALE 1=1	SIZE A	SHT. 2 OF 2