

480V,
60 HZ.
LINE

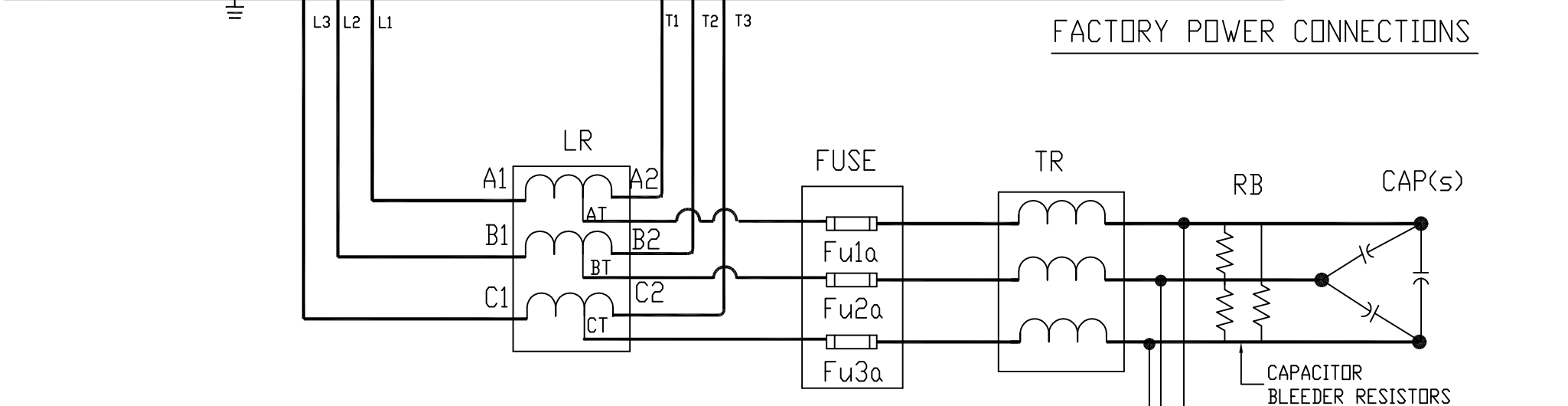
FUSED DISCONNECT
OR CIRCUIT BREAKER
(CUSTOMER SUPPLIED)

CUSTOMER CONNECTIONS

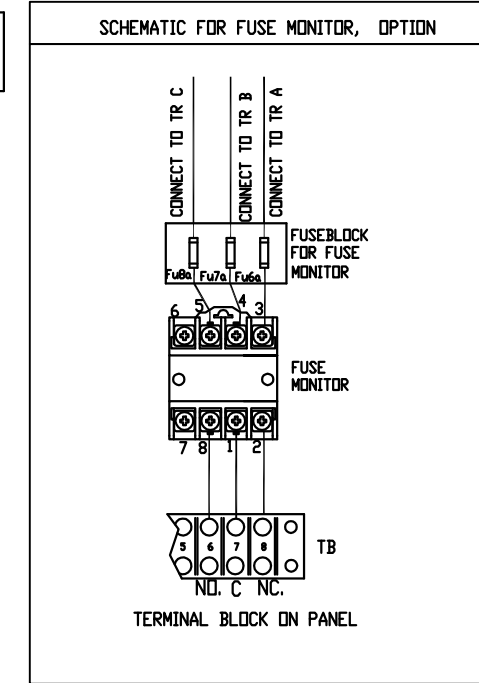
CUSTOMER CONNECTIONS

75 HP AND BELOW : USE MINIMUM 60°C COPPER WIRE
ABOVE 75 HP : USE MINIMUM 75°C COPPER WIRE

FACTORY POWER CONNECTIONS



CONNECTIONS FOR
FUSE MONITOR
OPTION



<small>TCL, LLC CLAIMS PROPRIETARY RIGHTS IN THE MATERIAL HEREIN DISCLOSED. IT IS SUPPLIED WITHOUT PREJUDICE TO ANY PATENT RIGHTS OF TCL AND MAY NOT BE REPRODUCED OR USED TO MANUFACTURE ANYTHING SHOWN THEREIN WITHOUT WRITTEN PERMISSION FROM TCL.</small>						TOLERANCES EXCEPT AS NOTED:	TCL W132 N10611 GRANT DRIVE GERMANTOWN, WI 53022 HARMONICGUARD PASSIVE 480V SCHEMATIC 15HP TO 150HP OPEN AND ENCLOSED TYPE1, AND 200HP OPEN, STANDARD VERSION. DWN BY: BWM DATE: 6/18/15 DWG. NO: 29597-S SCALE: NONE SIZE: C SHT. 1 OF 1
						DECIMAL	
						.XX ± NA	
						.XXX ± NA	
						FRACTIONAL ± NA	
A	AS DRAWN	6/18/15	BWM			ANGULAR ± NA	
NO	REVISION	DATE	BY			SCALE NONE SIZE C	