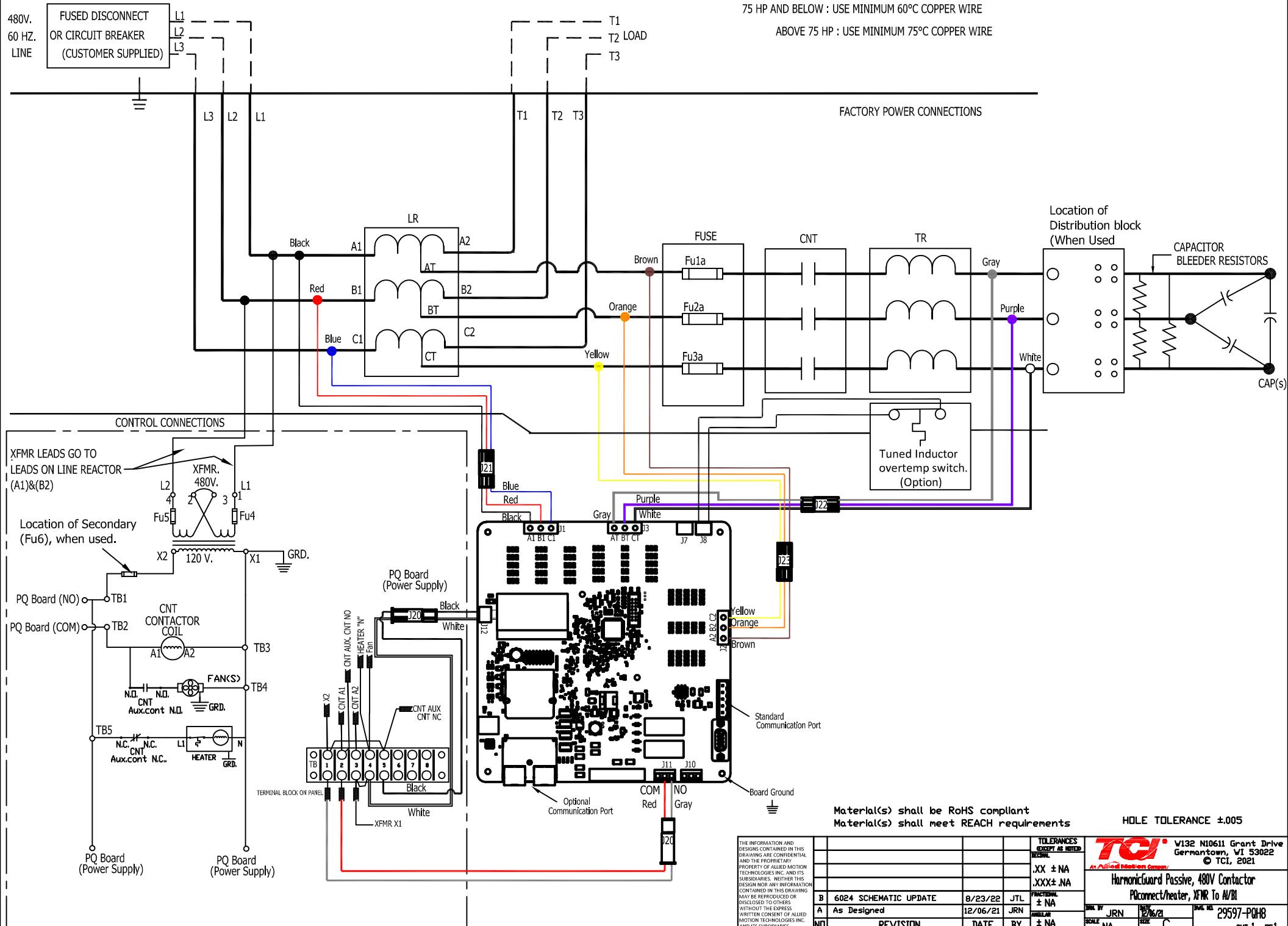


CUSTOMER CONNECTIONS

75 HP AND BELOW : USE MINIMUM 60°C COPPER WIRE

ABOVE 75 HP : USE MINIMUM 75°C COPPER WIRE



Material(s) shall be RoHS compliant
Material(s) shall meet REACH requirements

HOLE TOLERANCE ±.005

THE INFORMATION AND DESIGNS CONTAINED IN THIS DRAWING ARE CONFIDENTIAL AND THE PROPRIETARY PROPERTY OF ALLIED MOTION TECHNOLOGIES INC. AND ITS SUBSIDIARIES. NEITHER THIS DESIGN NOR ANY INFORMATION CONTAINED IN THIS DRAWING MAY BE REPRODUCED OR DISCLOSED TO OTHERS WITHOUT THE EXPRESS WRITTEN CONSENT OF ALLIED MOTION TECHNOLOGIES INC. AND ITS SUBSIDIARIES.

REV	DESCRIPTION	DATE	BY	SCALE
B	6024 SCHEMATIC UPDATE	8/23/22	JTL	
A	As Designed	12/06/21	JRN	
NO	REVISION			

TOLERANCES EXCEPT AS NOTED:			W132 N10611 Grant Drive Germantown, WI 53022 © TCI, 2021
.XX ± NA	.XXX± .NA		
HarmonicGuard Passive, 480V Contactor P1connect/heater, XFMR To AU/BI		DRAWN BY: JRN SCALE: NA	DATE: 12/16/21 SIZE: C
PARTIAL ± NA FULL ± NA		DRAWN BY: JRN SCALE: NA	DATE: 12/16/21 SIZE: C