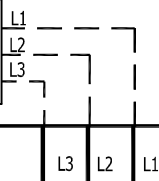


480V.
60 HZ.
LINE

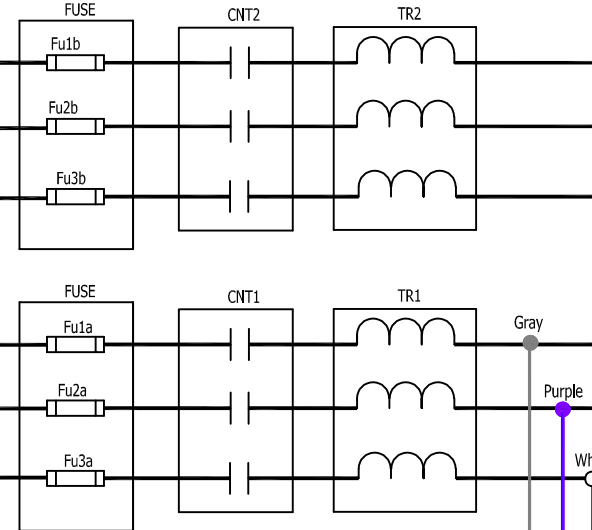
FUSED DISCONNECT
OR CIRCUIT BREAKER
(CUSTOMER SUPPLIED)



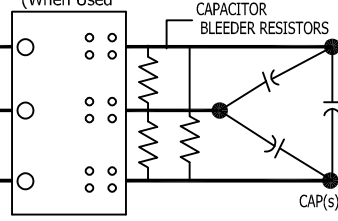
CUSTOMER CONNECTIONS

75 HP AND BELOW : USE MINIMUM 60°C COPPER WIRE
ABOVE 75 HP : USE MINIMUM 75°C COPPER WIRE

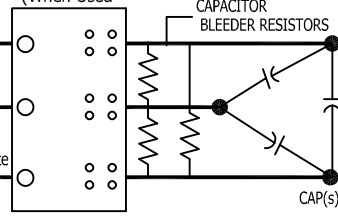
FACTORY POWER CONNECTIONS



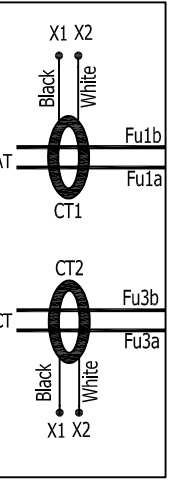
Location of Distribution block (When Used)



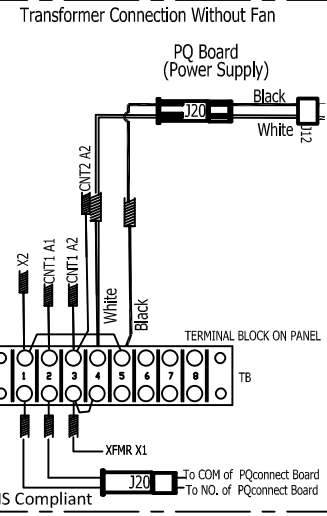
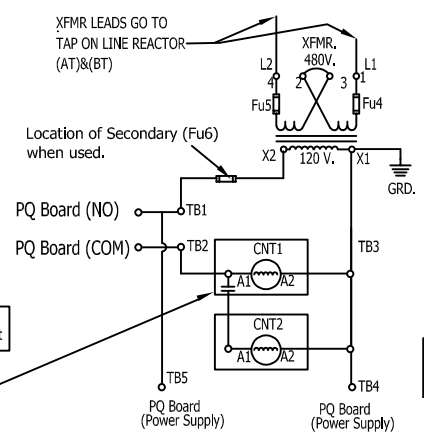
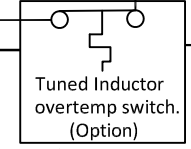
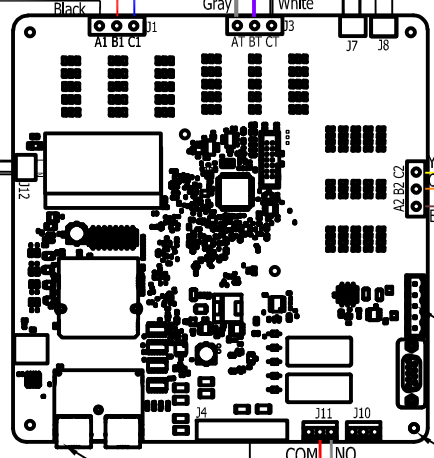
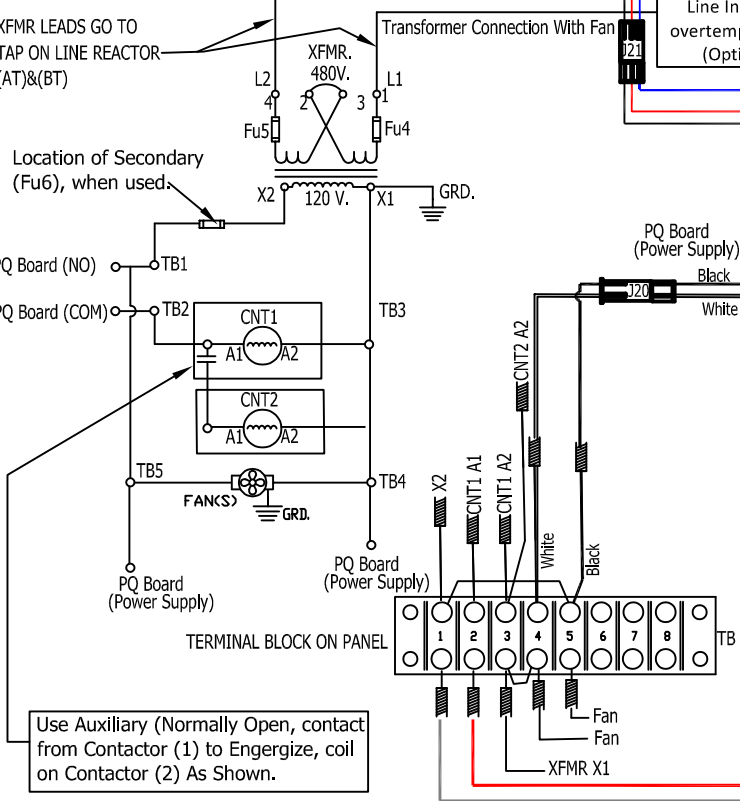
Location of Distribution block (When Used)



CT Locations



CONTROL CONNECTIONS



Use Auxiliary (Normally Open, contact from Contactor (1) to Energize, coil on Contactor (2) As Shown.

TCL, LLC CLAIMS PROPRIETARY RIGHTS IN THE MATERIAL HEREIN DISCLOSED. IT IS SUPPLIED WITHOUT PREJUDICE TO ANY PATENT RIGHTS OF TCL AND MAY NOT BE REPRODUCED OR USED TO MANUFACTURE ANYTHING SHOWN THEREIN WITHOUT WRITTEN PERMISSION FROM TCL.

NO	REVISION	DATE	BY	TOLERANCES UNLESS AS NOTED:
C	6024, schematic updated	8/23/22	GJS	.XX ± NA
B	Add TS Option to LR	10/13/21	DW	.XXX ± NA
A	4684, Wire Colors Updated	3/27/19	DW	FRACTIONAL ± NA
NO				ANGULAR ± NA

TCL V132 N10611 Grant Drive Germantown, VI 53022 © TCL, 2021

HarmonicGuard Passive, 480V, Two Trap Circuits Contactor/PQconnect

DATE: 6/1/19
SCALE: N/A
SHEET: 29597-PQ4 SHT.1 of 1