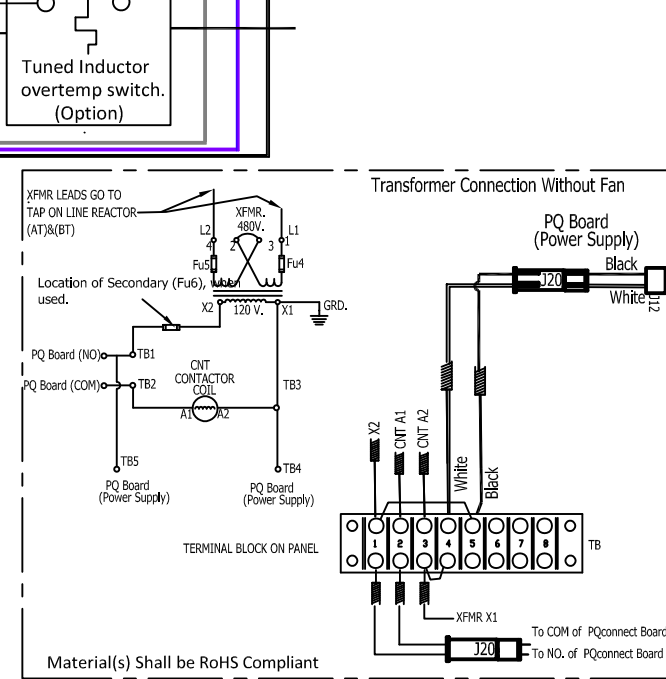
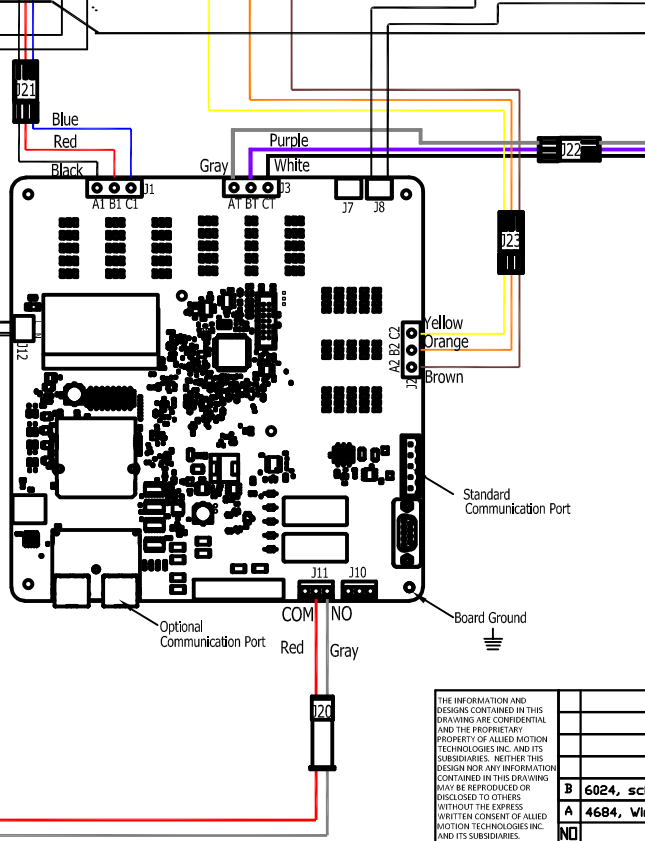
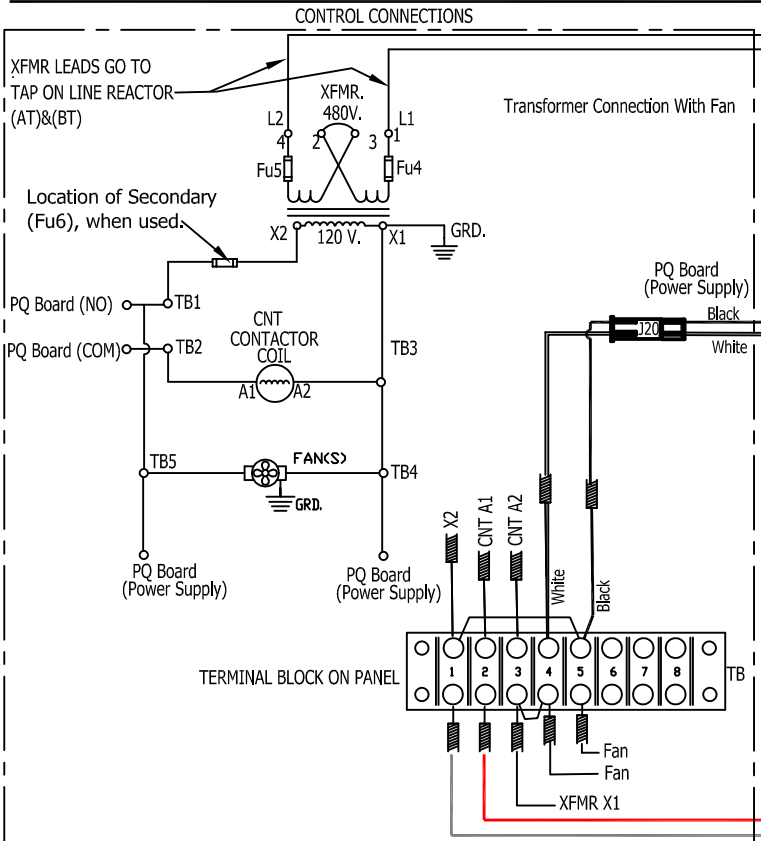
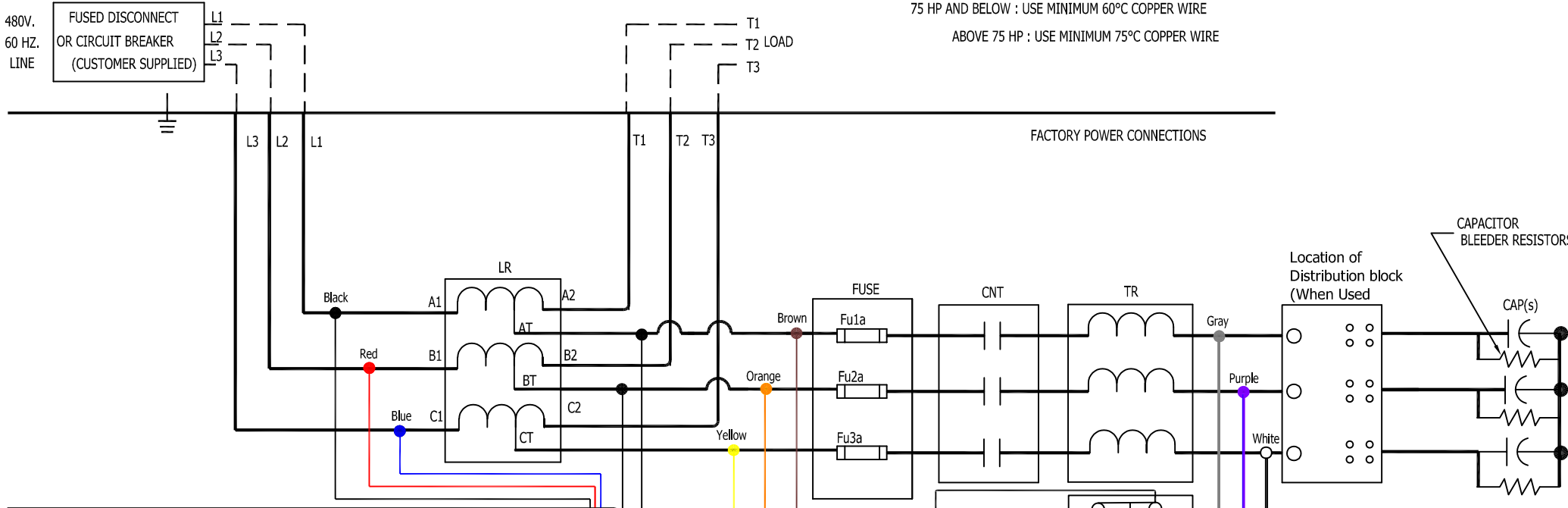


CUSTOMER CONNECTIONS

75 HP AND BELOW : USE MINIMUM 60°C COPPER WIRE
 ABOVE 75 HP : USE MINIMUM 75°C COPPER WIRE



THE INFORMATION AND DESIGNS CONTAINED IN THIS DRAWING ARE CONFIDENTIAL AND THE PROPRIETARY PROPERTY OF ALLIED MOTION TECHNOLOGIES INC. AND ITS SUBSIDIARIES. NEITHER THIS DESIGN NOR ANY INFORMATION CONTAINED IN THIS DRAWING MAY BE REPRODUCED OR DISCLOSED TO OTHERS WITHOUT THE EXPRESS WRITTEN CONSENT OF ALLIED MOTION TECHNOLOGIES INC. AND ITS SUBSIDIARIES.

NO	REVISION	DATE	BY	TOLERANCES EXCEPT AS NOTED
B	6024, schematic update	8/23/22	GJS	FRAGMENTAL ± NA
A	4684, Wire Colors Updated	3/27/19	DW	REGULAR ± NA
NO				± NA

TCL W132 N10611 Grant Drive
 Germantown, WI 53022
 © TCL, 2021

**HarmonicGuard Passive, 3HP to 10HP
 480V Contactor/PQconnect**

DATE BY: DSW 6/2/18
 SCALE: NA SIZE: C
 PNC NO: 29597-PQ2
 SHT. 1 OF 1