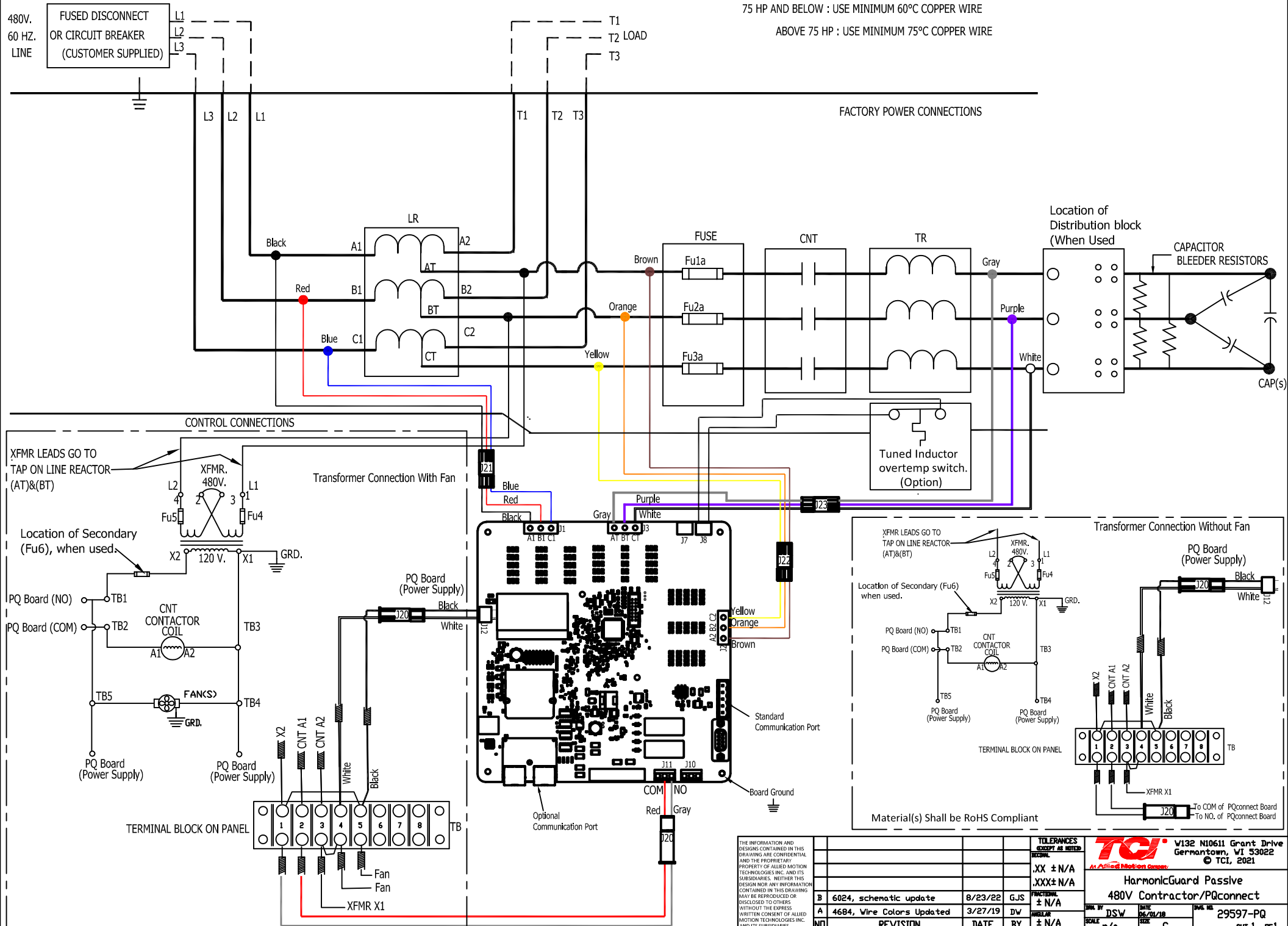


CUSTOMER CONNECTIONS

75 HP AND BELOW : USE MINIMUM 60°C COPPER WIRE

ABOVE 75 HP : USE MINIMUM 75°C COPPER WIRE



480V.  
60 HZ.  
LINE

FUSED DISCONNECT  
OR CIRCUIT BREAKER  
(CUSTOMER SUPPLIED)

L1  
L2  
L3

T1  
T2 LOAD  
T3

FACTORY POWER CONNECTIONS

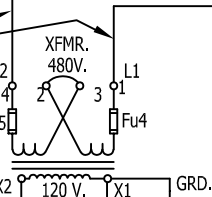
Location of  
Distribution block  
(When Used)

CAPACITOR  
BLEEDER RESISTORS

CAP(s)

CONTROL CONNECTIONS

XFMR LEADS GO TO  
TAP ON LINE REACTOR  
(AT)&(BT)



Transformer Connection With Fan

Location of Secondary  
(Fu6), when used.

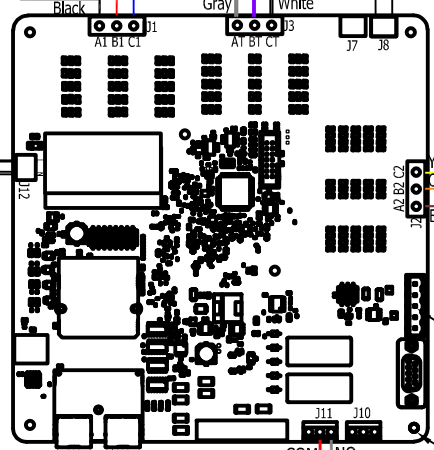
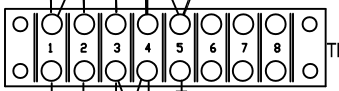
PQ Board (NO)

PQ Board (COM)

PQ Board (Power Supply)

PQ Board (Power Supply)

TERMINAL BLOCK ON PANEL



J21

J22

J20

J10

J11

J12

J13

J14

J15

J16

J17

J18

J19

J20

J21

J22

J23

J24

J25

J26

J27

J28

J29

J30

J31

J32

J33

J34

J35

J36

J37

J38

J39

J40

J41

J42

J43

J44

J45

J46

J47

J48

J49

J50

J51

J52

J53

J54

J55

J56

J57

J58

J59

J60

J61

J62

J63

J64

J65

J66

J67

J68

J69

J70

J71

J72

J73

J74

J75

J76

J77

J78

J79

J80

J81

J82

J83

J84

J85

J86

J87

J88

J89

J90

J91

J92

J93

J94

J95

J96

J97

J98

J99

J100

J101

J102

J103

J104

J105

J106

J107

J108

J109

J110

J111

J112

J113

J114

J115

J116

J117

J118

J119

J120

J121

J122

J123

J124

J125

J126

J127

J128

J129

J130

J131

J132

J133

J134

J135

J136

J137

J138

J139

J140

J141

J142

J143

J144

J145

J146

J147

J148

J149

J150

J151

J152

J153

J154

J155

J156

J157

J158

J159

J160

J161

J162

J163

J164

J165

J166

J167

J168

J169

J170

J171

J172

J173

J174

J175

J176

J177

J178

J179

J180

J181

J182

J183

J184

J185

J186

J187

J188

J189

J190

J191

J192

J193

J194

J195

J196

J197

J198

J199

J200

J201

J202

J203

J204

J205

J206

J207

J208

J209

J210

J211

J212

J213

J214

J215

J216

J217

J218

J219

J220

J221

J222

J223

J224

J225

J226

J227

J228

J229

J230

J231

J232

J233

J234

J235

J236

J237

J238

J239

J240

J241

J242

J243

J244

J245

J246

J247

J248

J249

J250

J251

J252

J253

J254

J255

J256

J257

J258

J259

J260

J261

J262

J263

J264

J265

J266

J267

J268

J269

J270

J271

J272

J273

J274</