

600V.
60 HZ.
LINE

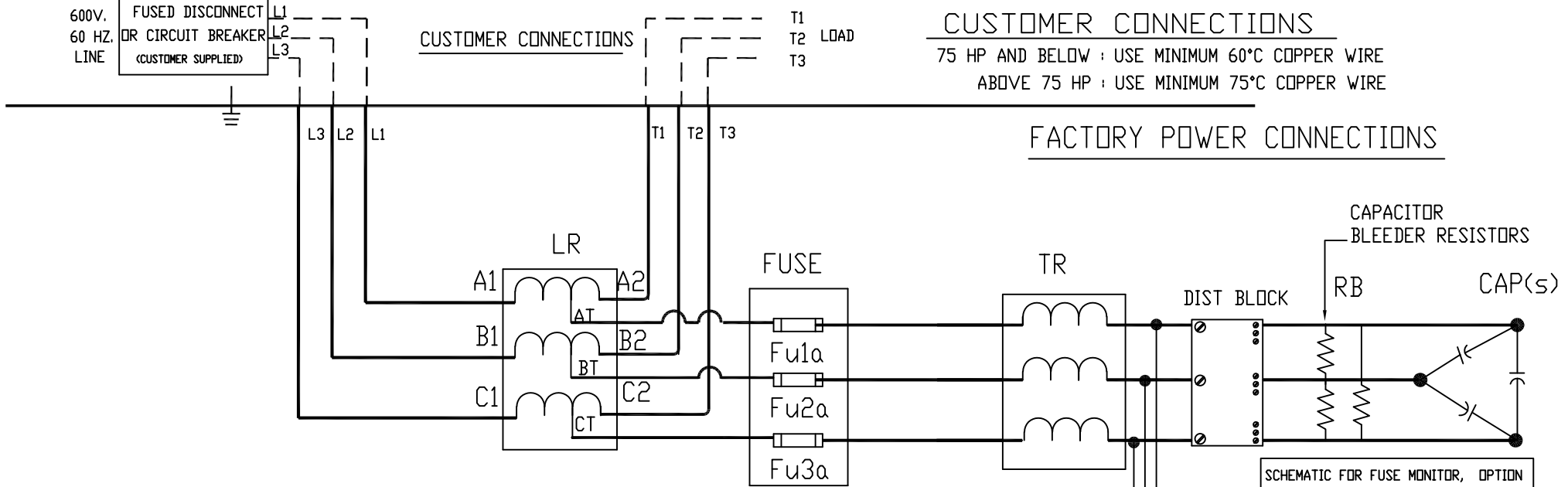
FUSED DISCONNECT
OR CIRCUIT BREAKER
(CUSTOMER SUPPLIED)

CUSTOMER CONNECTIONS

CUSTOMER CONNECTIONS

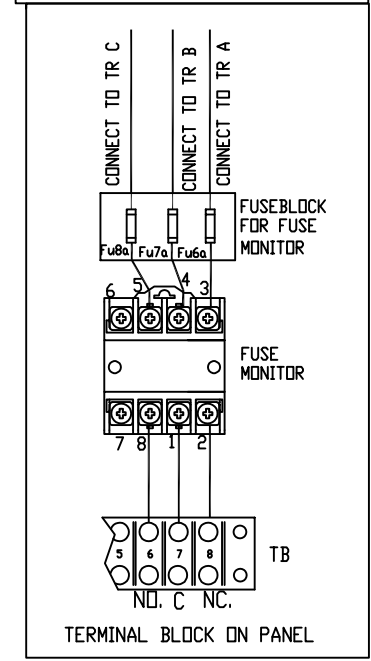
75 HP AND BELOW : USE MINIMUM 60°C COPPER WIRE
ABOVE 75 HP : USE MINIMUM 75°C COPPER WIRE

FACTORY POWER CONNECTIONS

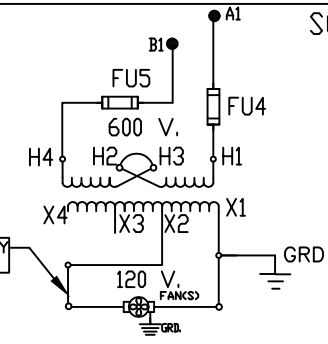


CONNECTIONS FOR
FUSE MONITOR
OPTION

SCHEMATIC FOR FUSE MONITOR, OPTION



SCHEMATIC WHEN FAN IS INCLUDED.
CONTROL CONNECTIONS



LOCATION OF SECONDARY
FUSING, IF PROVIDED.

<p>TCL, LLC CLAIMS PROPRIETARY RIGHTS IN THE MATERIAL HEREIN DISCLOSED. IT IS SUPPLIED WITHOUT PREJUDICE TO ANY PATENT RIGHTS OF TCL AND MAY NOT BE REPRODUCED OR USED TO MANUFACTURE ANYTHING SHOWN THEREIN WITHOUT WRITTEN PERMISSION FROM TCL.</p>	NO	REVISION	DATE	BY	TOLERANCES (EXCEPT AS NOTED)	<p>W132 N10611 GRANT DRIVE GERMANTOWN, WI 53022</p> <p>HARMONICGUARD PASSIVE 600V SCHEMATIC 200HP TO 900HP, OPEN 200HP TO 900HP, TYPE1</p>
					.XX ± NA	
					.XXX ± NA	
					FRACTIONAL ± NA	
					ANGULAR ± NA	
					<p>DRN BY DSW DATE 3/17/15 DWG. NO. 29474-3</p> <p>SCALE NONE SIZE C</p>	