

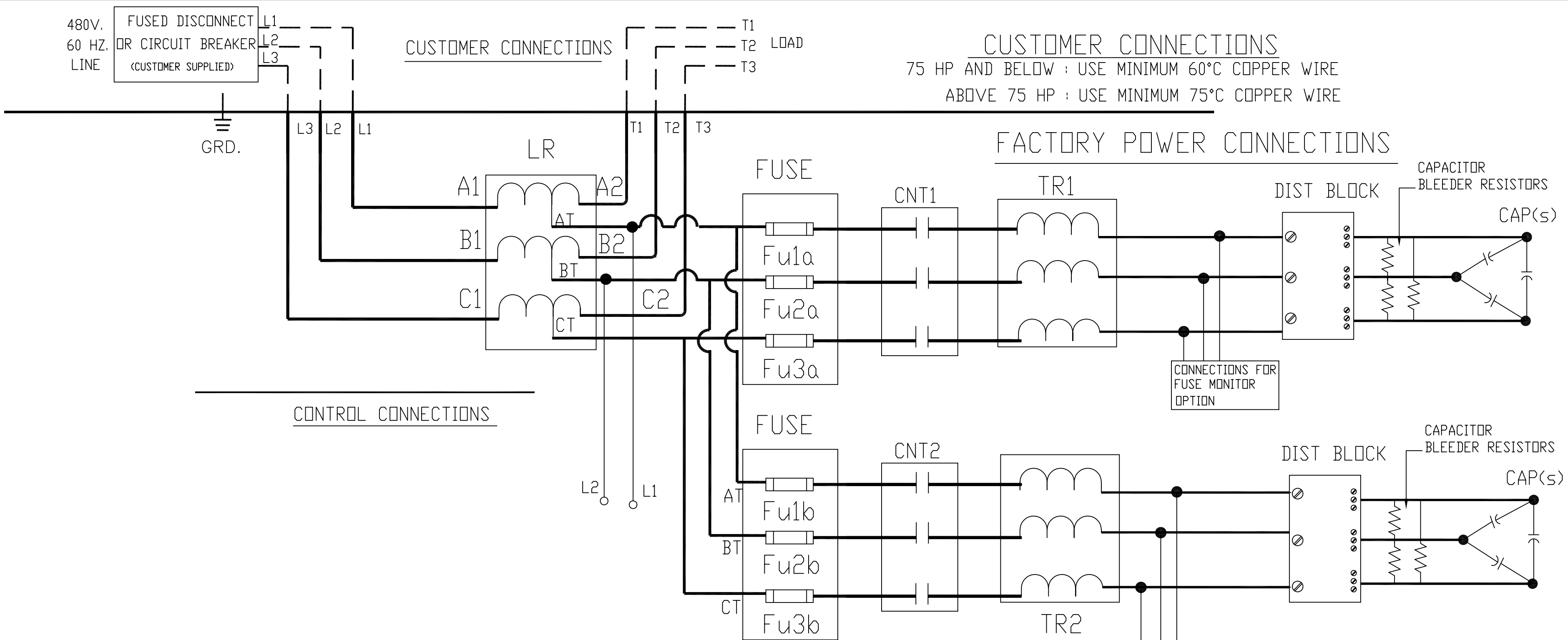
480V.
60 HZ.
LINE

FUSED DISCONNECT
OR CIRCUIT BREAKER
(CUSTOMER SUPPLIED)

CUSTOMER CONNECTIONS
L1 L2 L3
T1 T2 T3 LOAD

CUSTOMER CONNECTIONS
75 HP AND BELOW : USE MINIMUM 60°C COPPER WIRE
ABOVE 75 HP : USE MINIMUM 75°C COPPER WIRE

FACTORY POWER CONNECTIONS

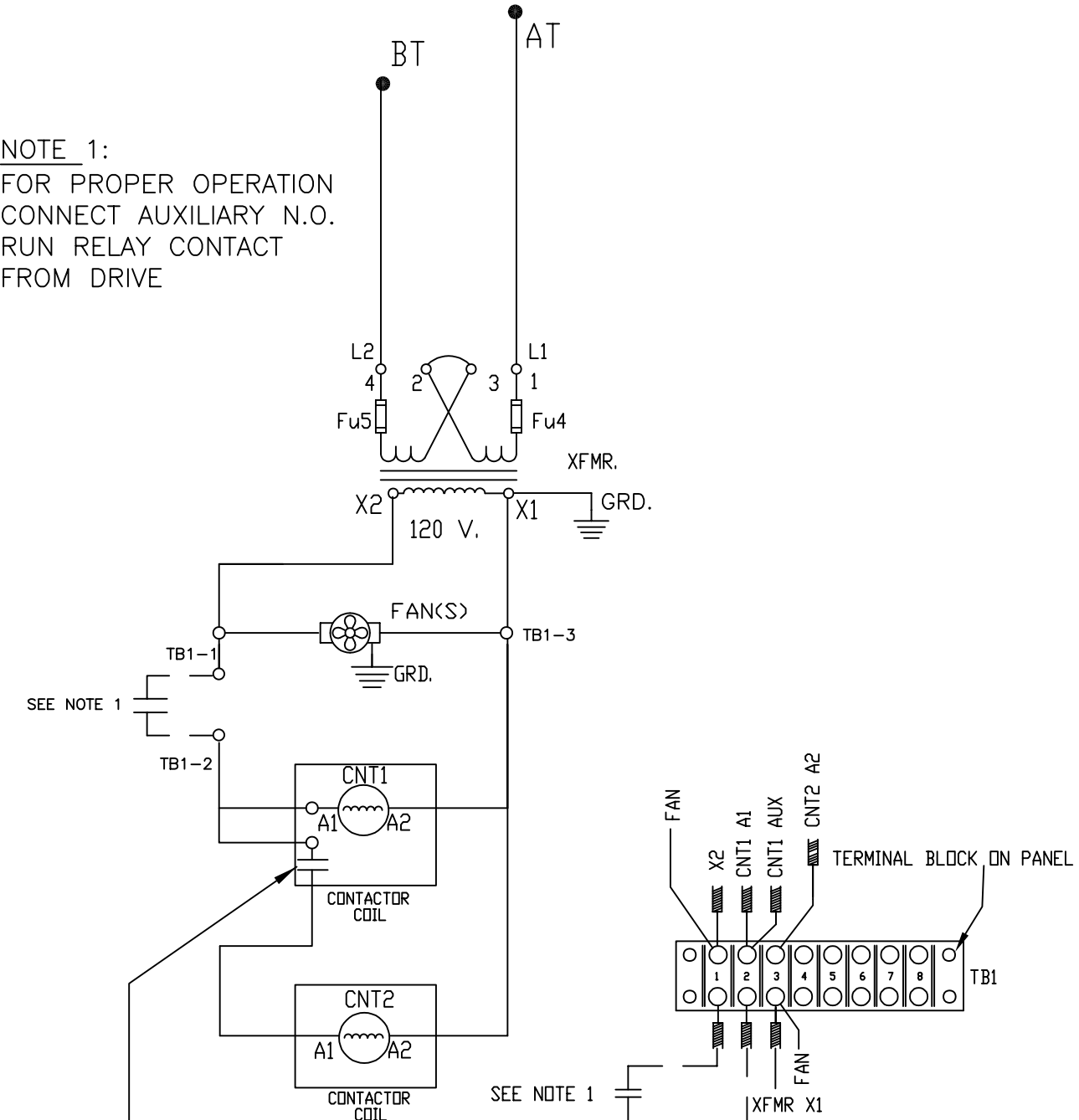


CONTROL CONNECTIONS

XFMR WITHOUT SECONDARY FUSING

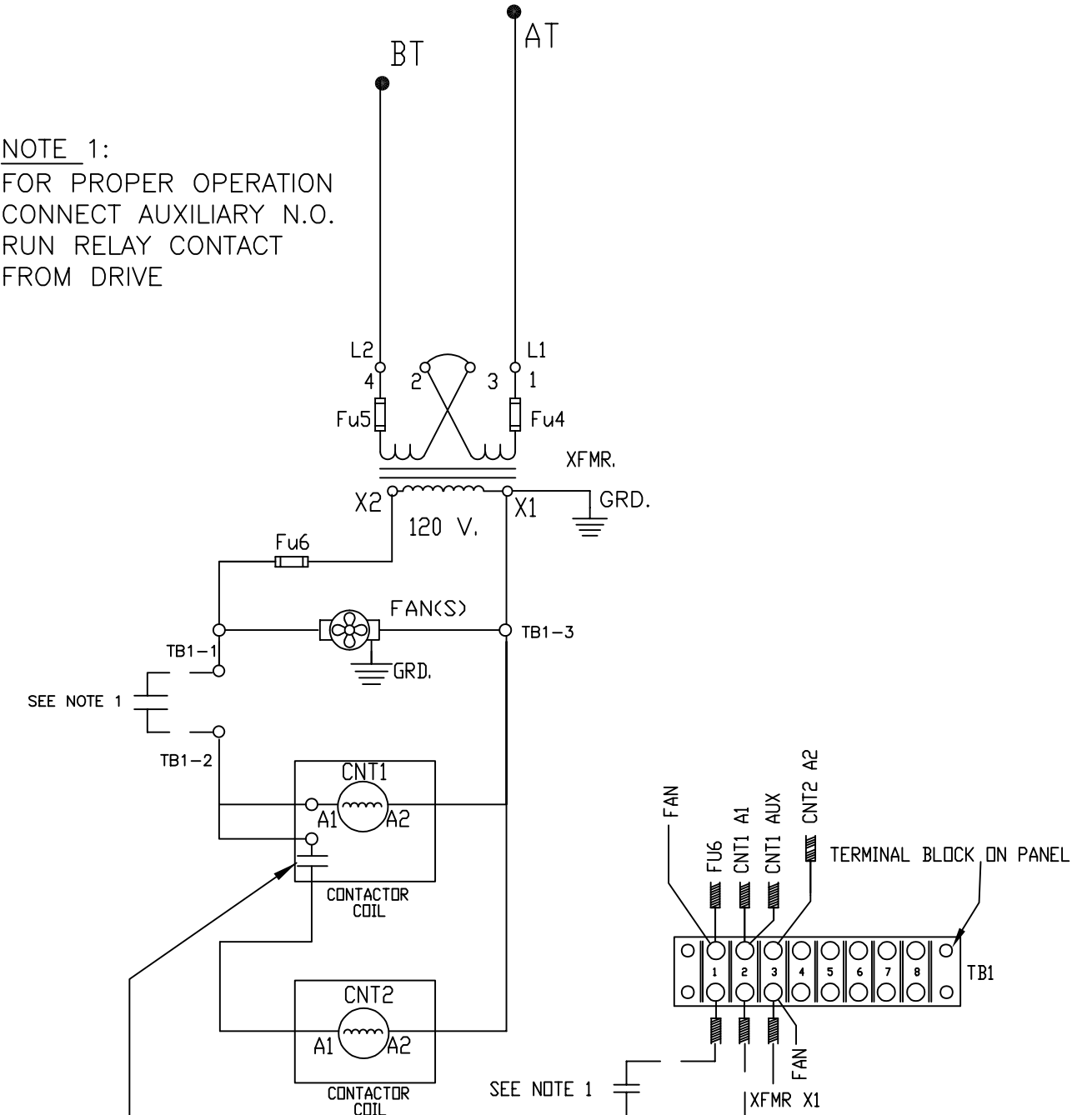
XFMR WITH SECONDARY FUSING

NOTE 1:
FOR PROPER OPERATION
CONNECT AUXILIARY N.O.
RUN RELAY CONTACT
FROM DRIVE



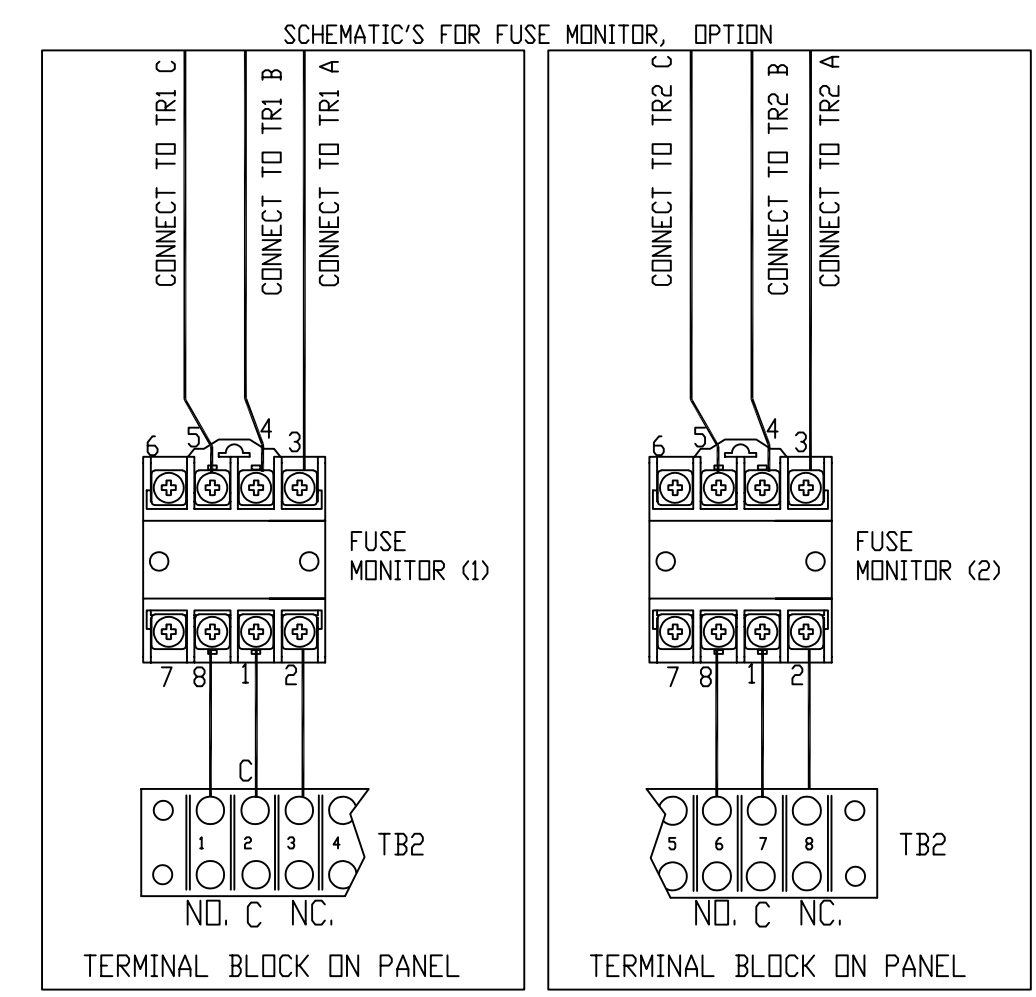
USE AUXILIARY (NORMALLY OPEN, CONTACT)
FROM CONTACTOR (1)
TO ENGERGIZE, COIL ON CONTACTOR (2)
AS SHOWN.

NOTE 1:
FOR PROPER OPERATION
CONNECT AUXILIARY N.O.
RUN RELAY CONTACT
FROM DRIVE



USE AUXILIARY (NORMALLY OPEN, CONTACT)
FROM CONTACTOR (1)
TO ENGERGIZE, COIL ON CONTACTOR (2)
AS SHOWN.

CONNECTIONS FOR
FUSE MONITOR
OPTION



TOL. LLC CLAIMS PROPRIETARY RIGHTS IN THE MATERIAL HEREIN DISCLOSED. IT IS SUPPLIED WITHOUT PREJUDICE TO ANY PATENT RIGHTS OF TCI AND MAY NOT BE REPRODUCED OR USED TO MANUFACTURE ANYTHING SHOWN THEREIN WITHOUT WRITTEN PERMISSION FROM TCI.			TOLERANCES (EXCEPT AS NOTED)		TCD® W132 N10611 Grant Drive Germantown, WI 53022	
I	6100 AUX CONNECTION CLEARER	11/15/22	JRN	DECIMAL	HARMONICGUARD PASSIVE 480V SCHEMATIC	
H	REMOVE 700HP	4/24/18	DSW	.XX ± N/A	900HP, 1000HP	
G	REMOVE FUSE MONITOR FUSING	4/12/17	DSW	.XXX ± N/A	DRN BY DSW DATE 11/11/13 DWG NO. 28697-6	
F	3559, ADD AUX CONNECTION FOR CNT 2	3/31/16	DSW	FRACTIONAL ± N/A	SCALE NONE SIZE 11/11/13	
NO	REVISION	DATE	BY	± N/A	SHT. 1 OF 1	