

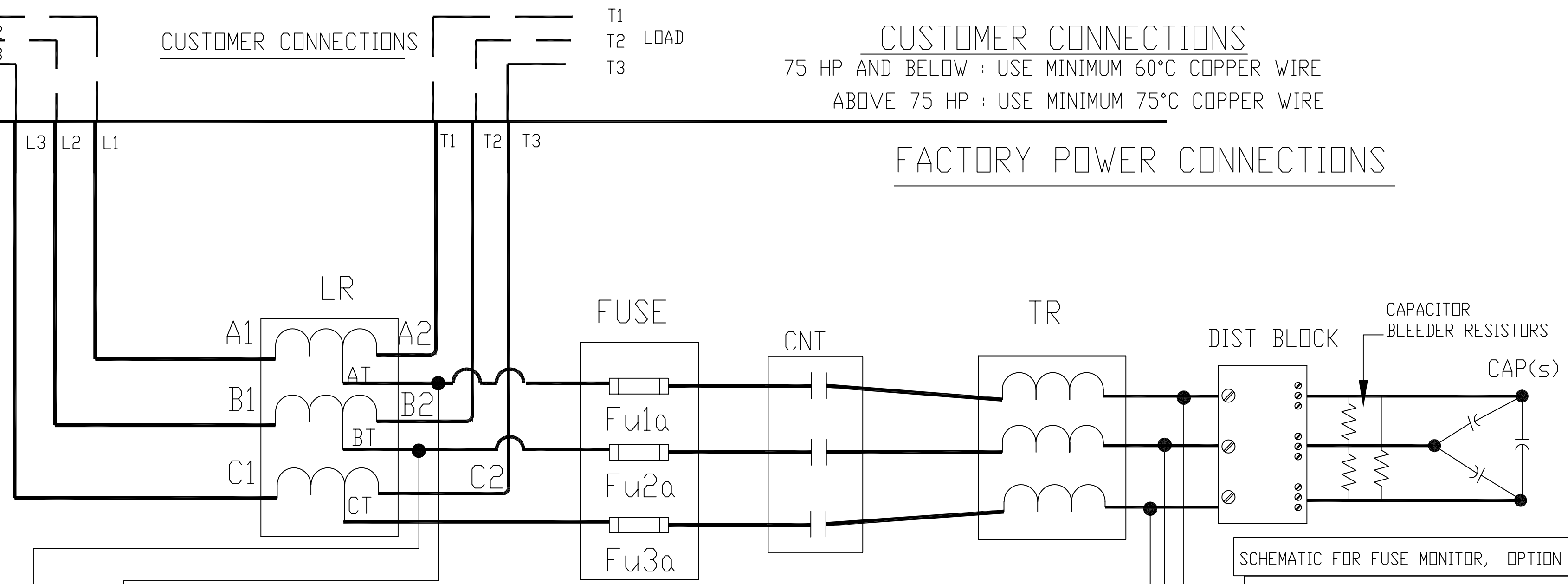
480V.
60 HZ.
LINE

FUSED DISCONNECT
OR CIRCUIT BREAKER
(CUSTOMER SUPPLIED)

CUSTOMER CONNECTIONS

CUSTOMER CONNECTIONS
75 HP AND BELOW : USE MINIMUM 60°C COPPER WIRE
ABOVE 75 HP : USE MINIMUM 75°C COPPER WIRE

FACTORY POWER CONNECTIONS

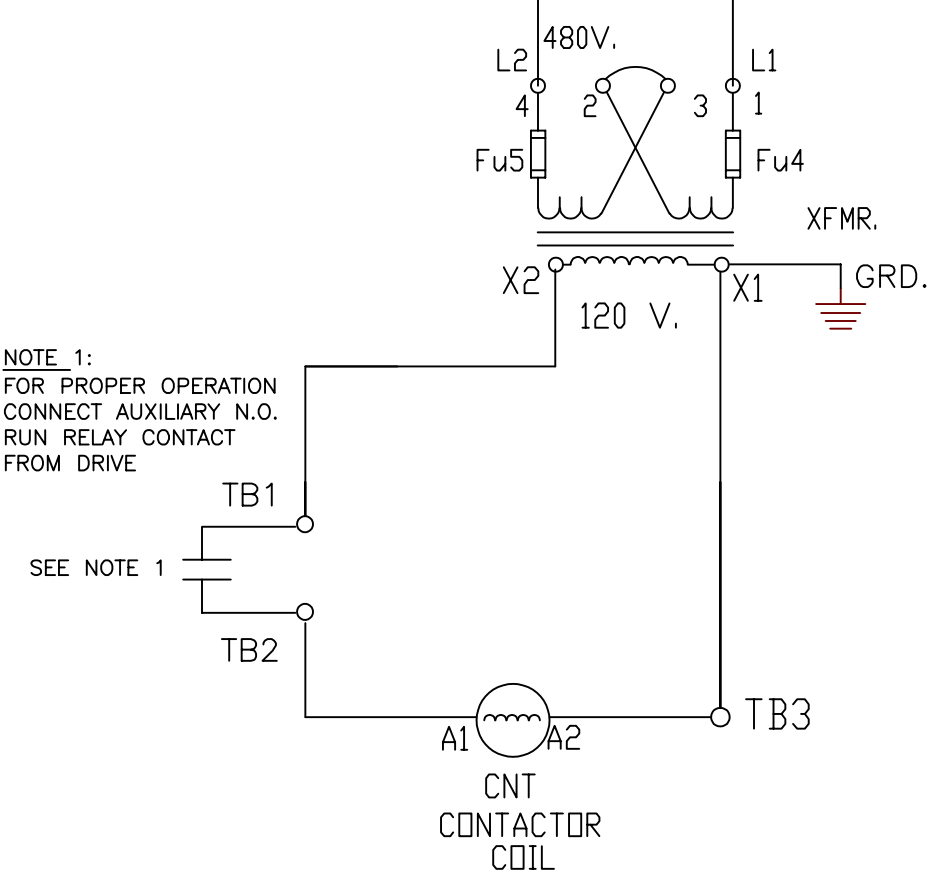


CONTROL CONNECTIONS

CONNECTIONS FOR
FUSE MONITOR
OPTION

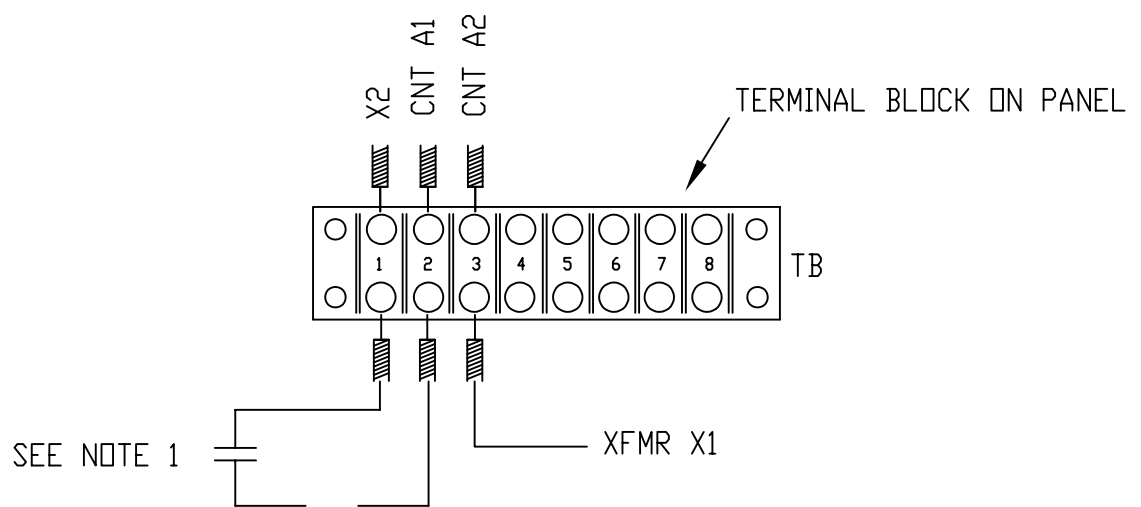
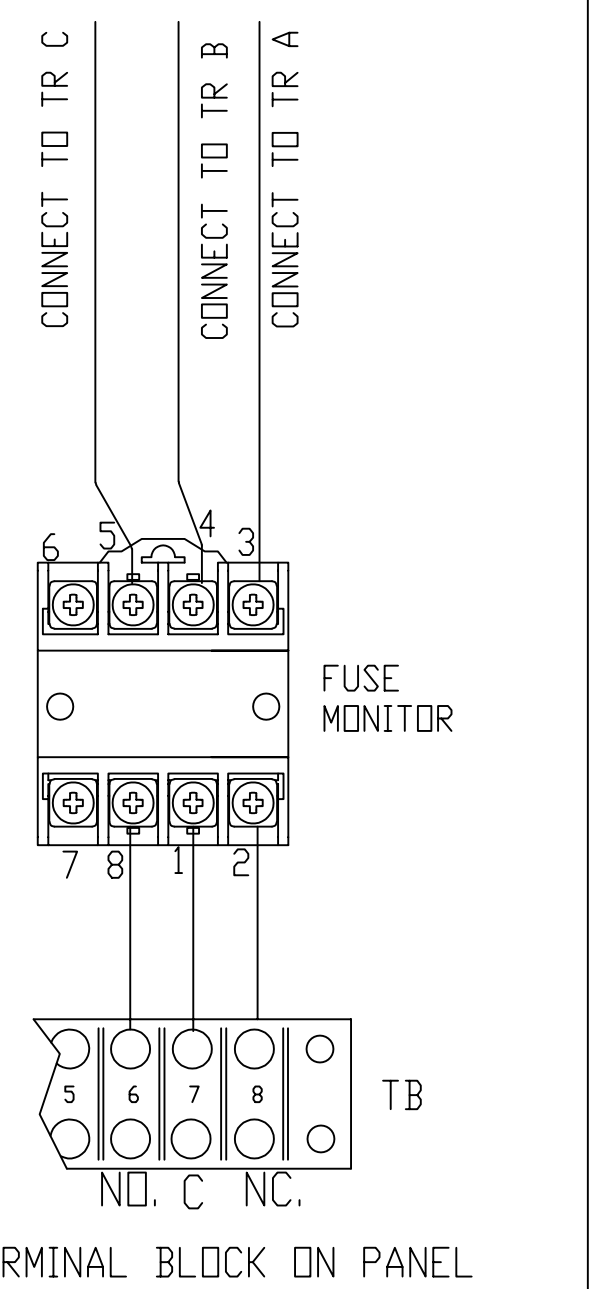
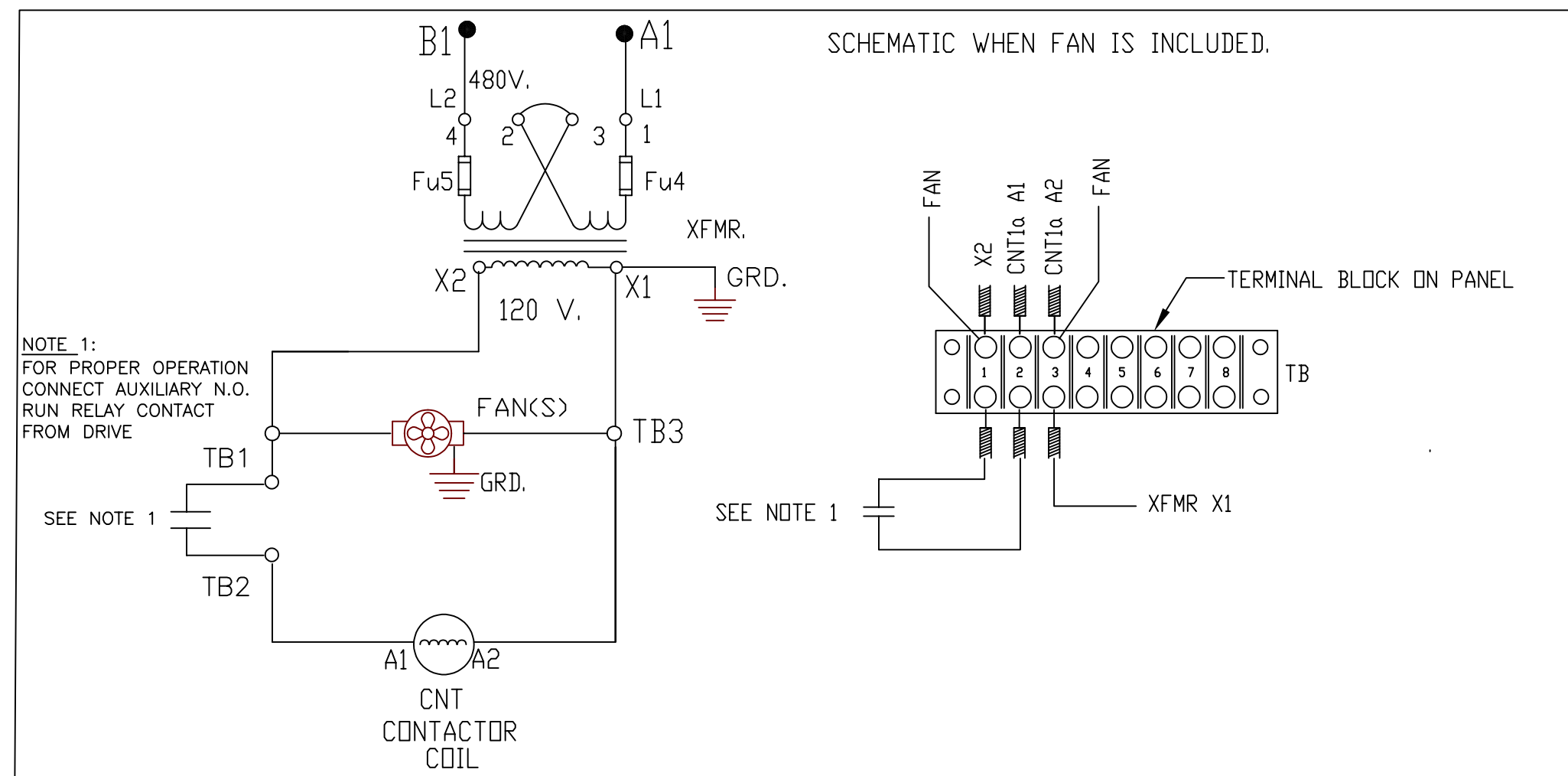
SCHEMATIC FOR FUSE MONITOR, OPTION

NOTE 1:
FOR PROPER OPERATION
CONNECT AUXILIARY N.O.
RUN RELAY CONTACT
FROM DRIVE



SCHEMATIC WHEN FAN IS INCLUDED.

NOTE 1:
FOR PROPER OPERATION
CONNECT AUXILIARY N.O.
RUN RELAY CONTACT
FROM DRIVE



TCI, LLC CLAIMS PROPRIETARY RIGHTS IN THE MATERIAL HEREIN DISCLOSED. IT IS SUPPLIED WITHOUT PREJUDICE TO ANY PATENT RIGHTS OF TCI AND MAY NOT BE REPRODUCED OR USED TO MANUFACTURE ANYTHING SHOWN THEREIN WITHOUT WRITTEN PERMISSION FROM TCI.				TOLERANCES (EXCEPT AS NOTED) DECIMAL	W132 N10611 Grant Drive Germantown, WI 53022 © TCI, 2024 Harmonicguard Passive 480V Schematic, Contactor Version 250HP to 400HP Open and Enclosed
				.XX ± N/A	
				.XXX ± N/A	
				FRACTIONAL ± N/A	
	G 6582 Show TB3	2/22/24	JRN	FRACTIONAL ± N/A	DRN BY DSW DATE 9/12/2013 DVG. NO. 28697-1 SCALE NONE SIZE SHT.1 of 1
	F And Enclosed to Schematic	8/14/18	DSW	ANGULAR ± N/A	
NO	REVISION	DATE	BY	± N/A	