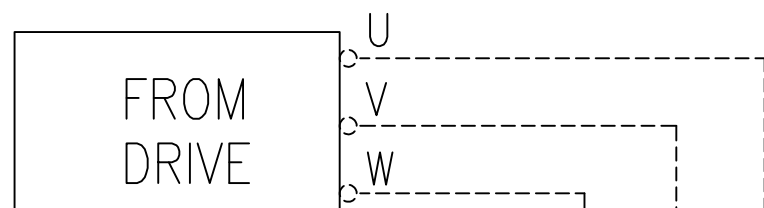


600 VOLTS  
80Hz



CUSTOMER CONNECTIONS  
INTO SINEWAVE FILTER

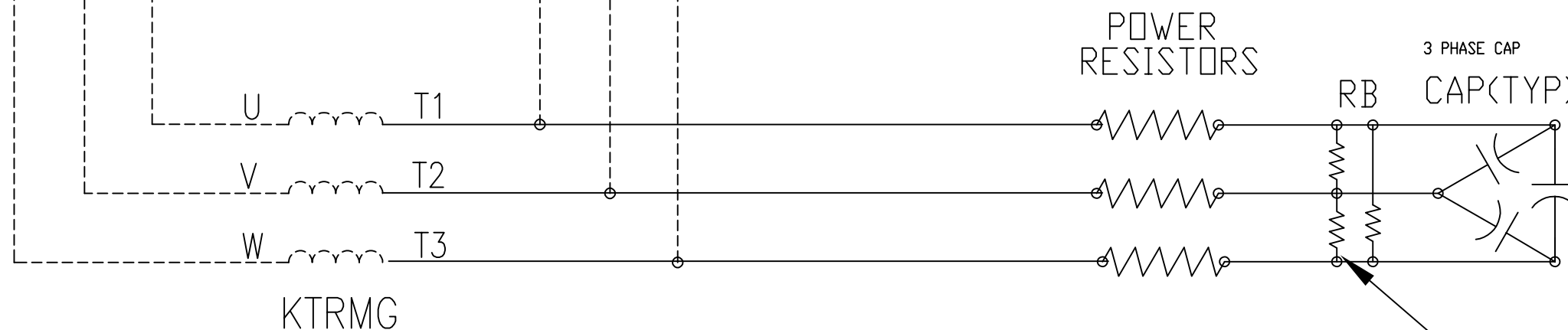
CUSTOMER  
CONNECTIONS

USE COPPER WIRE  
60°C MIN <100 A.  
75°C MIN ≥100 A.

T1  
T2  
T3  
TO  
LOAD

GRD

POWER SCHEMATIC



BLEEDER RESISTORS  
ON CAPACITORS

CUSTOMER IS RESPONSIBLE FOR INSTALLATION  
TO MEET ALL NATIONAL AND LOCAL ELECTRICAL CODES

				TOLERANCES (EXCEPT AS NOTED)	W132 N10611 Grant Drive Germantown, WI 53022  KMG SCHEMATIC DIAGRAM 600 V. SINE WAVE FILTER
				DECIMAL	
				,XX ± NA	
				,XXX ± NA	
				FRACTIONAL ± NA	
				ANGULAR ± NA	DRN. BY DSW
NO	REVISION	DATE	BY		DATE 1/23/09
					DWG. NO. B 26912
					SCALE 1/8"=1"
					APRVD.
					SHT. 1 OF 1