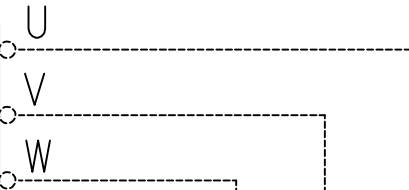
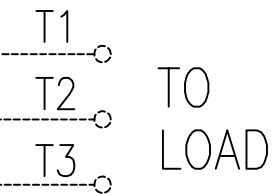


480 VOLTS
80Hz MAX
FROM DRIVE

FUSED DISCONNECT
OR CIRCUIT BREAKER
(CUSTOMER SUPPLIED)



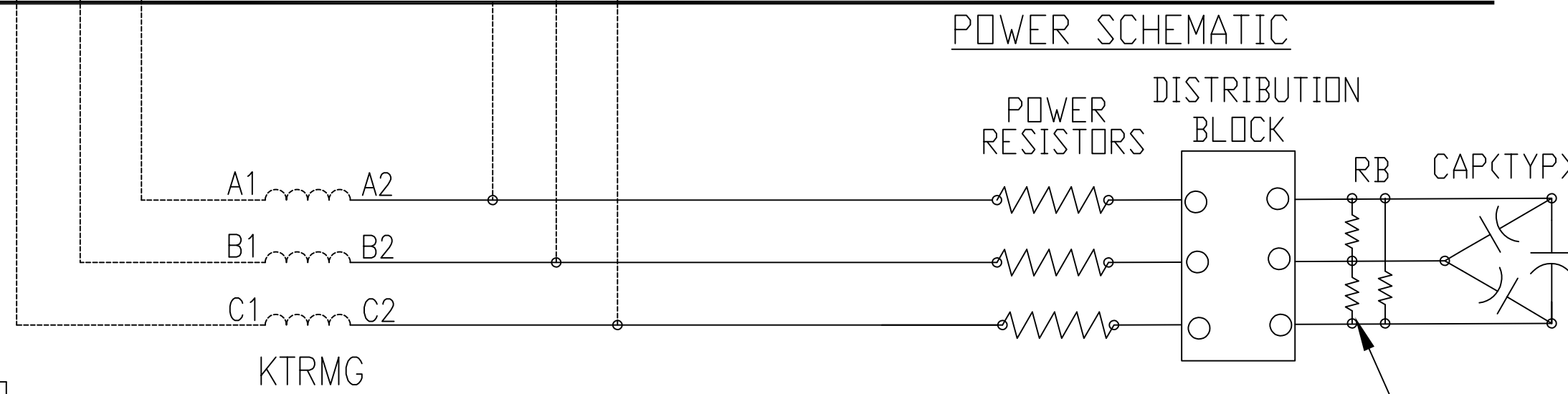
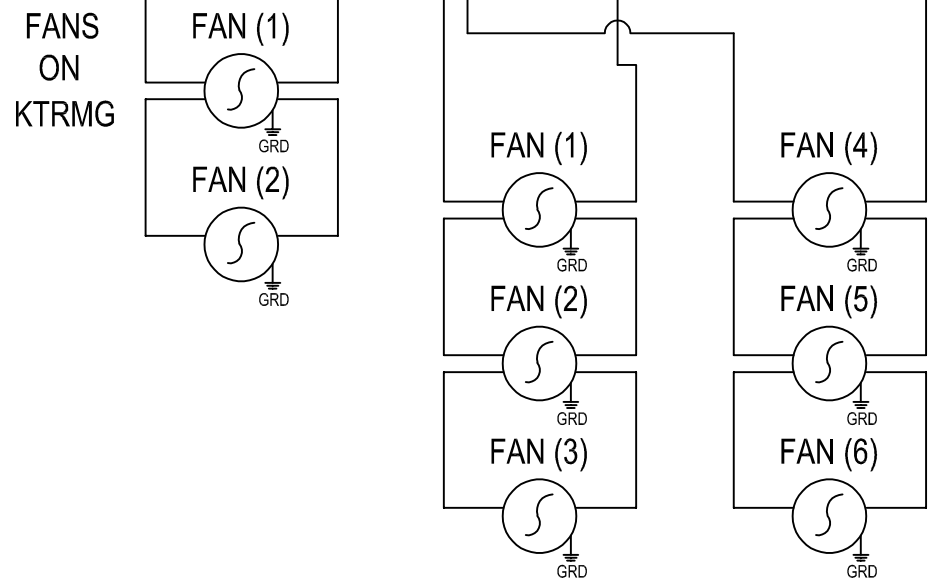
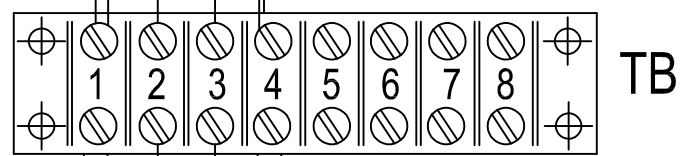
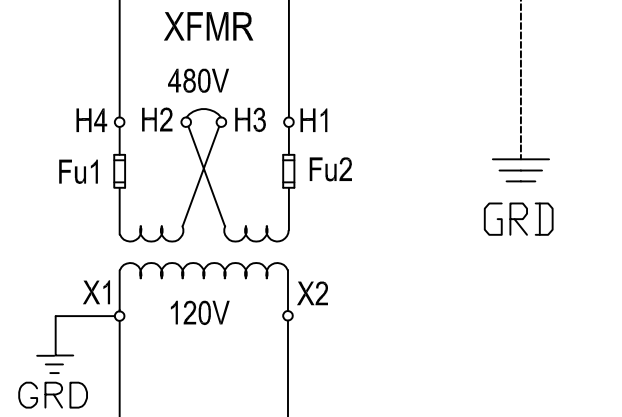
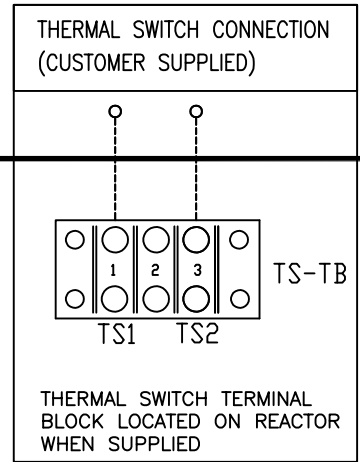
CUSTOMER CONNECTIONS
INTO SINEWAVE FILTER



CUSTOMER
CONNECTIONS

USE COPPER WIRE
60°C MIN <100 A.
75°C MIN >100 A.

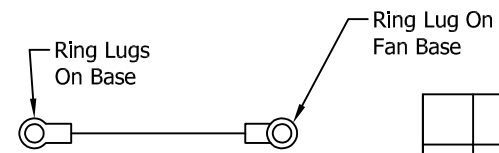
Customer To Supply
480V, Single Phase
Power For fans



DO NOT:
Connect Transformer
To VFD Output Or Any
Filter Terminals

BLEEDER RESISTORS
ON CAPACITORS

CUSTOMER IS RESPONSIBLE FOR INSTALLATION
TO MEET ALL NATIONAL AND LOCAL ELECTRICAL CODES



TOLERANCES (EXCEPT AS NOTED)	
DECIMAL	.XX ± .03 .XXX ± .010
FRACTIONAL	± 1/16
ANGULAR	± 1/2°
REVISION	DATE BY
NO	5499 A1/A1 FLIPPED 01/28/21 JRN

TCI® W132 N10611 Grant Drive
Germantown, WI 53022

KMG SCHEMATIC DIAGRAM, 480V
FAN TRAY AND RESISTOR FANS

DRN. BY JRN DATE 06/25/20 DWG. NO. 26736-4A
SCALE 1/8"=1" APRVD. B SHT. 1 OF 1