

DO NOT:
Connect Transformer
To VFD Output Or Any
Filter Terminals

600 VOLTS
80Hz MAX

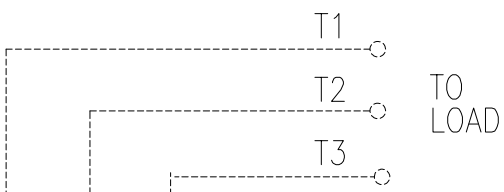
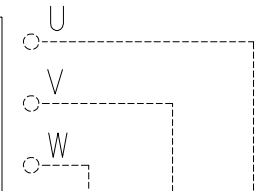
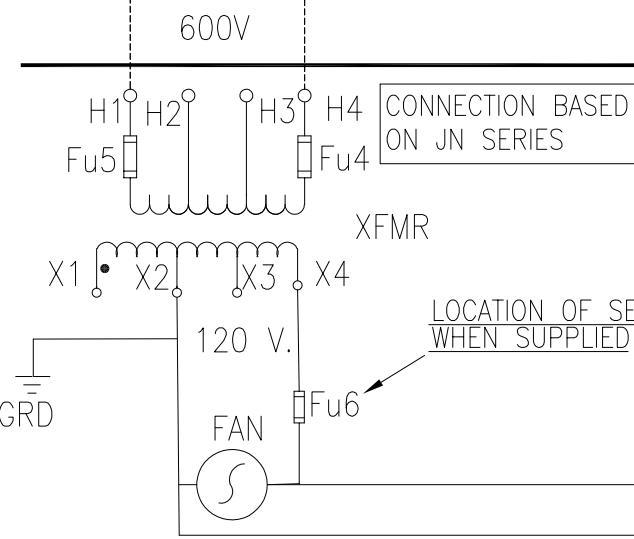
VFD WITH SOLID-STATE MOTOR
OVERLOAD PROTECTION FUNCTION OR
SEPARATE MOTOR OVERLOAD DEVICE
(CUSTOMER SUPPLIED)

CUSTOMER CONNECTIONS
INTO SINEWAVE FILTER

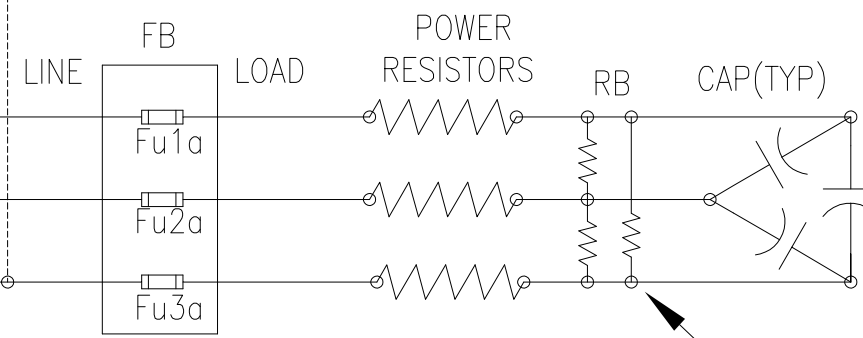
CUSTOMER
CONNECTIONS

USE COPPER WIRE
60°C MIN <100 A.
75°C MIN >100 A.

Customer To Supply
600V
Power For fans/PQ Board



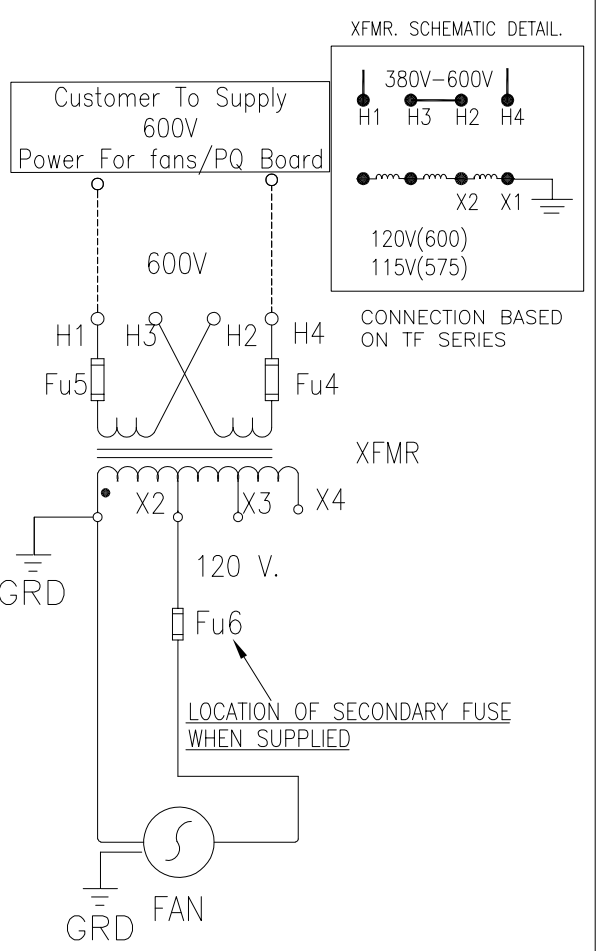
POWER SCHEMATIC



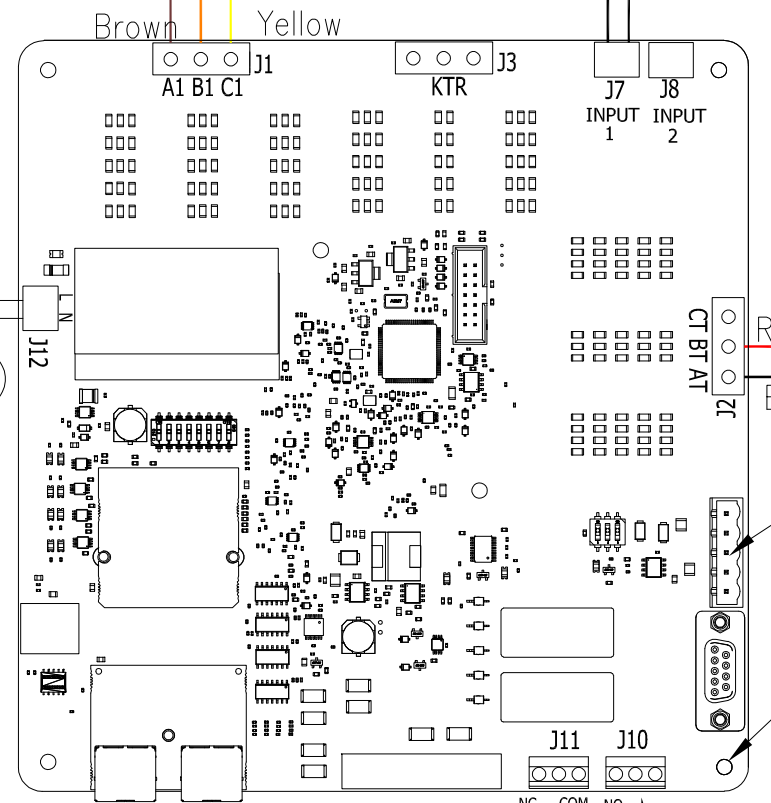
BLEEDER RESISTORS
ON CAPACITORS

CONTROL SCHEMATIC

ALTERNATE TRANSFORMER CONNECTION



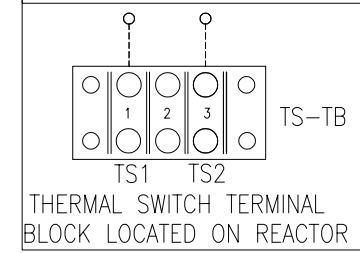
PQ Board
(Power Supply)



Modbus RTU RS485
Communication Port

Board Ground


THERMAL SWITCH CONNECTION



Customer Connections
14-28 AWG.

Output Relay 1
Output Relay 2

CUSTOMER IS RESPONSIBLE FOR INSTALLATION
TO MEET ALL NATIONAL AND LOCAL ELECTRICAL CODES

THE INFORMATION AND DESIGNS CONTAINED IN THIS DRAWING ARE CONFIDENTIAL AND THE PROPRIETARY PROPERTY OF ALLIED MOTION TECHNOLOGIES INC. AND ITS SUBSIDIARIES. NEITHER THIS DESIGN NOR ANY INFORMATION CONTAINED IN THIS DRAWING MAY BE REPRODUCED OR DISCLOSED TO OTHERS WITHOUT THE EXPRESS WRITTEN CONSENT OF ALLIED MOTION TECHNOLOGIES INC. AND ITS SUBSIDIARIES.				TOLERANCES (EXCEPT AS NOTED)		 W132N10611 Grant Drive Germantown, WI 53022 © 2022 TCI, LLC	
				DECIMAL		PQconnect, SineWave Filter, 600V 65 Amps To 750 Amps	
				FRACTIONAL		DRN BY: DSW DATE: 6/30/2020 SCALE: N/A APRVD:	
				ANGULAR		24281-23P SIZE B SHT.1 OF 1	
NO		REVISION		DATE		BY	
A		5850, Update Customer Supplied Wording		2/2/2022		DSW	