

DO NOT:
Connect Transformer
To VFD Output Or Any
Filter Terminals

Customer To Supply
600V
Power For fans/PQ Board

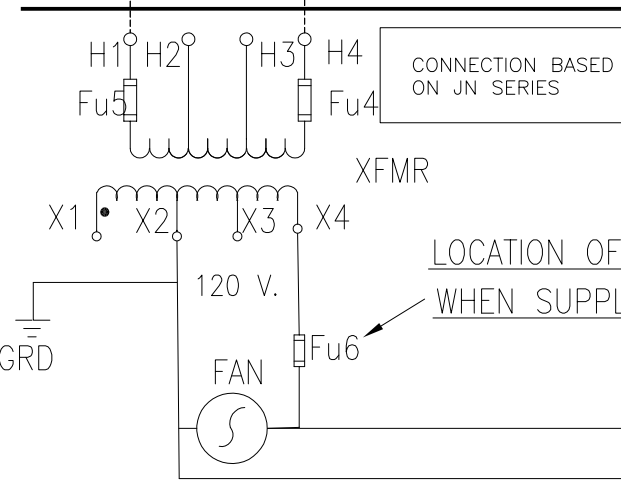
600 VOLTS
80Hz MAX

VFD WITH SOLID-STATE MOTOR
OVERLOAD PROTECTION FUNCTION OR
SEPARATE MOTOR OVERLOAD DEVICE
(CUSTOMER SUPPLIED)

CUSTOMER CONNECTIONS
INTO SINEWAVE FILTER

CUSTOMER
CONNECTIONS

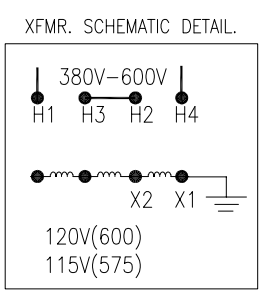
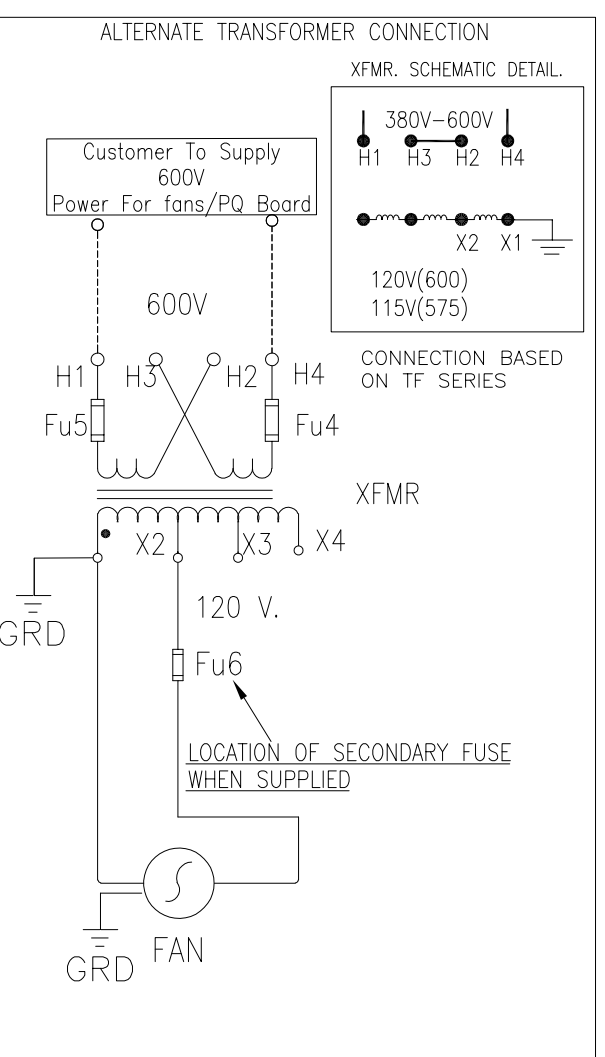
USE COPPER WIRE
60°C MIN <100 A.
75°C MIN >100 A.



LOCATION OF SECONDARY FUSE
WHEN SUPPLIED

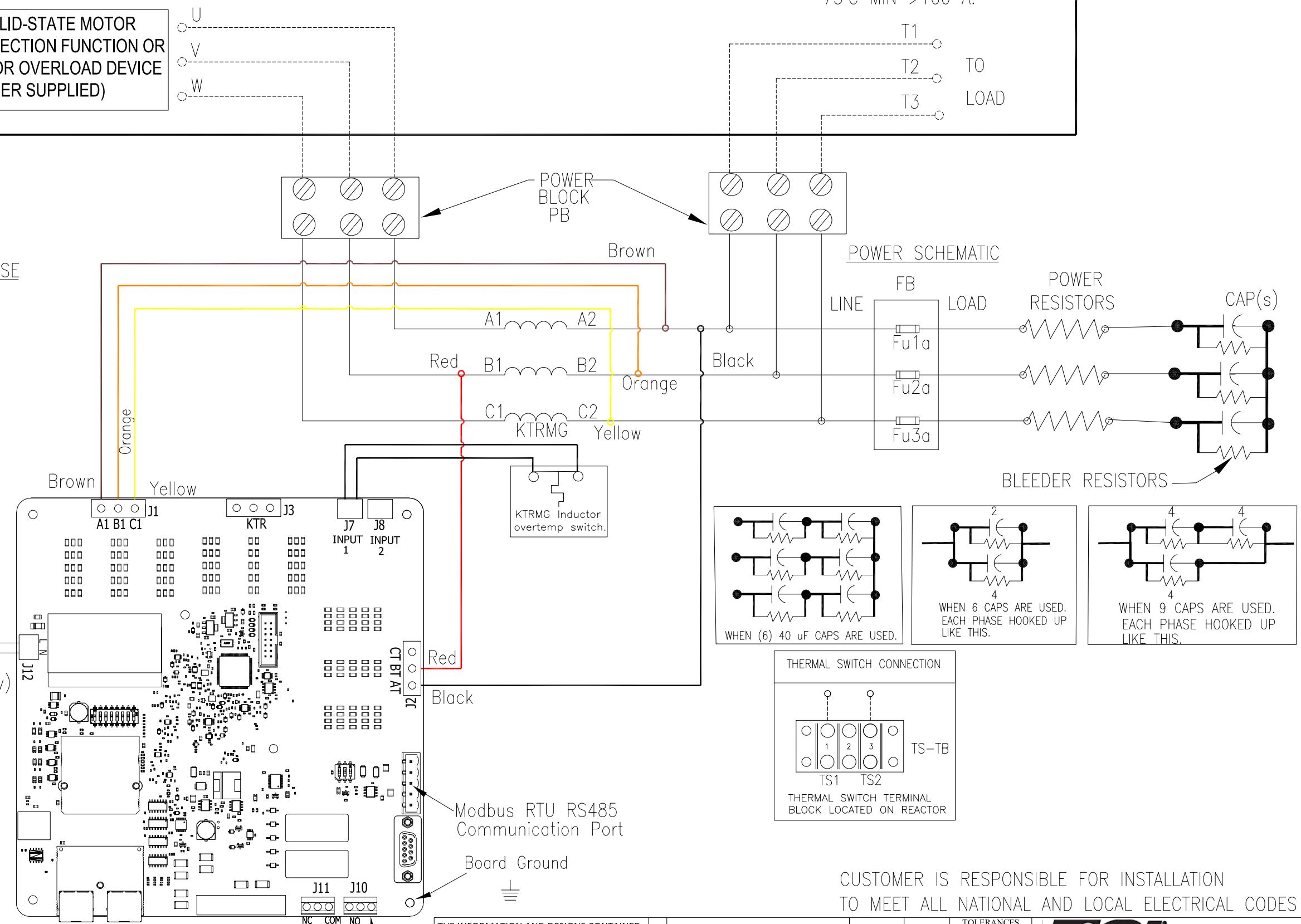
CONNECTION BASED
ON JN SERIES

CONTROL SCHEMATIC



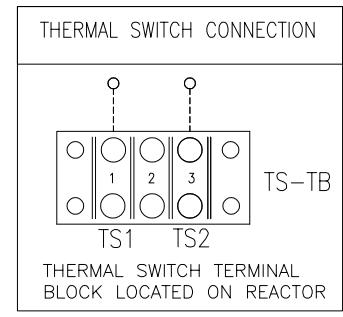
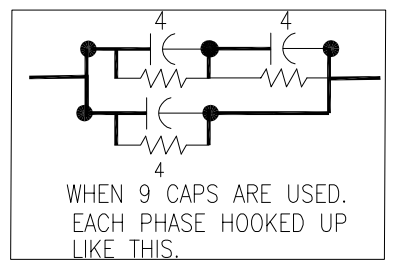
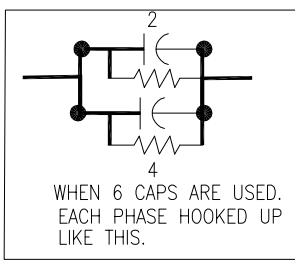
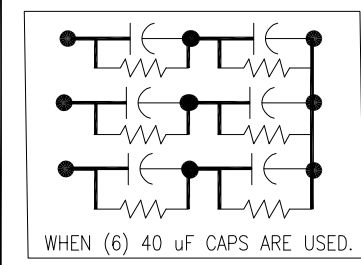
CONNECTION BASED
ON TF SERIES

LOCATION OF SECONDARY FUSE
WHEN SUPPLIED



Customer Connections
14-28 AWG.

Output
Relay 1
Output
Relay 2



CUSTOMER IS RESPONSIBLE FOR INSTALLATION
TO MEET ALL NATIONAL AND LOCAL ELECTRICAL CODES

THE INFORMATION AND DESIGNS CONTAINED
IN THIS DRAWING ARE CONFIDENTIAL AND THE
PROPRIETARY PROPERTY OF ALLIED MOTION
TECHNOLOGIES INC. AND ITS SUBSIDIARIES.
NEITHER THIS DESIGN NOR ANY INFORMATION
CONTAINED IN THIS DRAWING MAY BE
REPRODUCED OR DISCLOSED TO OTHERS
WITHOUT THE EXPRESS WRITTEN CONSENT OF
ALLIED MOTION TECHNOLOGIES INC. AND ITS
SUBSIDIARIES.

NO	REVISION	DATE	BY
A	5850, Update Customer Supplied Wording	2/2/2022	DSW

TOLERANCES (EXCEPT AS NOTED)		<p>TCI An Allied Motion Company</p>	<p>W132N10611 Grant Drive Germantown, WI 53022</p> <p>© 2022 TCI, LLC</p>
DECIMAL			
.XX ± n/a		PQconnect, SineWave Filter, 600V	
.XXX ± n/a		8Amps To 45 Amps	
FRACTIONAL		DRN BY: DSW	
± n/a		DATE: 6/30/2020	
ANGULAR		APRVD: [Signature]	
± n/a		SCALE: N/A	
		24281-11P	
		SIZE: A	
		SHT.1 OF 1	