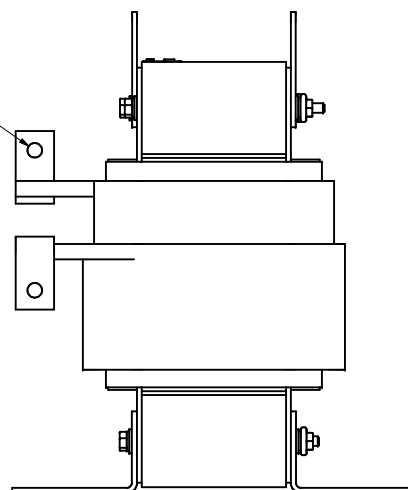
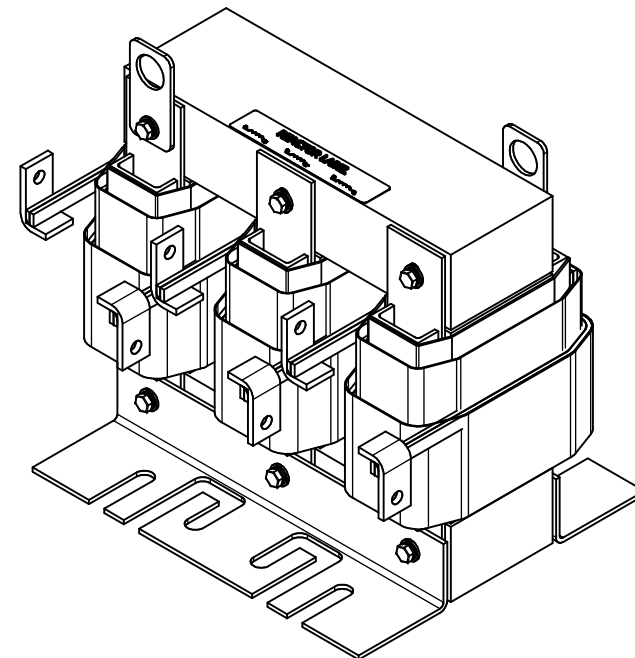


0.38 Dia Holes
6 Places




TCI Part#	Amps Max. (A)	μ H +8%/-2%	Approx Weight (LBS)
KTR90C65HGP	124	480	140



Customer Is Responsible For Installation to
Meet All National And Local Electrical Codes.

Material(s) Shall be RoHS Compliant

TCI, LLC CLAIMS PROPRIETARY RIGHTS IN THE MATERIAL HEREIN DISCLOSED. IT IS SUPPLIED WITHOUT PREJUDICE TO ANY PATENT RIGHTS OF TCI AND MAY NOT BE REPRODUCED OR USED TO MANUFACTURE ANYTHING SHOWN THEREIN WITHOUT WRITTEN PERMISSION FROM TCI.						TOLERANCES (EXCEPT AS NOTED)		 W132 N10611 Grant Drive Germantown, WI 53022 KTR90C65HGP, Open, 5th Tuning Inductor 600V, 124A, 3 Phase		
						DECIMAL				
						.XX \pm .25 .XXX \pm .10				
						FRACTIONAL				
						\pm 1/16				
	A	As Designed	01/06/2021	DSW		ANGULAR		DRN BY DSW	DATE 01/06/2021	108804
	NO	REVISION	DATE	BY		\pm 1"		SCALE 1/3.5	REVISE C5	SHT. 1 OF 1

108804

SHT 1 OF 1