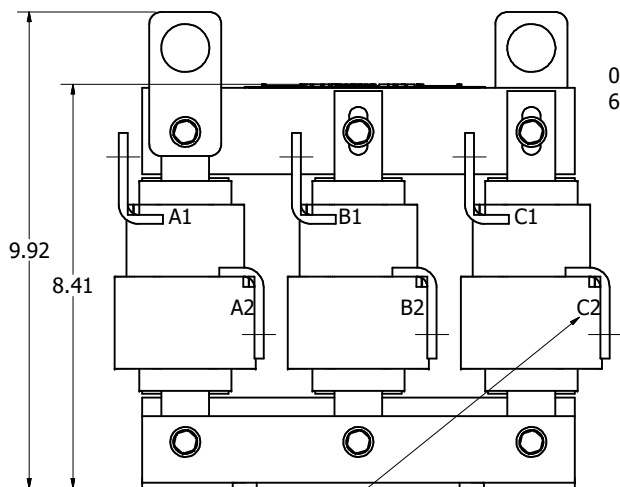
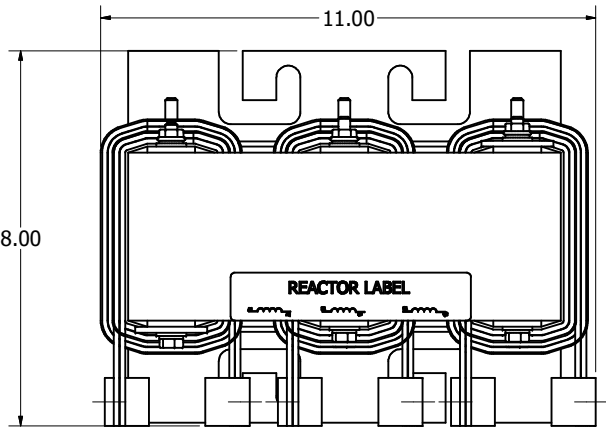
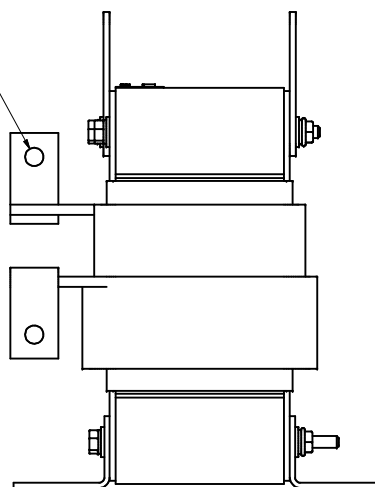


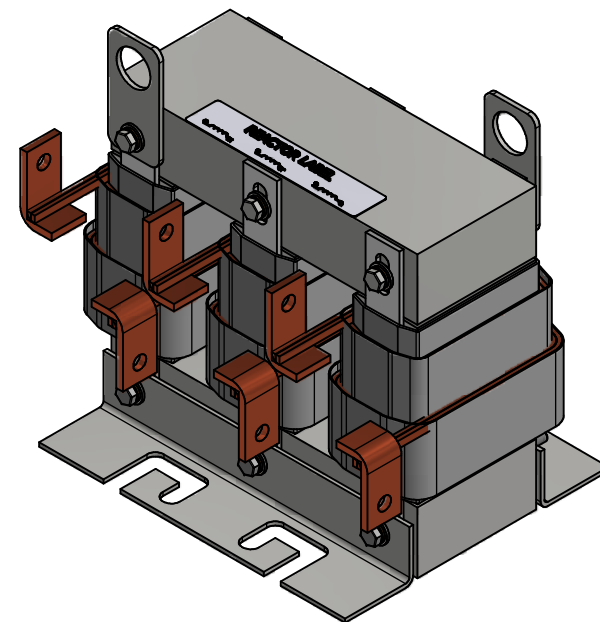
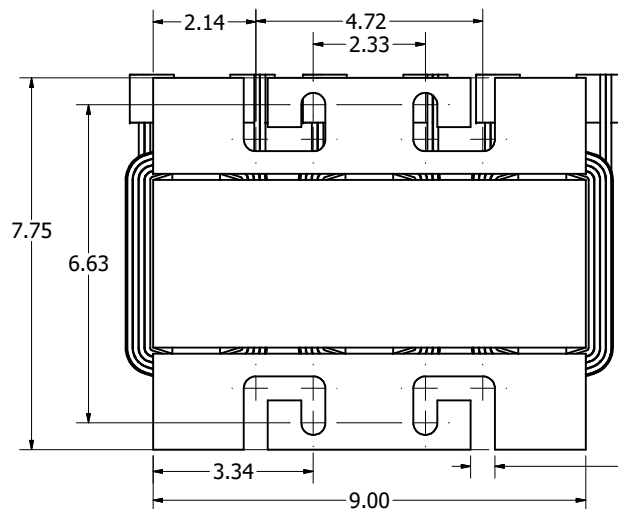
Reactor Part Number	Max Amps (A)	$\mu H \pm 8\% / -2\%$	Weight (LBS)
KTR30A65HG	57.40	922	68



0.38 Dia Holes
6 Places.



Markings for Reference only.



THE INFORMATION AND DESIGNS CONTAINED IN THIS DRAWING ARE CONFIDENTIAL AND THE PROPRIETARY PROPERTY OF ALLIED MOTION TECHNOLOGIES INC. AND ITS SUBSIDIARIES. NEITHER THIS DESIGN NOR ANY INFORMATION CONTAINED IN THIS DRAWING MAY BE REPRODUCED OR DISCLOSED TO OTHERS WITHOUT THE EXPRESS WRITTEN CONSENT OF ALLIED MOTION TECHNOLOGIES INC. AND ITS SUBSIDIARIES.

NO	REVISION	DATE	BY	SCALE
F	6489, Coil Redesigned	11/14/2023	DSW	
E	4624, Reroute wire to TB	1/31/19	DSW	

TOLERANCES (EXCEPT AS NOTED)
DECIMAL
.XX $\pm .25$
.XXX $\pm .10$
FRACTIONAL
$\pm 1/32$
ANGULAR
$\pm 1^\circ$

 An Allied Motion Company		W132N10611 (Chart 13Feb) Germantown, WI 53022 © 2023 TCI, LLC	
Trap Reactor KTR30A65HG			
DRN BY DSW	DATE 2/02/05	102297	
SCALE 1/2	APRVD:	SIZE	SHEET 1 OF 1