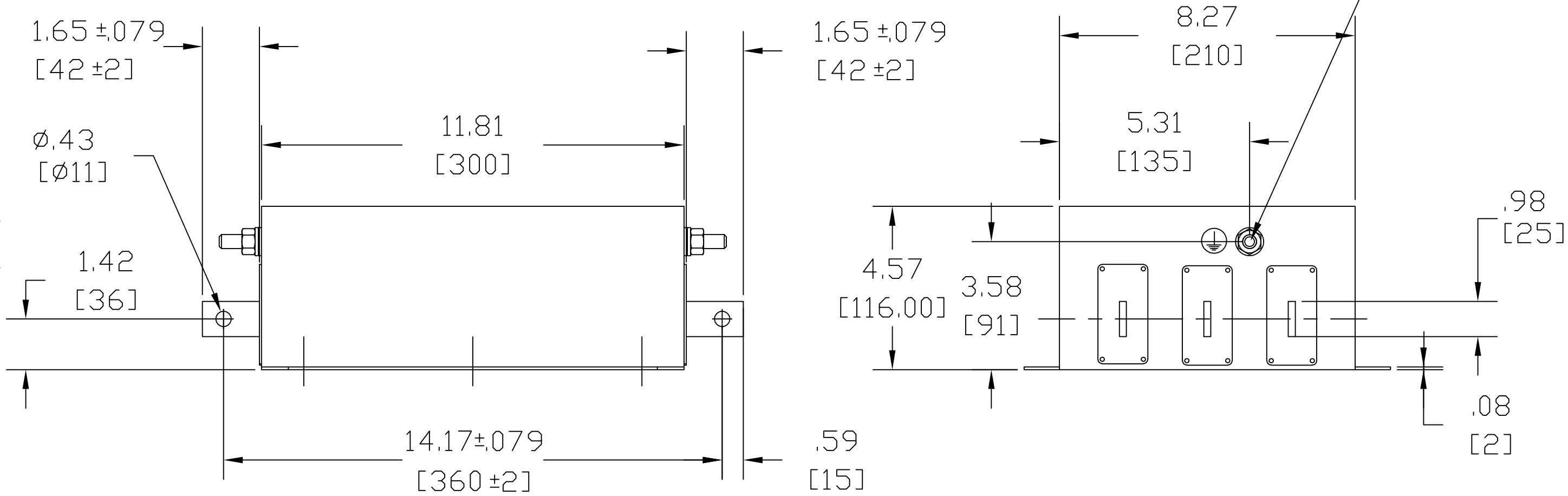
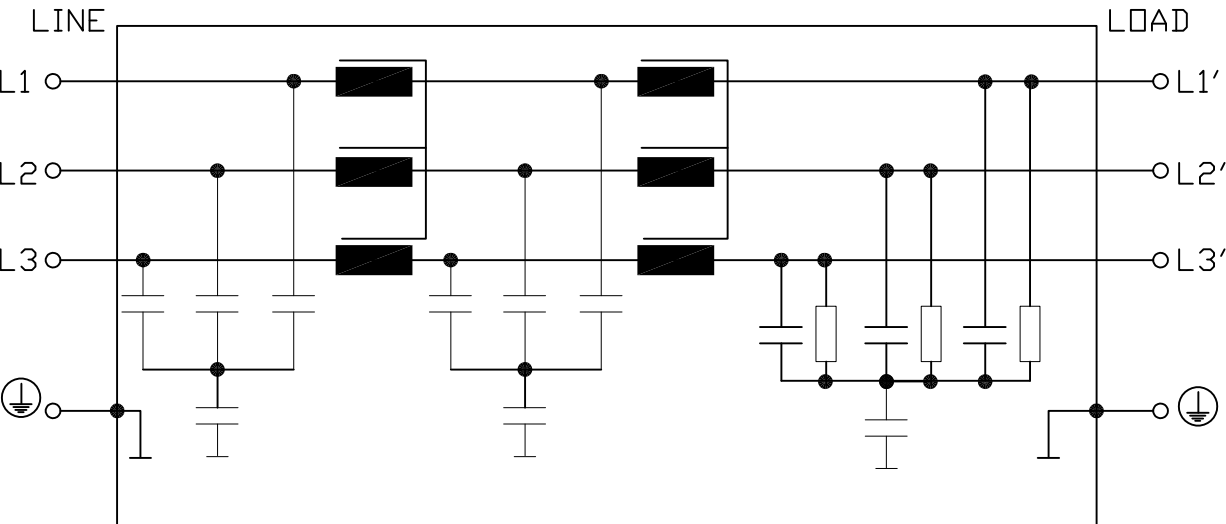


Typical Circuit Diagram.



Technical data and measuring conditions.

Rated Voltage $V_R$	760/440 V AC, 50/60Hz.			
Rated Current $I_R$	Referred to 40 °C ambient temperature 3270 V DC, 2 s (line/line)			
Test Voltage $V_{test}$	2890 V DC, 2 s (line/case)			
Overload Capability (thermal)	1.5 · $I_R$ for 3 min per hour or 2.5 · $I_R$ for 30 s per hour			
Leakage Current $I_{leak}$	At 760 V AC, 50 Hz.			
Climatic Category (IEC 60068-1)	25/100/21 (-25 °C/+100 °C/21 days damp heat test)			
Approval Standards	EN 133200, UL 1283, CSA C22.2 No. 8			
Approval Markings	UR, cUR			

$V_R$ AC V	$I_R$ A	$I_{leak}$ mA	$R_{typ.}$ µ ohm	Approx. Weight kg. / lbs.
760/440	320	< 28	67	21 /46.2

			TOLERANCES (EXCEPT AS NOTED)	W132 N10611 Grant Drive Germantown, WI 53022
			DECIMAL .XX ±.02 .XXX±.01	
ECO 3959 ADDED	4/24/17	JRN	FRACTIONAL ± 1/32	KRF FILTER KRF0400VCB, 600-690V,400A
APPROVAL MARKINGS			ANGULAR ± 1/2°	
NO	REVISION	DATE	BY	DRN BY DSW DATE 1/06/2010 SCALE TO FIT APRVD.
				DWG. NO. KRF0400VCB SHT.1 OF1