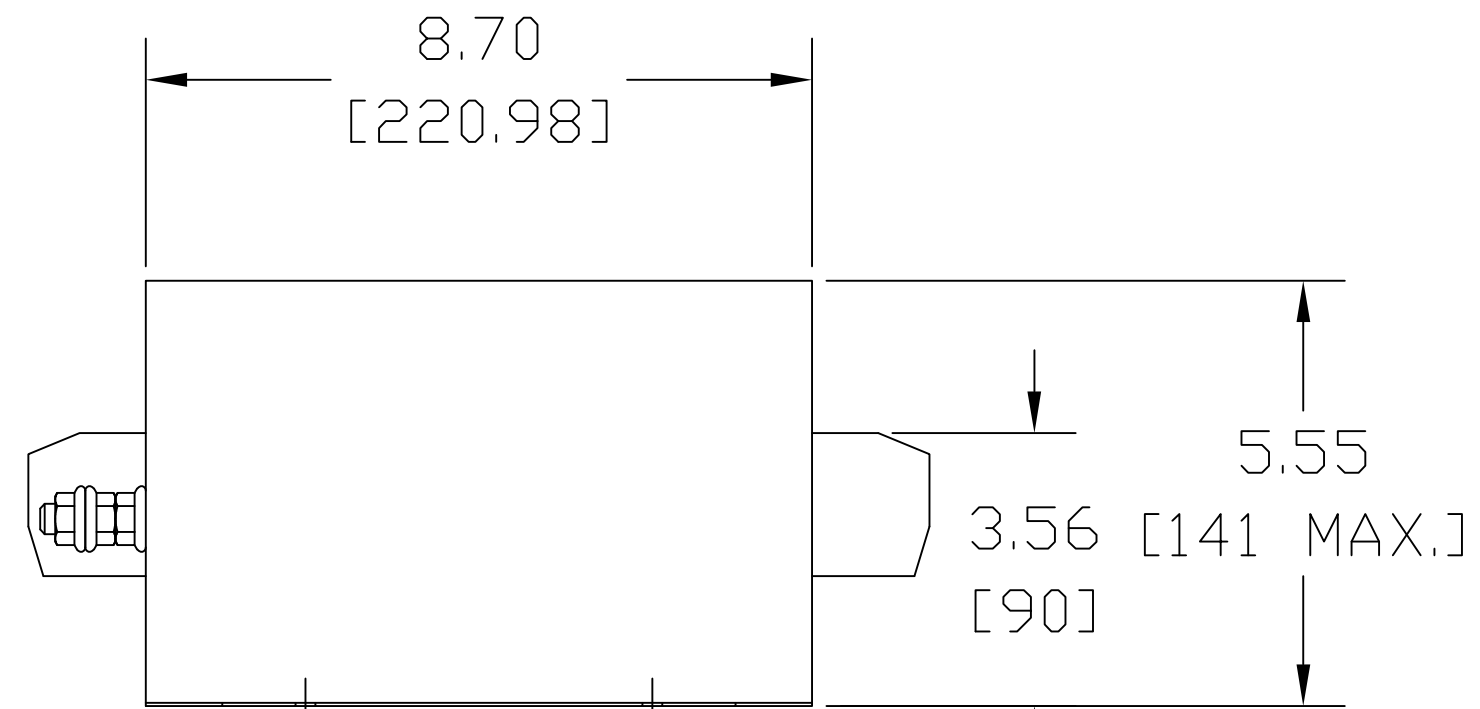
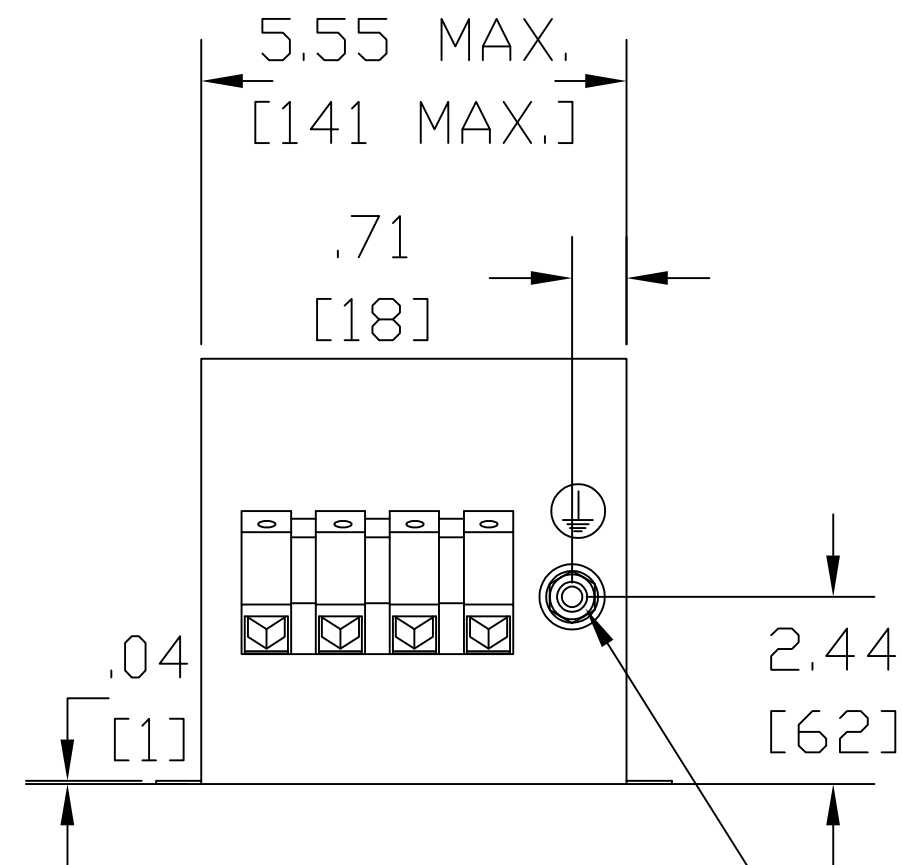
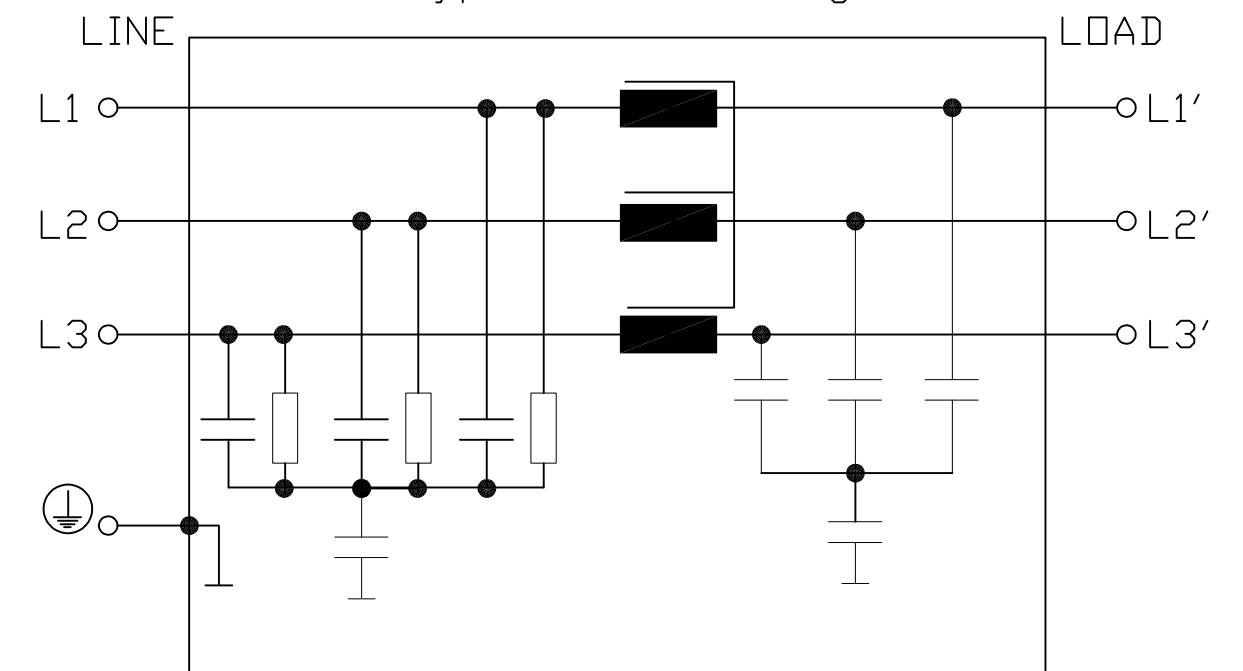


Terminals 25mm²
Tightening Torque of
screw 4-4.5 Nm.



Typical Circuit Diagram.



M10 X 35
Tightening Torque
10 ± 1 Nm

Technical data and measuring conditions.

Rated Voltage V_R	760/440 V AC, 50/60Hz.
Rated Current I_R	Referred to 40 °C ambient temperature
Test Voltage V_{test}	3270 V DC, 2 s (line/line) 3000 V DC, 2 s (line/case)
Overload Capability (thermal)	1.5 · I_R for 3 min per hour or 2.5 · I_R for 30 s per hour
Leakage Current I_{leak}	At 690 V AC, 50 Hz.
Climatic Category (IEC 60068-1)	25/100/21 (-25 °C/+100 °C/21 days damp heat test)
Approval Standards	EN 133200, UL 1283, CSA C22.2 No. 8
Approval Markings	UR, cUR

V_R AC V	I_R A	Terminal cross section mm ²	I_{leak} mA	$R_{typ.}$ m ohm	Approx. Weight kg. / lbs.
760/440	80	25	< 12	1.0	9.5 / 20.9

		TOLERANCES (EXCEPT AS NOTED)		W132 N10611 Grant Drive Germantown, WI 53022
		DECIMAL		
		.XX ± .02		KRF FILTER KRF0080VTB, 600-690V, 80A
		.XXX ± .01		
ECO 3959 ADDED		4/24/17	JRN	FRACTIONAL ± 1/32
APPROVAL MARKINGS				ANGULAR ± 1/2°
A UPDATE APPROVALS		6/13/11	DSW	DRN BY DSW DATE 1/07/2010 DWG. NO. KRF0080VTB
NO REVISION		DATE	BY	SCALE TO FIT APRVD. SHT.1 OF1