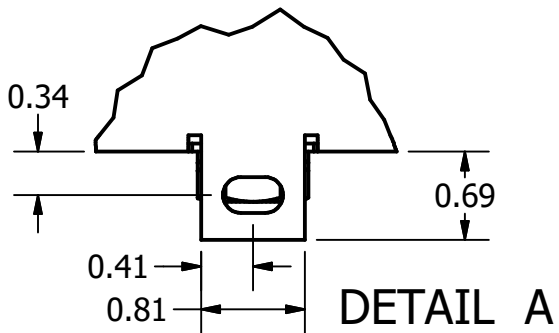
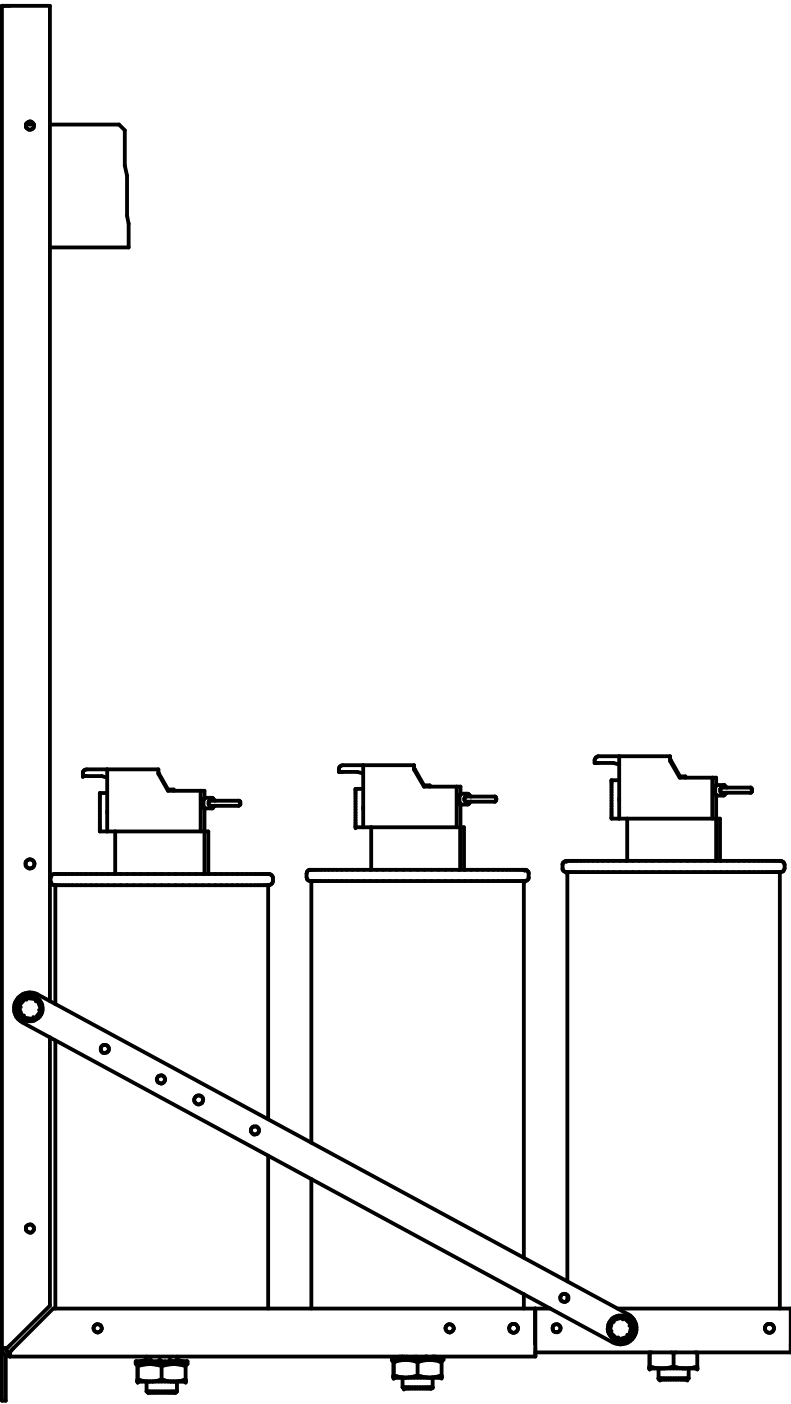
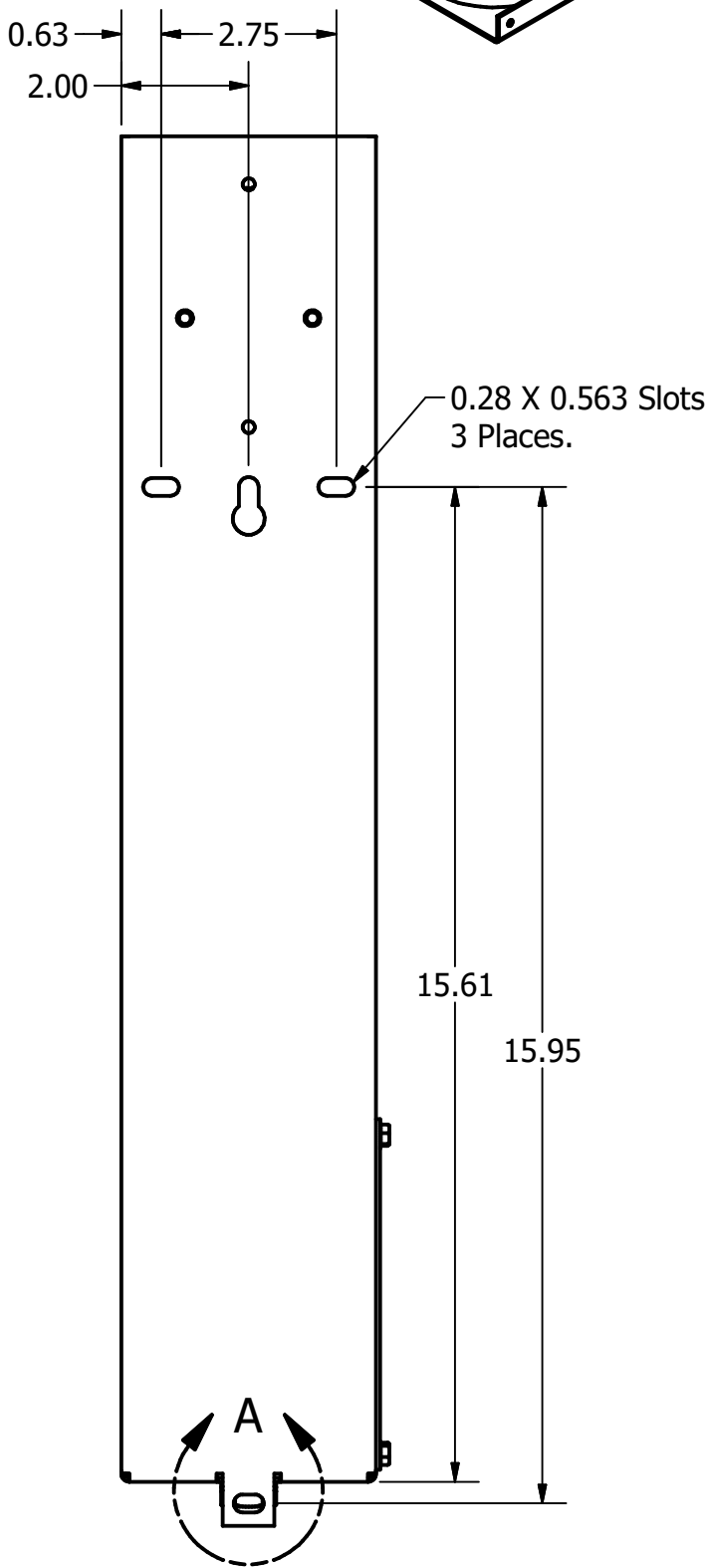
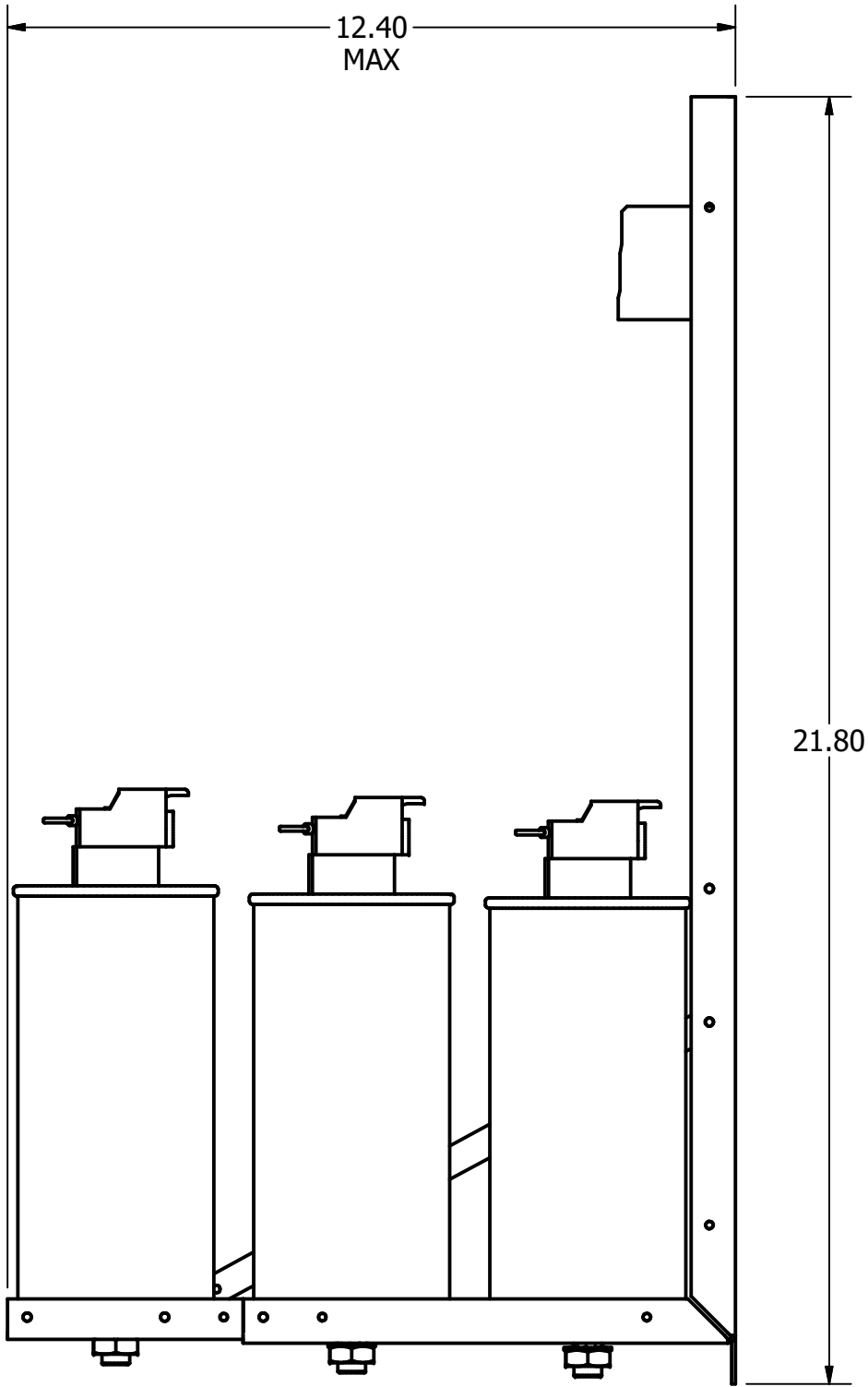
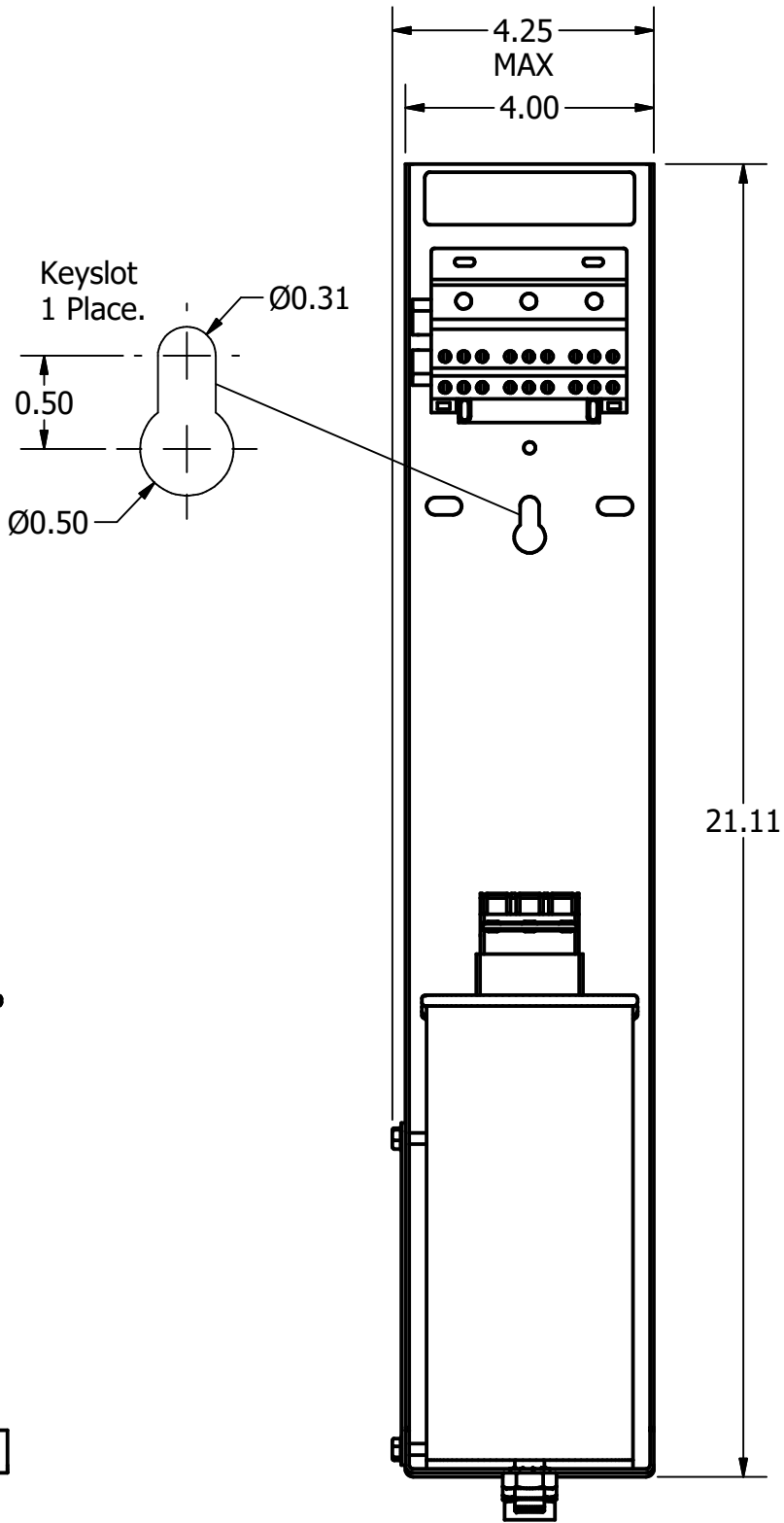
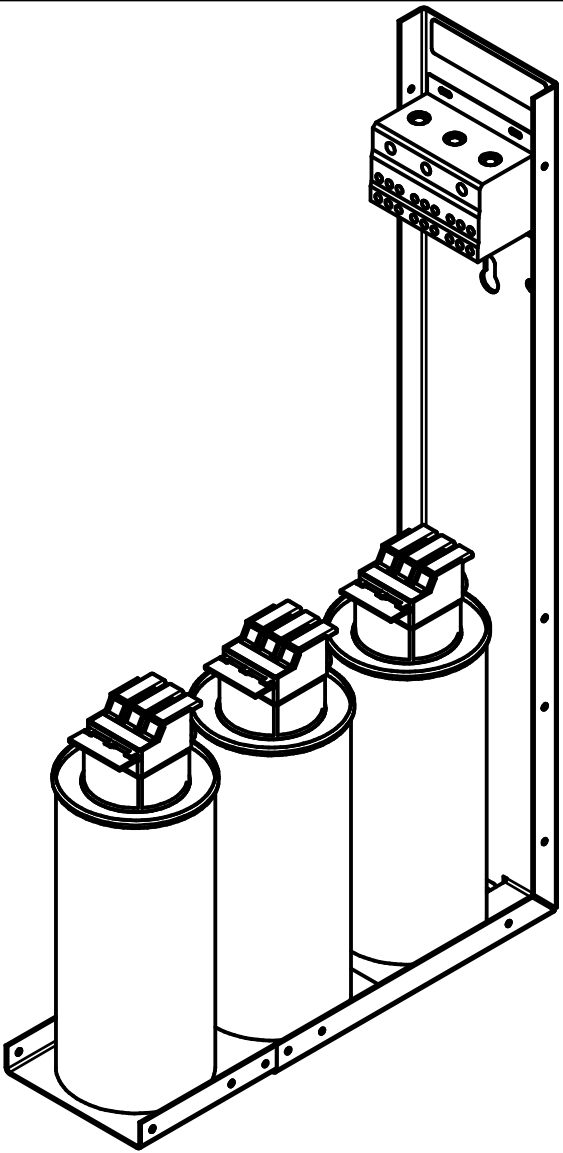
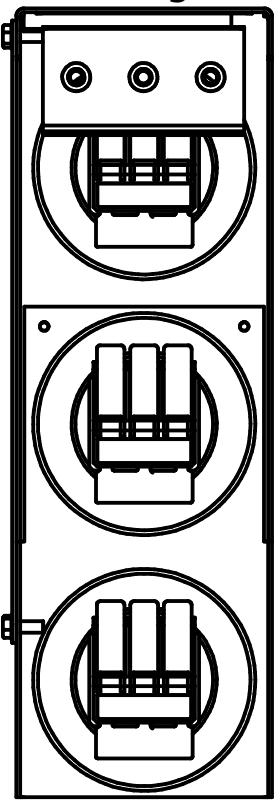



KPCUL045A60, 480V, 45kVar, 150HP
Approx. Weight: 10 Lbs

Customer Input	
Wire Range	Tightening Torque
8-2/0 AWG	35.5 Lb-In



HOLE TOLERANCE $\pm .005$

Customer Is Responsible For Installation
To Meet All National And Local Electrical Codes.

TOLERANCES (EXCEPT AS NOTED)		THE INFORMATION AND DESIGNS CONTAINED IN THIS DRAWING ARE CONFIDENTIAL AND THE PROPRIETARY PROPERTY OF ALLIENT INC. AND ITS SUBSIDIARIES. NEITHER THIS DESIGN NOR ANY INFORMATION CONTAINED IN THIS DRAWING MAY BE REPRODUCED OR DISCLOSED TO OTHERS WITHOUT THE EXPRESS WRITTEN CONSENT OF ALLIENT INC. AND ITS SUBSIDIARIES.							DRN. BY		W132N10611 Grant Drive Germantown, WI 53022 © 2025 Allient Inc.		
DECIMAL												DSW	
.XX ± .25										DATE	08/22/11		
.XXX ± .10			D	7171	Depict New Capacitor	08/15/25	RJH						
			C	3093	Caps 3 15kVar	05/07/14	DSW						
FRACTIONAL ± 1/16			B	2805	Update Bracket	01/09/12	DSW						
			A		As Built	10/01/11	DSW						
ANGULAR ± 1°			NO	ECO	REVISION	DATE	BY	SCALE:	1/3	DRN. NO.	104794DG	SIZE C	SHT.1 OF 1

Note: 27908, Manual KPC Installation Guide
MUST SHIP WITH EACH ASSEMBLY.