

KPCUL040C60, 600V, 40kVar, 125HP.
APPROX. WEIGHT: 11LBS

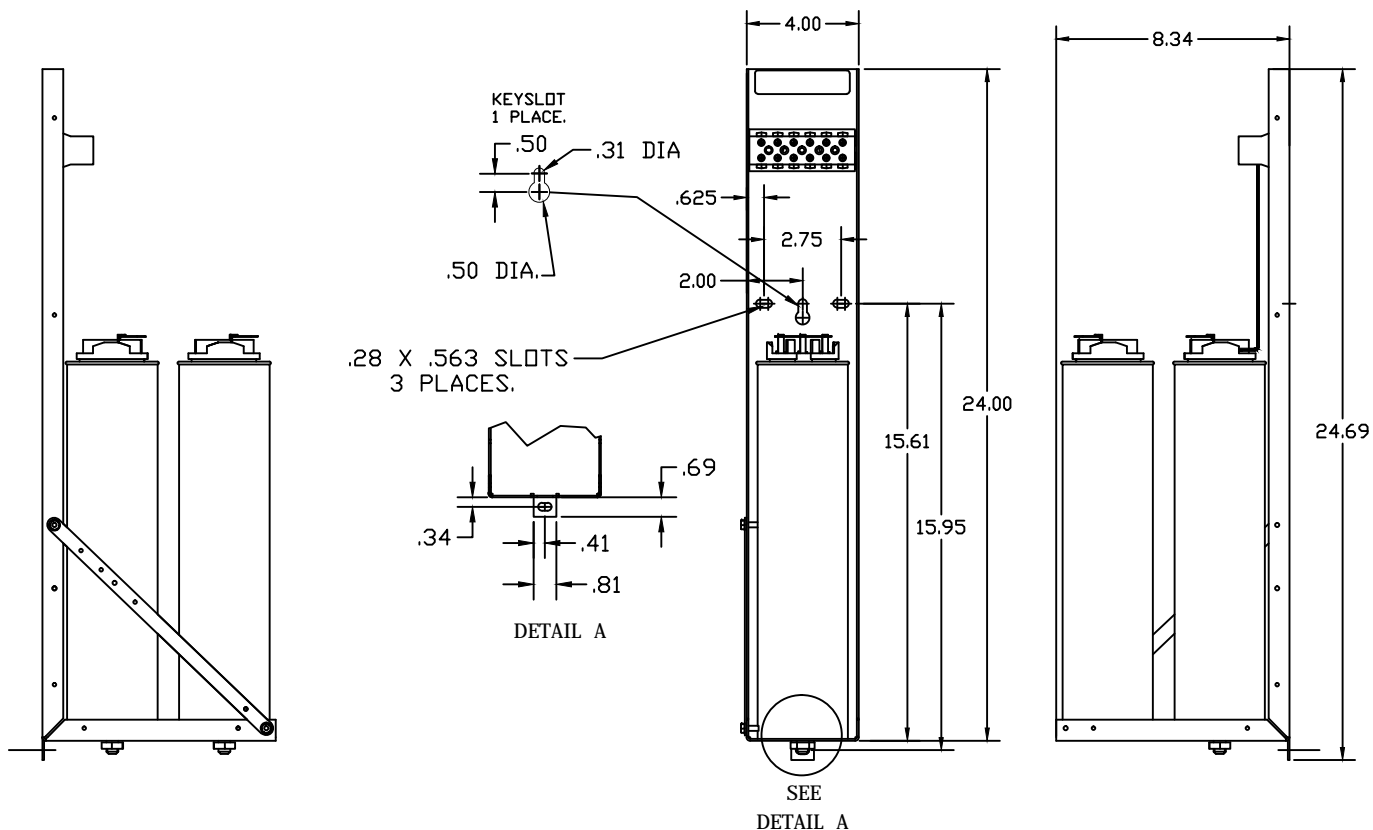
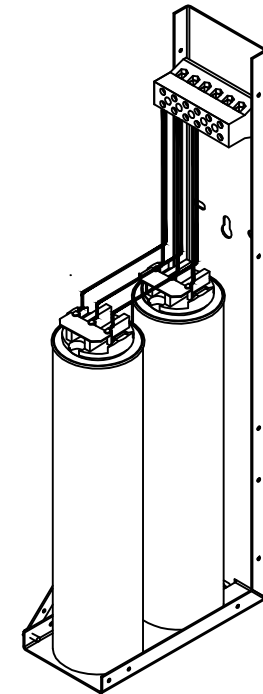
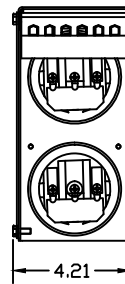
TORQUE(LB-IN)=CUSTOMER WIRE

35=1 AWG THRU 4 AWG


30=6 AWG THRU 14 AWG

25=16 AWG THRU 20 AWG

20=22 AWG



NOTE: 27908, Manual KPC Installation Guide
MUST SHIP WITH EACH ASSEMBLY.

				TOLERANCES (EXCEPT AS NOTED)	 W132 N10611 GRANT DR. GERMANTOWN, WI. 53022 KPCUL040C60, 125HP, 40kVar.
				DECIMAL	
				.XX ± .02	
				.XXX ± .01	
B	2805 UPDATE BRACKET	1/4/12	DSW	FRACTIONAL ± 1/32	
A	AS BUILT	9/8/11	DSW	ANGULAR ± 1/2°	
NO	REVISION	DATE	BY	SCALE TO FIT	DRG. NO. DATE APPRVD. C 8/30/11 104838DG svt l mcl