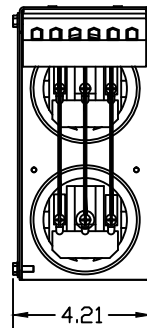
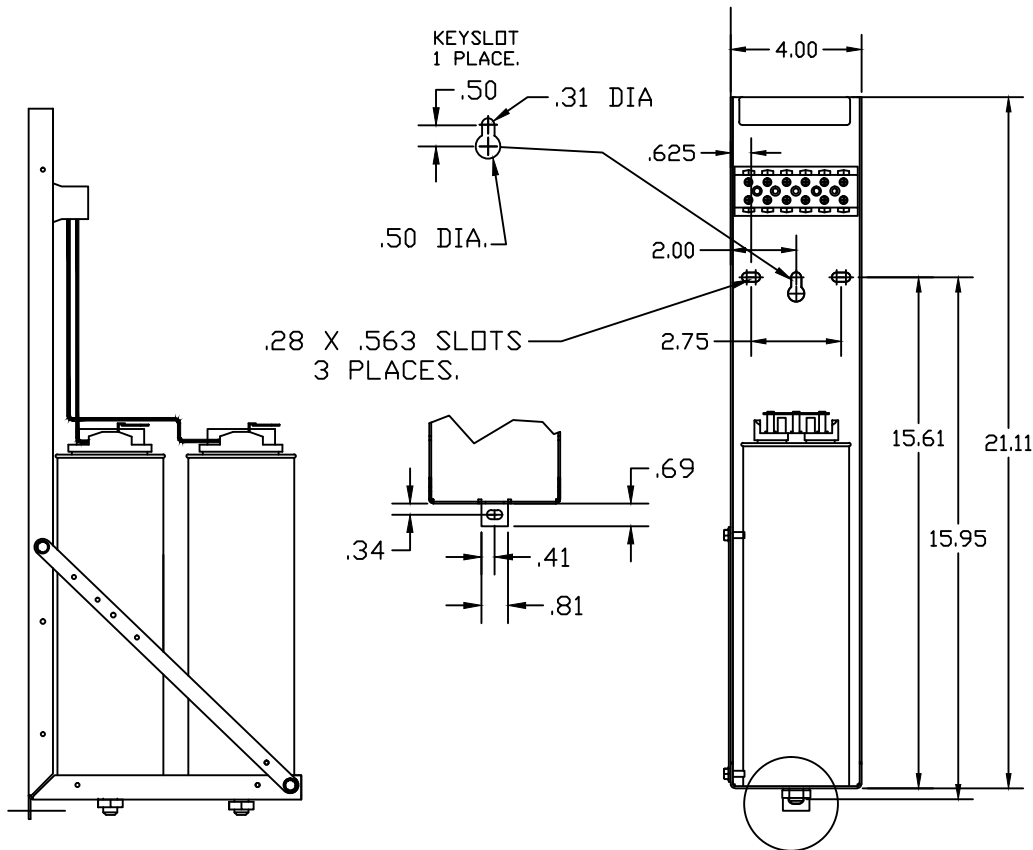
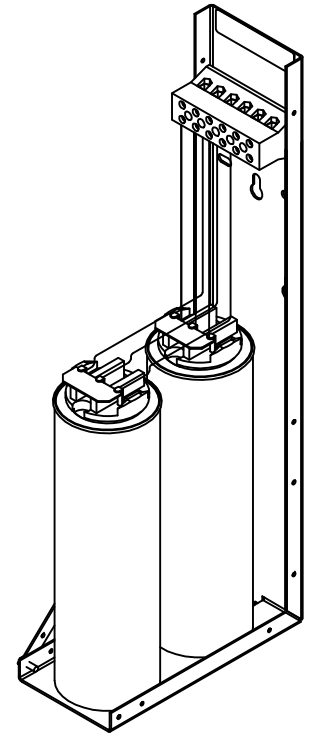


KPCUL030C60, 600V, 30kVar, 100HP.
APPROX. WEIGHT: 9.2LBS




TORQUE(LB-IN)=CUSTOMER WIRE

35=1 AWG THRU 4 AWG
30=6 AWG THRU 14 AWG
25=16 AWG THRU 20 AWG
20=22 AWG



SEE
DETAIL A

NOTE: 27908, Manual KPC Installation Guide
MUST SHIP WITH EACH ASSEMBLY.

				TOLERANCES EXCEPT AS NOTED		 W132 N10611 GRANT DR. GERMANTOWN, WI. 53022	
				DECIMAL			
				.XX ± .02		KPCUL030C60, 100HP, 30kVar.	
				.XXX± .01			
				FRACTIONAL ± 1/32		PANELIZED CABS	
B	2805 UPDATE BRACKET	1/12/12	DSW				
A	AS BUILT	9/8/11	DSW	ANGULAR ± 1/2°		DWS DEL SCALE DSW DATE 8/29/11 TO FIT APPROV. C 104837DG SHT. 1 of 1	