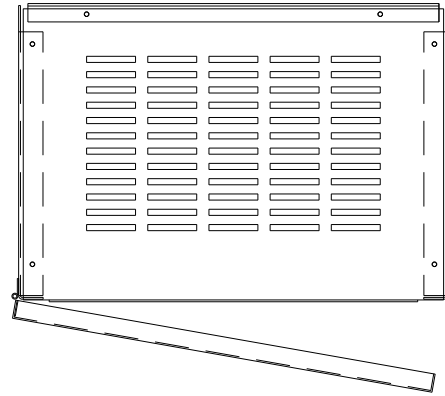
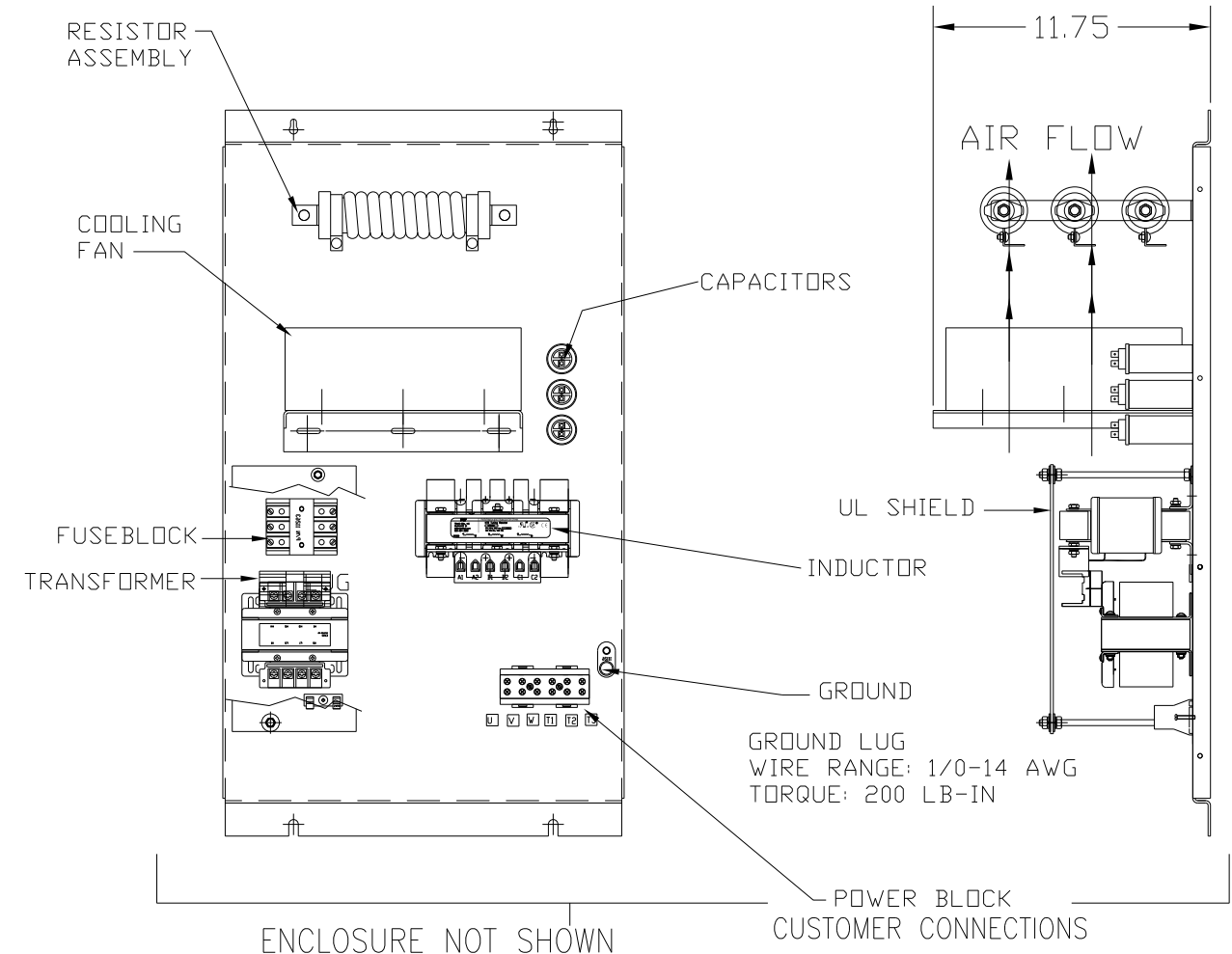
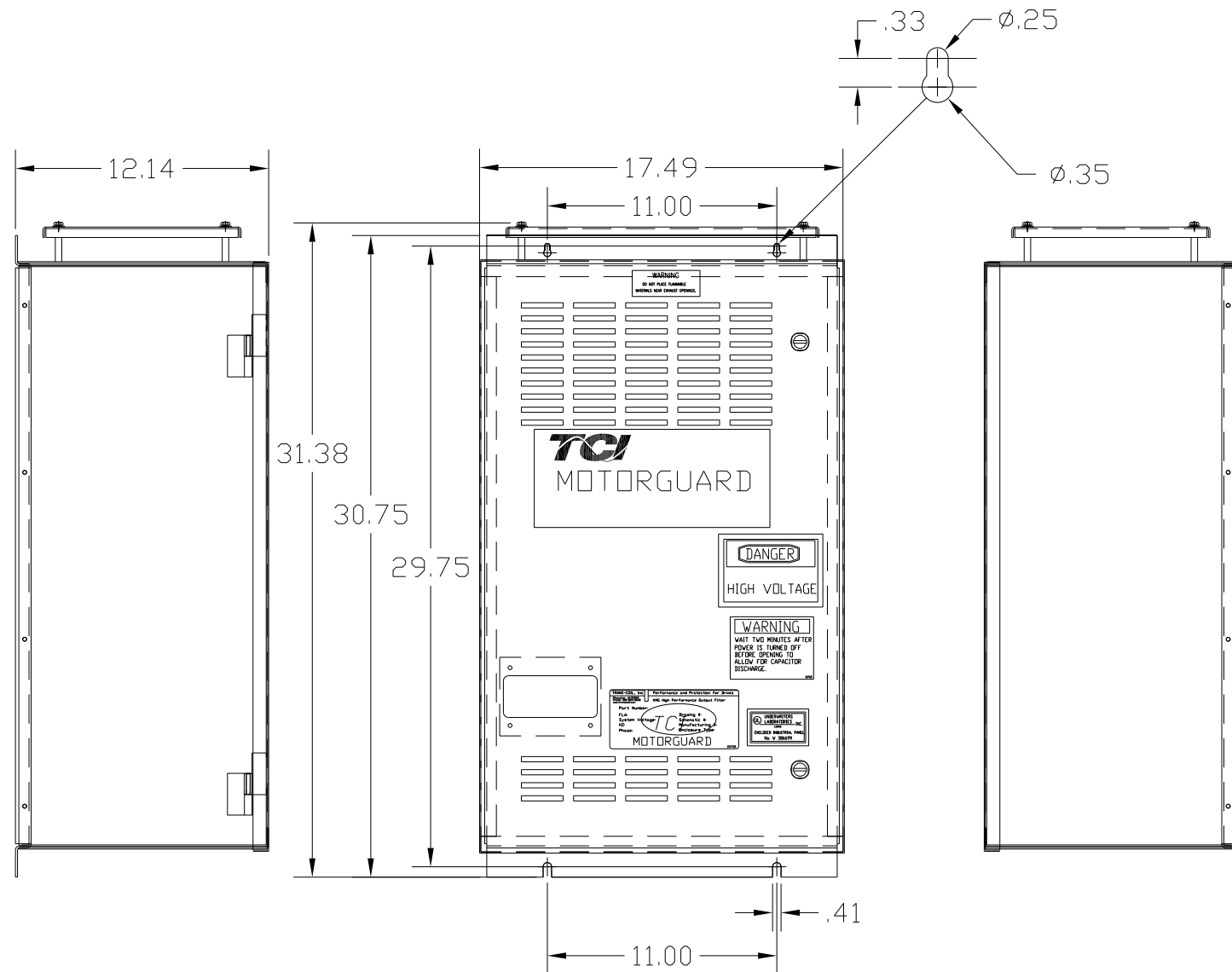


KMG8A01A
 APPROX WEIGHT: 109LBS

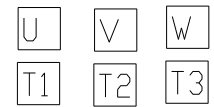


KMG HIGH PERFORMANCE OUTPUT FILTER
 PART NUMBER: KMG8A01A
 FLA: 8
 SYSTEM VOLTAGE: 480
 HZ: 80
 PHASE: 3
 DRAWING#: 104348DG
 SCHEMATIC: 24281-1A
MOTORGUARD



FOR SCHEMATIC SEE DRAWING P/N 24281-1A

LINE CONNECTIONS
 WIRE RANGE: 1 AWG THRU 4 AWG 35 LB-IN
 6 AWG THRU 14 AWG 30 LB-IN
 16 AWG THRU 22 AWG 25 LB-IN



CUSTOMER IS RESPONSIBLE FOR PROPER
 INSTALLATION OF ASSEMBLY IN ACCORDANCE
 WITH LOCAL AND NATIONAL CODES.

				TOLERANCES (EXCEPT AS NOTED): DECIMAL	7878 N. 86th STREET MILWAUKEE, WI 53224 Standard SineWave Filter ENCLOSED, 5HP, 8AMP, 480V
				.XX ± .02	
				.XXX ± .01	
				FRACTIONAL ± 1/32	
				ANGULAR ± 1/2°	
NO	REVISION	DATE	BY	SCALE TO FIT	DRN. BY: DSW DATE: 10/07/2010 APRVD.
					DWG. NO. 104348DG SHT. 1 OF 1