

KMG80C00A

APPROX WEIGHT: 194LBS

KMG HIGH PERFORMANCE OUTPUT FILTER

PART NUMBER: KMG80C00A

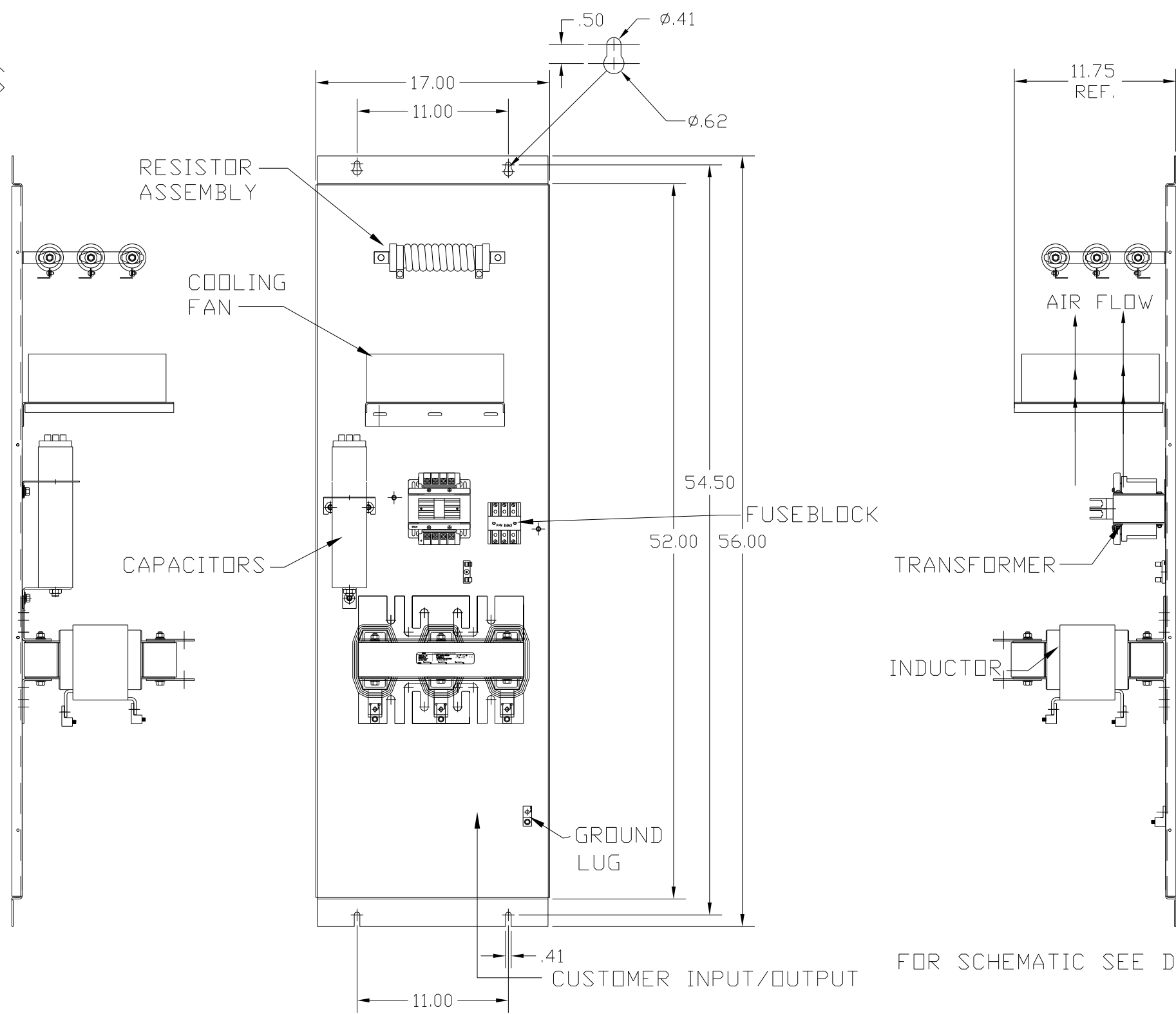
FLA: 80 DRAWING#: 104423DG

SYSTEM VOLTAGE: 600 SCHEMATIC: 24281-23A

HZ: 80

PHASE: 3

MOTORGUARD



FOR SCHEMATIC SEE DRAWING P/N 24281-23A

GROUND LUG
 WIRE RANGE: 2/0-#6 AWG
 TORQUE: 120 LB-IN

LINE CONNECTIONS
 WIRE RANGE: 2/0-#6 AWG
 TORQUE: 120 LB-IN

CUSTOMER IS RESPONSIBLE FOR PROPER COOLING OF COMPONENTS IN CUSTOMERS ASSEMBLY

CUSTOMER IS RESPONSIBLE FOR PROPER INSTALLATION OF ASSEMBLY IN ACCORDANCE WITH LOCAL AND NATIONAL CODES.

NO	REVISION	DATE	BY	TOLERANCES (EXCEPT AS NOTED)
				DECIMAL
				.XX ± .02
				.XXX ± .01
				FRACTIONAL
				± 1/32
				ANGULAR
				± 1/2°

TCL 7878 N. 86th STREET
 MILWAUKEE, WI 53224

Standard, SineWave Filter
 Open, 75HP, 80AMP, 600V

DRN. BY DSW DATE 10/12/2010 DWG. NO. 104423DG

SCALE TO FIT APRVD. B SHT.1 of 1