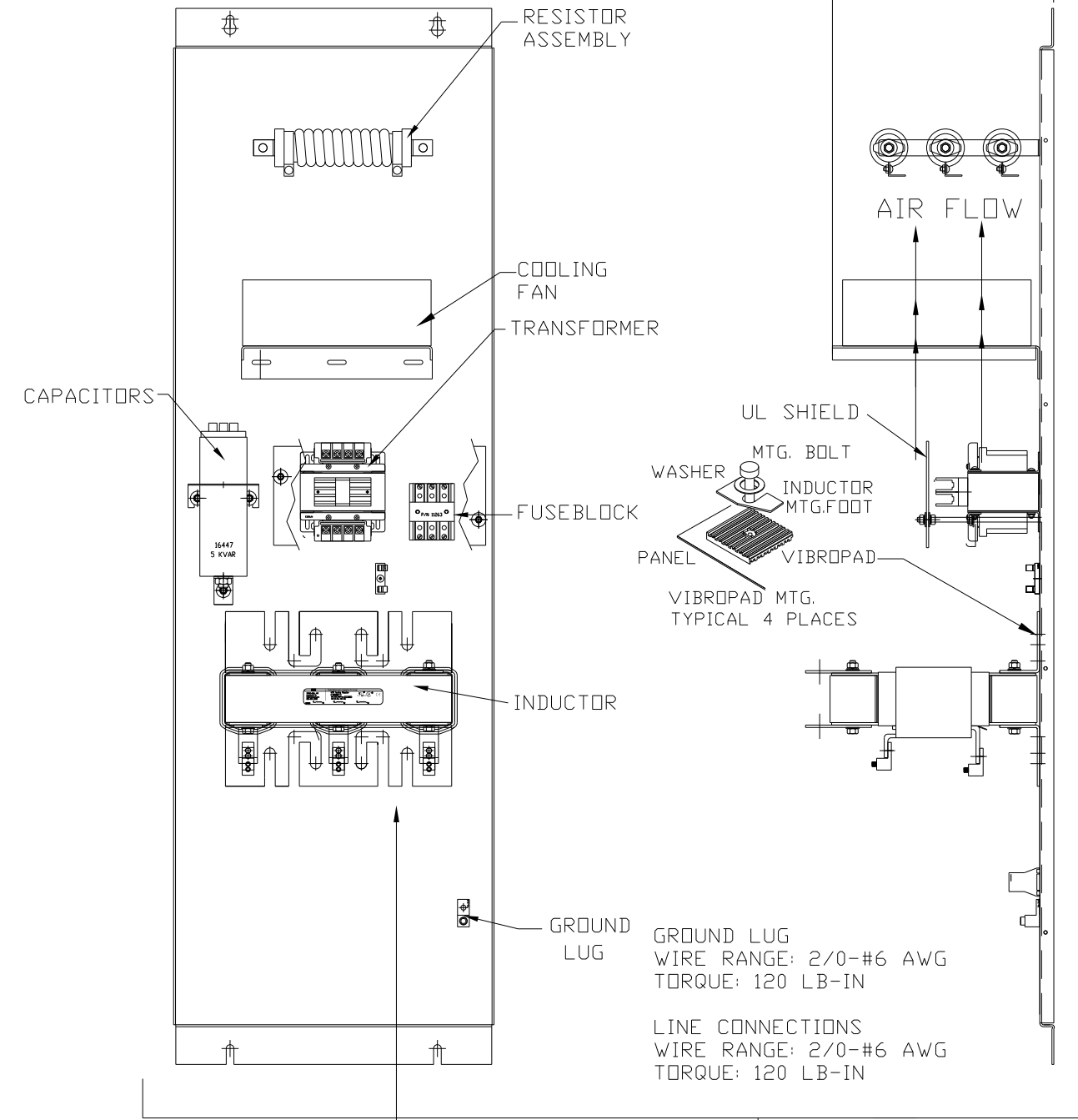
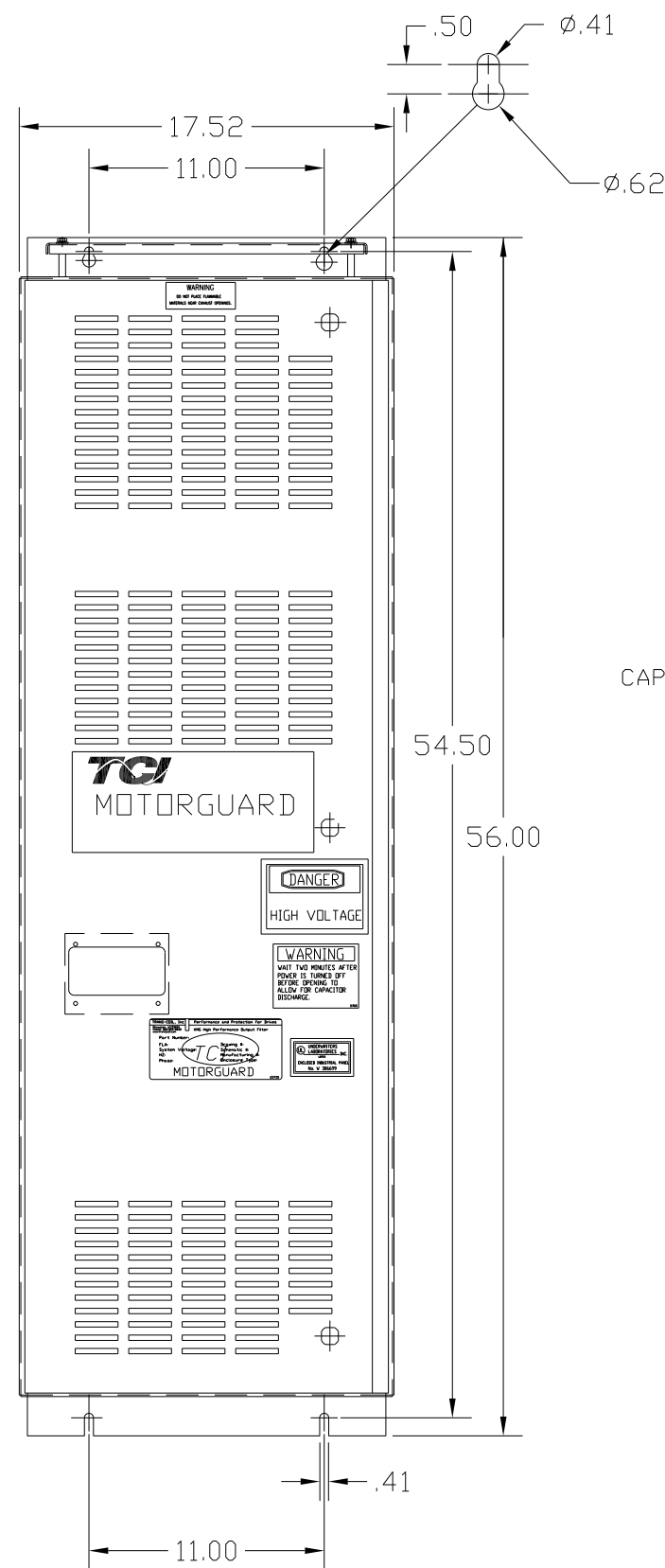
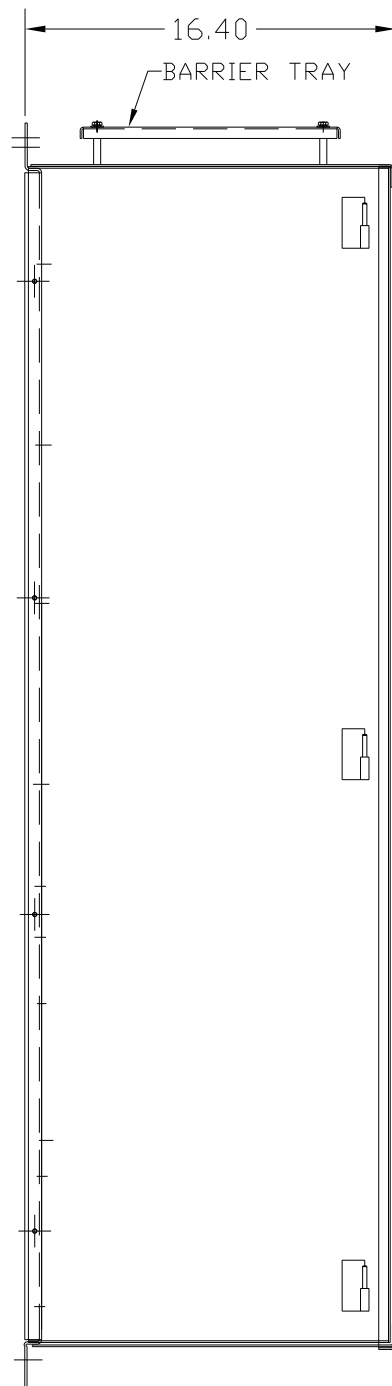


KMG65C01A

APPROX WEIGHT: 263LBS

FOR SCHEMATIC SEE DRAWING P/N 24281-23A



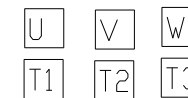
GROUND LUG  
WIRE RANGE: 2/0-#6 AWG  
TORQUE: 120 LB-IN

LINE CONNECTIONS  
WIRE RANGE: 2/0-#6 AWG  
TORQUE: 120 LB-IN

SUGGESTED LOCATION FOR CUSTOMER INPUT/OUTPUT

ENCLOSURE NOT SHOWN

CUSTOMER CONNECTIONS



CUSTOMER IS RESPONSIBLE FOR PROPER INSTALLATION OF ASSEMBLY IN ACCORDANCE WITH LOCAL AND NATIONAL CODES.

KMG HIGH PERFORMANCE OUTPUT FILTER

PART NUMBER: KMG65C01A

FLA: 65

SYSTEM VOLTAGE: 600

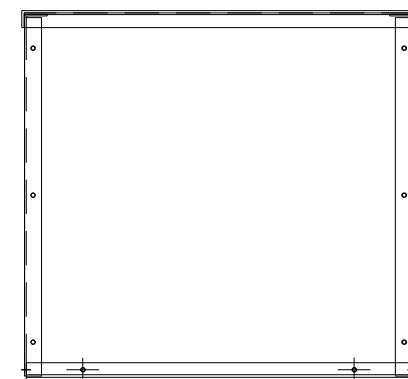
HZ: 80

PHASE: 3

DRAWING#: 104443DG

SCHEMATIC: 24281-23A

MOTORGUARD



				TOLERANCES (EXCEPT AS NOTED)		7878 N. 86th STREET MILWAUKEE, WI 53224	
				DECIMAL		Standard, SineWave Filter	
				.XX ± .02		ENCLOSED, 60HP, 65AMP, 600V	
				.XXX ± .01		DRN. BY DSW DATE 10/14/2010 DWG. NO. 104443DG	
				FRACTIONAL		SCALE TO FIT	
				± 1/32		APRVD. C	
				ANGULAR		SHT. 1 OF 1	
				± 1/2°			
NO	REVISION	DATE	BY				