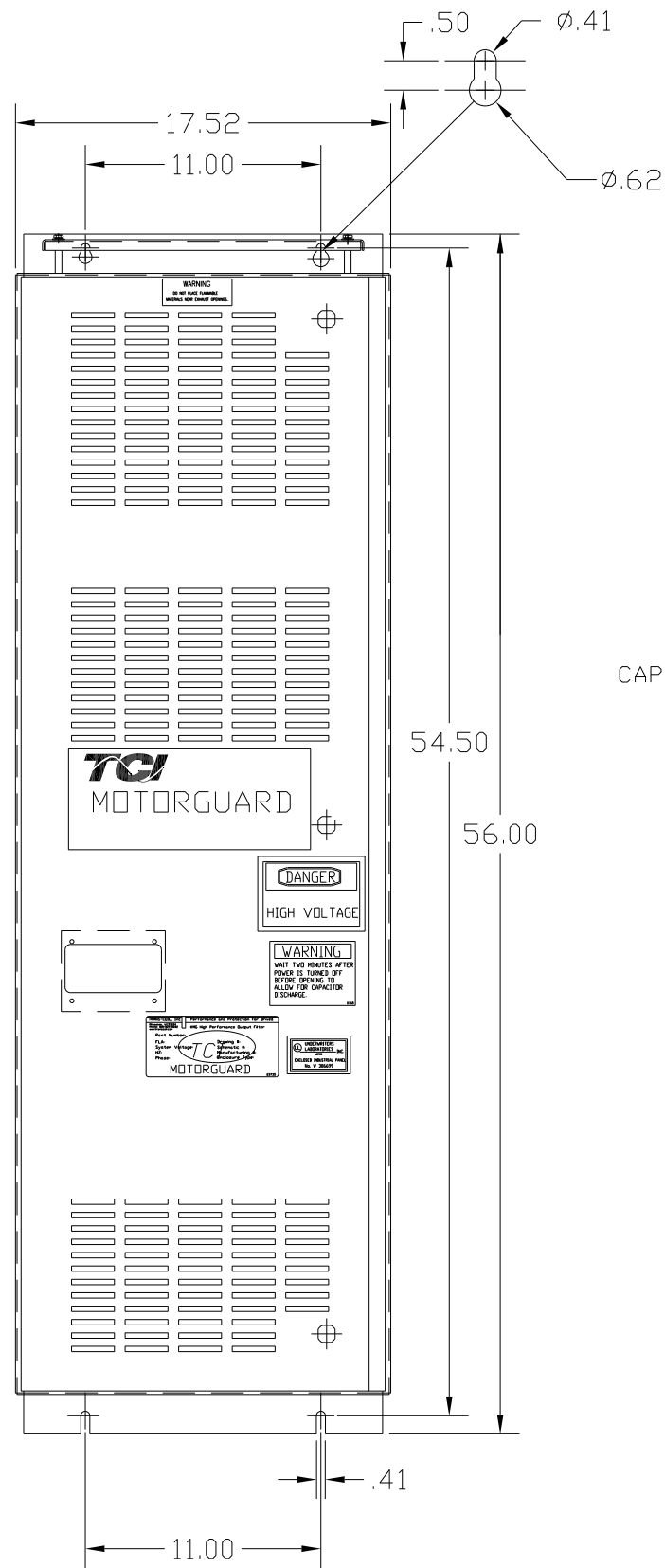
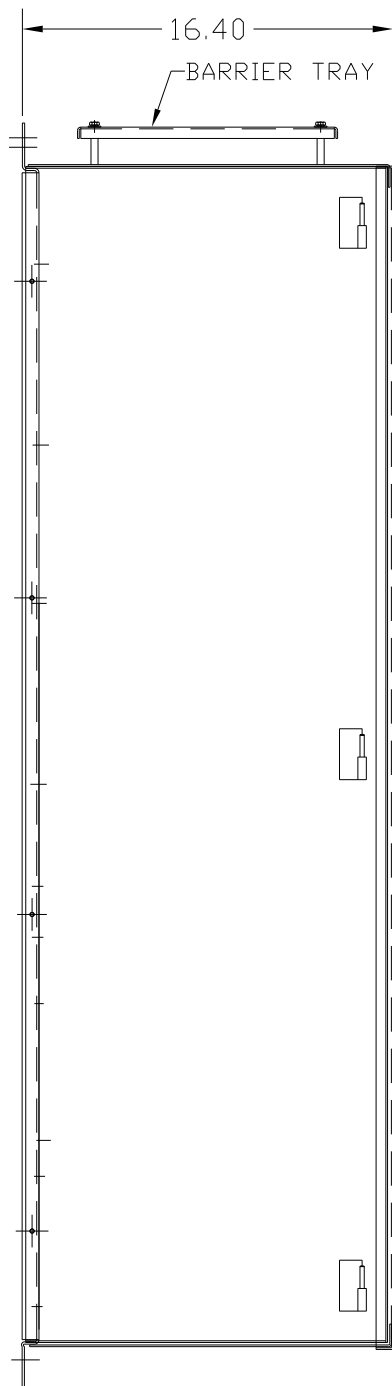
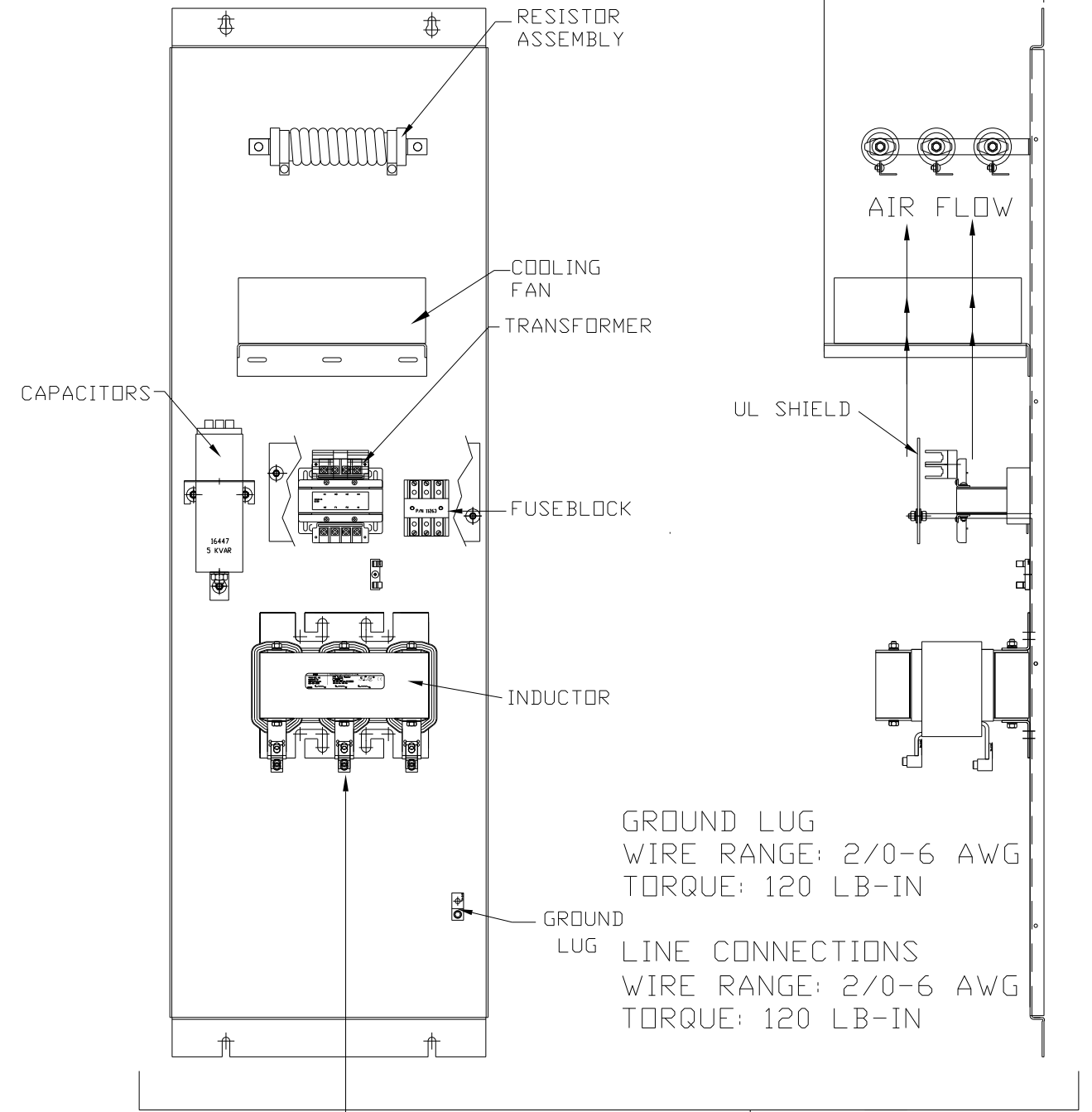


# KMG65A01A

APPROX WEIGHT: 244LBS



FOR SCHEMATIC SEE DRAWING P/N 24281-3A



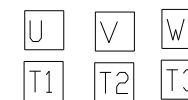
GROUND LUG  
WIRE RANGE: 2/0-6 AWG  
TORQUE: 120 LB-IN

LINE CONNECTIONS  
WIRE RANGE: 2/0-6 AWG  
TORQUE: 120 LB-IN

SUGGESTED LOCATION FOR CUSTOMER INPUT/OUTPUT

ENCLOSURE NOT SHOWN

CUSTOMER CONNECTIONS



CUSTOMER IS RESPONSIBLE FOR PROPER INSTALLATION OF ASSEMBLY IN ACCORDANCE WITH LOCAL AND NATIONAL CODES.

KMG HIGH PERFORMANCE OUTPUT FILTER

PART NUMBER: KMG65A01A

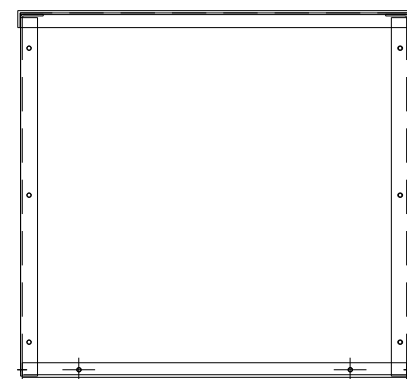
FLA: 65                      DRAWING#: 104356DG

SYSTEM VOLTAGE: 480        SCHEMATIC: 24281-3A

HZ: 80

PHASE: 3

**MOTORGUARD**



				TOLERANCES (EXCEPT AS NOTED)		7878 N. 86th STREET MILWAUKEE, WI 53224	
				DECIMAL			
				.XX ± .02		Standard SineWave Filter ENCLOSED, 50HP, 65AMP, 480V	
				.XXX ± .01			
				FRACTIONAL		DRN. BY: DSW    DATE: 10/07/2010    DWG. NO. C 104356DG	
				± 1/32		SCALE: TO FIT    APRVD.	
				ANGULAR		SHT. 1 OF 1	
				± 1/2°			
NO	REVISION	DATE	BY				