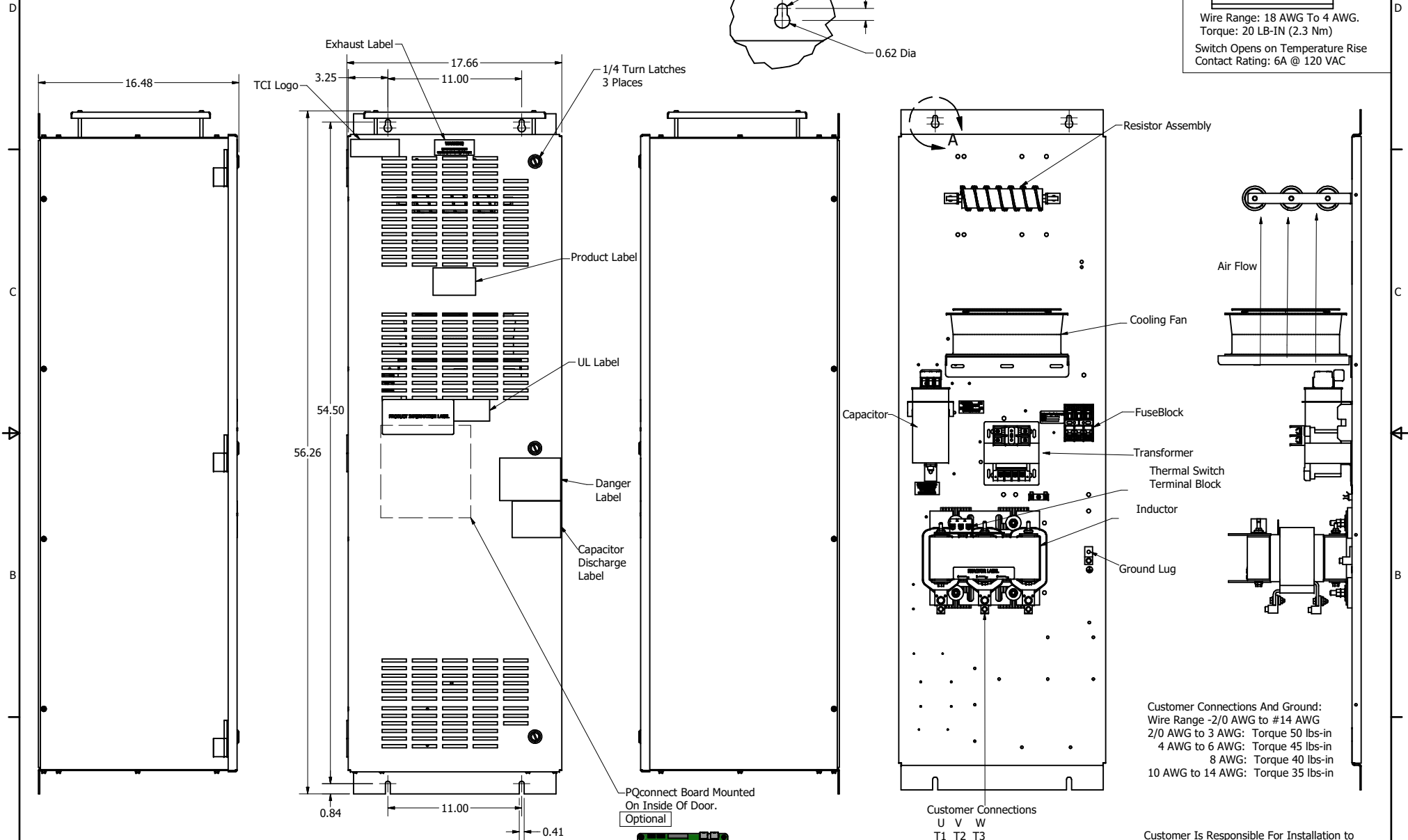
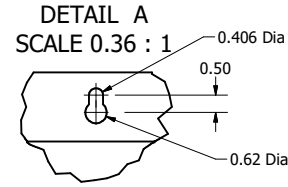
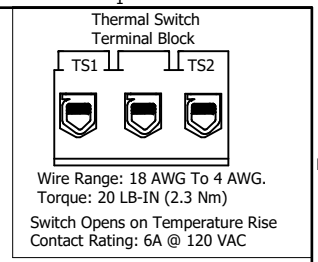


SineWave Part Number	Schematic Drawing#	Approx Weight (LBS)
KMG65A01A	24281-3A	244
KMG65A01P	24281-3P	245

HorsePower (HP)	kVar	Max Amps	Voltage (V)	HZ	Phase
50	5	65	480	60	3



Customer Connections And Ground:
 Wire Range -2/0 AWG to #14 AWG
 2/0 AWG to 3 AWG: Torque 50 lbs-in
 4 AWG to 6 AWG: Torque 45 lbs-in
 8 AWG: Torque 40 lbs-in
 10 AWG to 14 AWG: Torque 35 lbs-in

Customer Is Responsible For Installation to Meet All National And Local Electrical Codes.

Material(s) Shall be RoHS Compliant

TCI, LLC CLAIMS PROPRIETARY RIGHTS IN THE MATERIAL HEREIN DISCLOSED. IT IS SUPPLIED WITHOUT PREJUDICE TO ANY PATENT RIGHTS OF TCI AND MAY NOT BE REPRODUCED OR USED TO MANUFACTURE ANYTHING SHOWN THEREIN WITHOUT WRITTEN PERMISSION FROM TCI.

TOLERANCES (EXCEPT AS NOTED)			
	DECIMAL		
	.XX ± .25		
	.XXX ± .10		
	FRACTIONAL		
	± 1/16		
	ANGULAR		
	± 1°		

TCI W132 N10611 Grant Drive
 Germantown, WI 53022

KMG65A01-, SineWave Filter
 Enclosed Type 1, 50HP, 480V

DRN BY: DSW DATE: 10/07/2014 104356DG
 SCALE: 1/5.5 REVISED: CSE SHEET 1 OF 1

NO	REVISION	DATE	BY
C	Add PQconnect Board	6/17/2020	DSW