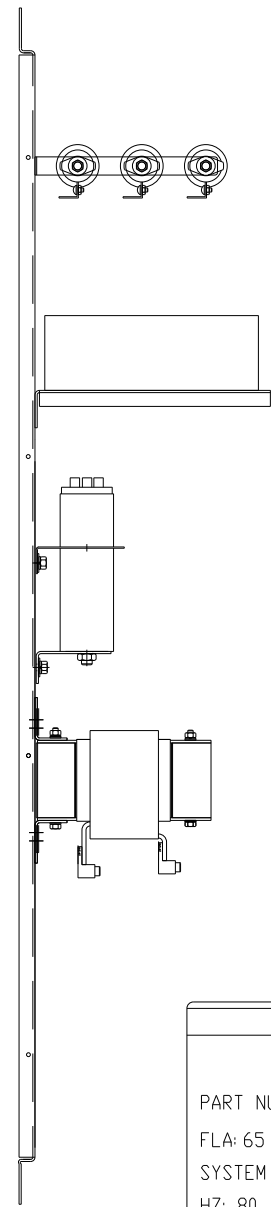


# KMG65A00A

APPROX WEIGHT: 159LBS

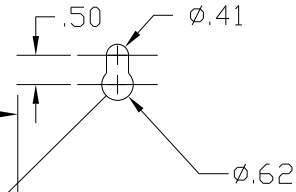
FOR SCHEMATIC SEE DRAWING P/N 24281-3A



RESISTOR ASSEMBLY

COOLING FAN

CAPACITORS



54.50

52.00

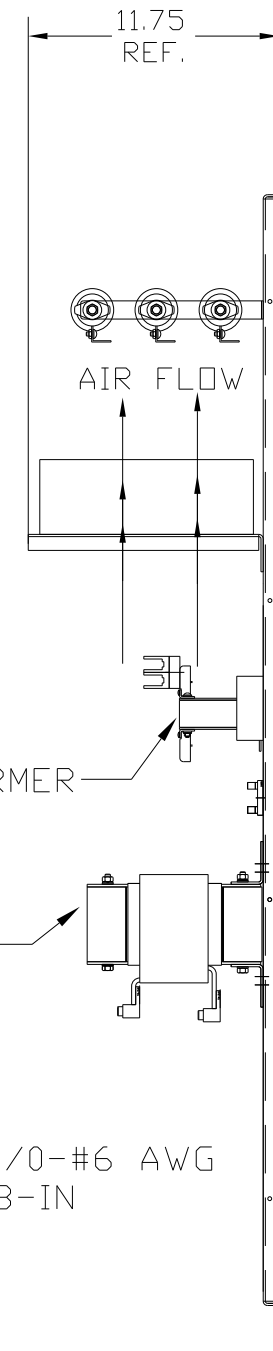
56.00

FUSEBLOCK

TRANSFORMER

INDUCTOR

GROUND LUG  
WIRE RANGE: 2/0-#6 AWG  
TORQUE: 120 LB-IN



KMG HIGH PERFORMANCE OUTPUT FILTER

PART NUMBER: KMG65A00A

FLA: 65

SYSTEM VOLTAGE: 480

HZ: 80

PHASE: 3

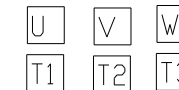
DRAWING#: 104334DG

SCHEMATIC: 24281-3A

**MOTORGUARD**



CUSTOMER INPUT/OUTPUT



CUSTOMER CONNECTIONS  
WIRE RANGE: 2/0-#6 AWG  
TORQUE: 120 LB-IN

CUSTOMER IS RESPONSIBLE FOR PROPER COOLING OF COMPONENTS IN CUSTOMERS ASSEMBLY

CUSTOMER IS RESPONSIBLE FOR PROPER INSTALLATION OF ASSEMBLY IN ACCORDANCE WITH LOCAL AND NATIONAL CODES.

NO	REVISION	DATE	BY

TOLERANCES (EXCEPT AS NOTED)
DECIMAL
.XX ± .02
.XXX ± .01
FRACTIONAL
± 1/32
ANGULAR
± 1/2°

**TGI** 7878 N. 86th STREET  
MILWAUKEE, WI 53224

Standard, SineWave Filter  
Open, 50HP, 65AMP, 480V

DRN. BY	DATE	DWG. NO.
DSW	10/04/2010	B 104334DG
SCALE	APRVD.	SHT. 1 OF 1
TO FIT		