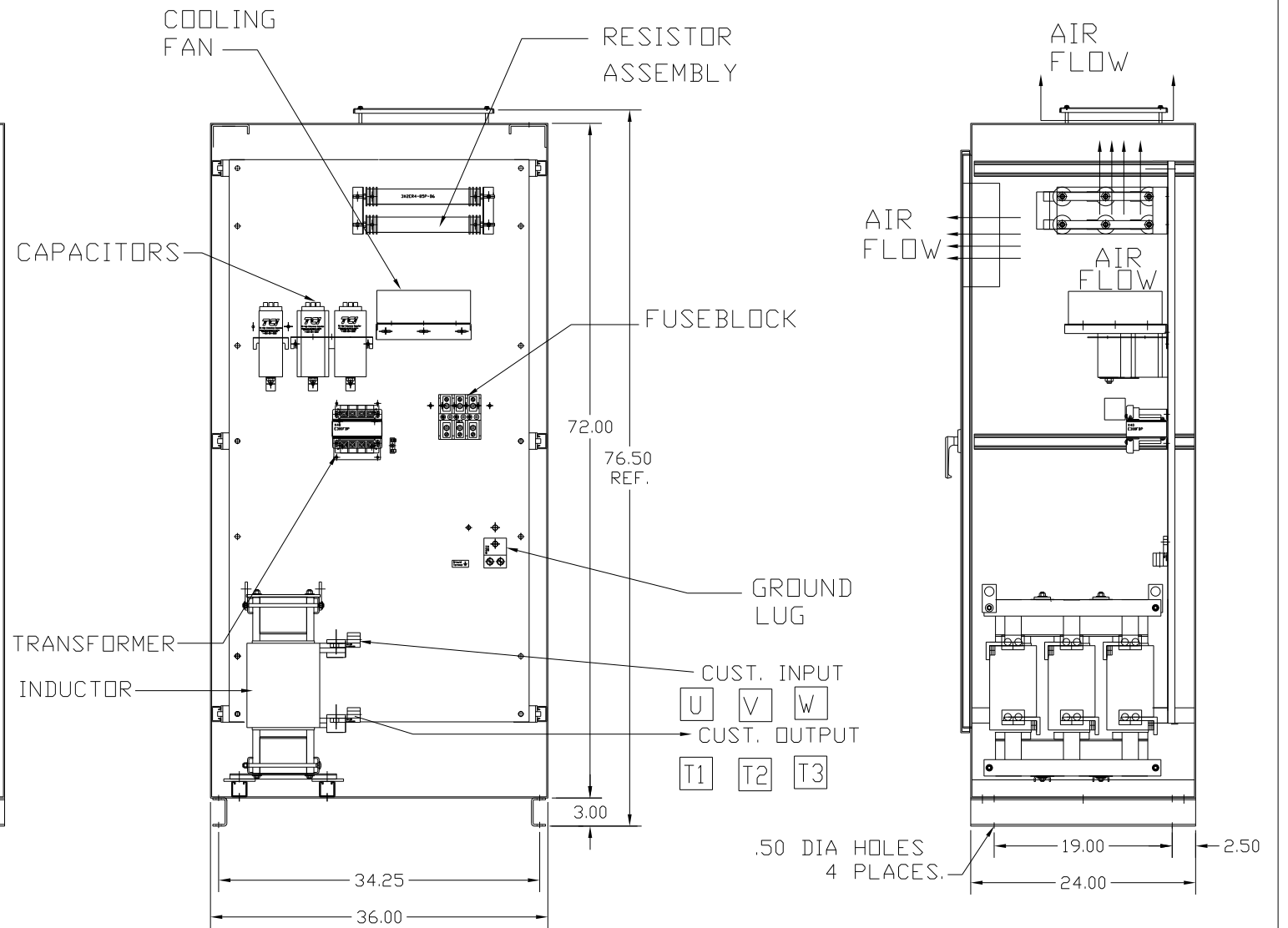
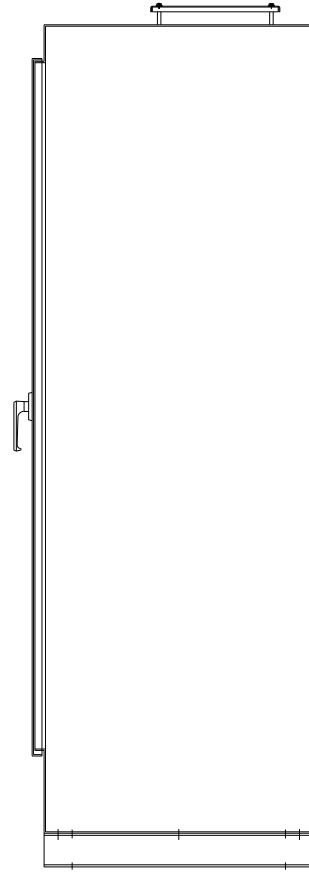
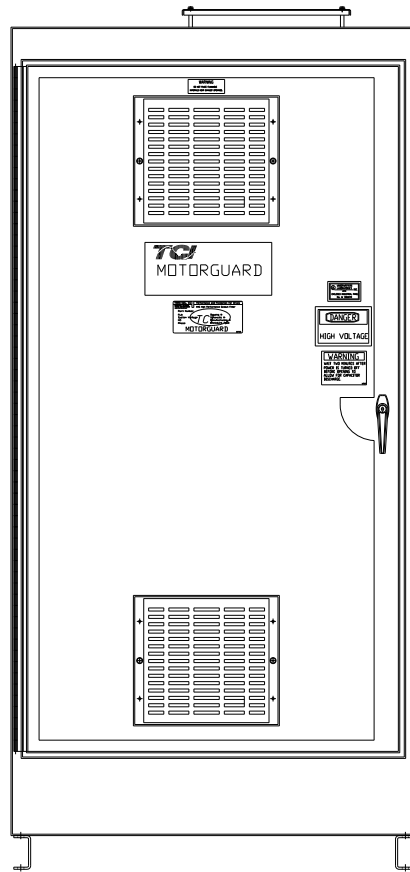
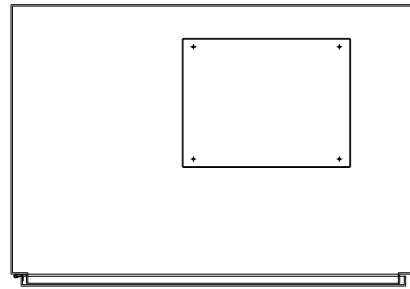


KMG600A01A
 APPROX WEIGHT: 974LBS

SCHEMATIC SEE DRAWING P/N 24281-3A

GROUND LUG
 WIRE RANGE: (2)600MCM-#2 AWG
 TORQUE: 500 LB-IN

LINE CONNECTIONS
 WIRE RANGE: (2)600MCM-#2 AWG
 TORQUE: 500 LB-IN



KMG HIGH PERFORMANCE OUTPUT FILTER

PART NUMBER: KMG600A01A
 FLA: 600
 SYSTEM VOLTAGE: 480
 HZ: 80
 PHASE: 3

DRAWING#: 104367DG
 SCHEMATIC: 24281-3A

MOTORGUARD

CUSTOMER IS RESPONSIBLE FOR PROPER
 INSTALLATION OF ASSEMBLY IN ACCORDANCE
 WITH LOCAL AND NATIONAL CODES.

				TOLERANCES (EXCEPT AS NOTED)	7878 N. 86th STREET MILWAUKEE, WI 53224 Standard, SineWave Filter ENCLOSED, 500HP, 600AMP, 480V
				DECIMAL	
				.XX ± .02 .XXX ± .01	
				FRACTIONAL ± 1/32	
				ANGULAR ± 1/2°	DRN. BY: DSW SCALE: TO FIT DATE: 10/07/2010 APRVD.
NO	REVISION	DATE	BY		DWG. NO. 104367DG SHT. 1 OF 1