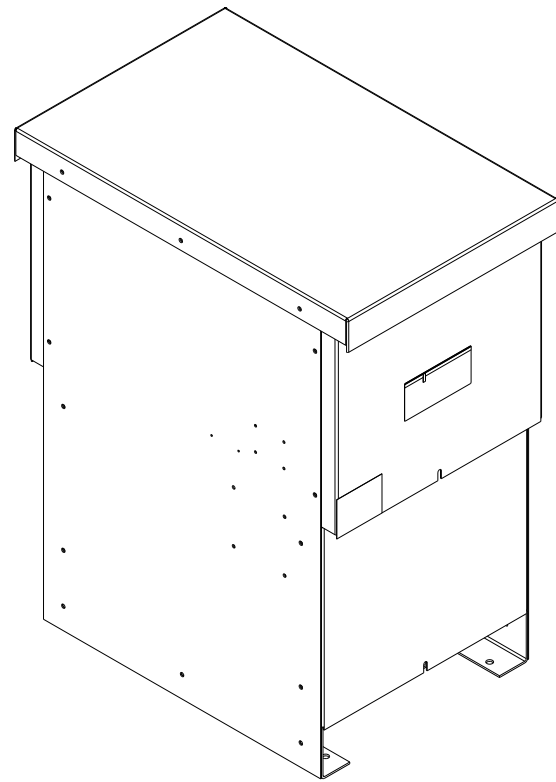


GENERAL PURPOSE, 1/3R, COLOR: GREY.

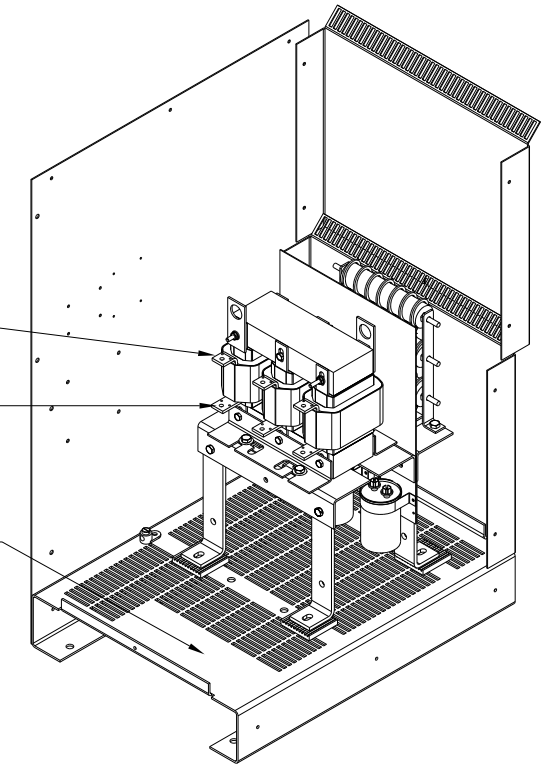
GROUND LUG 209 LBS : APPROX WEIGHT.
 WIRE RANGE: 1/0-14 AWG
 TORQUE: 200 LB-IN



KMG HIGH PERFORMANCE OUTPUT FILTER
 PART NUMBER: KMG45CG010000
 FLA: 45 DRAWING#: 103935DG
 SYSTEM VOLTAGE: 600V SCHEMATIC: 26911
 HZ: 80
 PHASE: 3 ENCLOSURE TYPE: 1/3R
MOTORGUARD

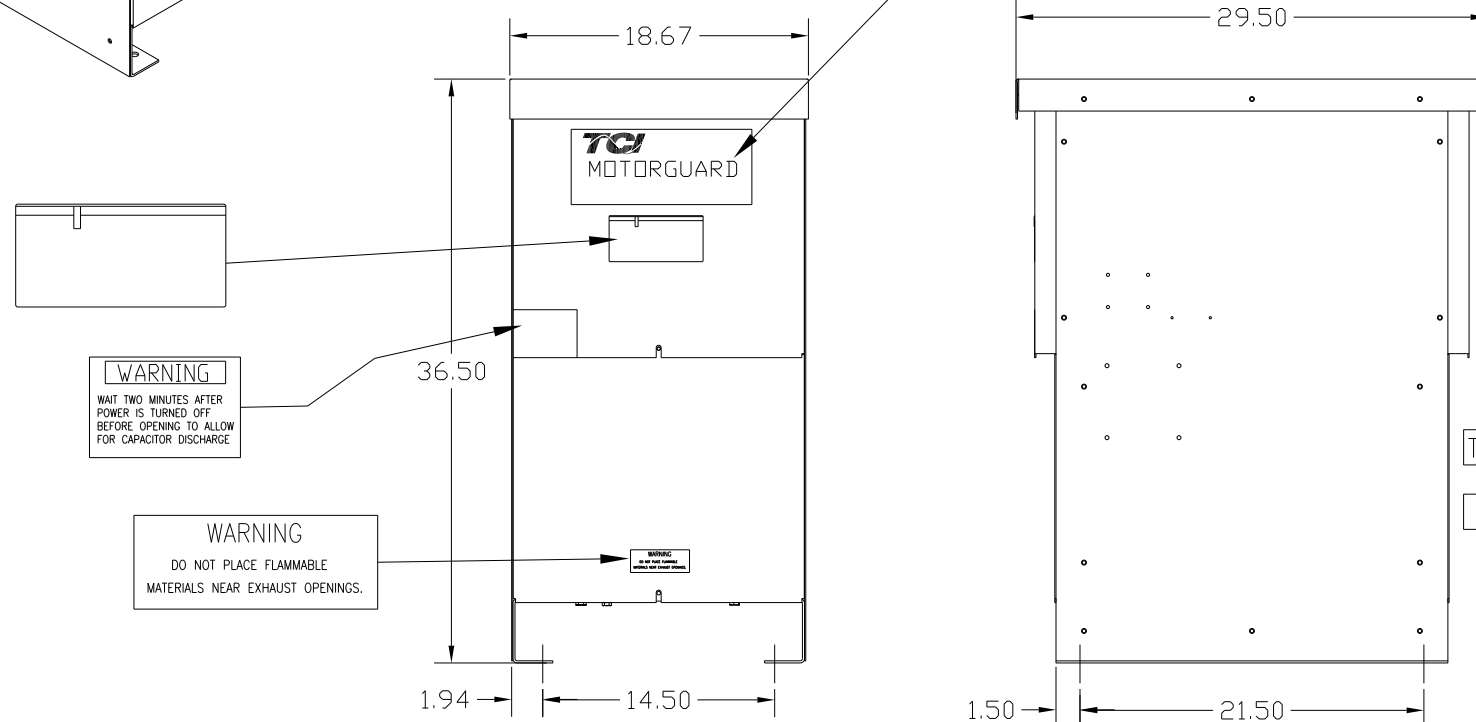
CUSTOMER CONNECTIONS
 (.28 DIA HOLES 6 PLACES.)

T1 T2 T3
 U V W



CUSTOMER WIRE ENTRANCE
 AND EXIT LOCATION.

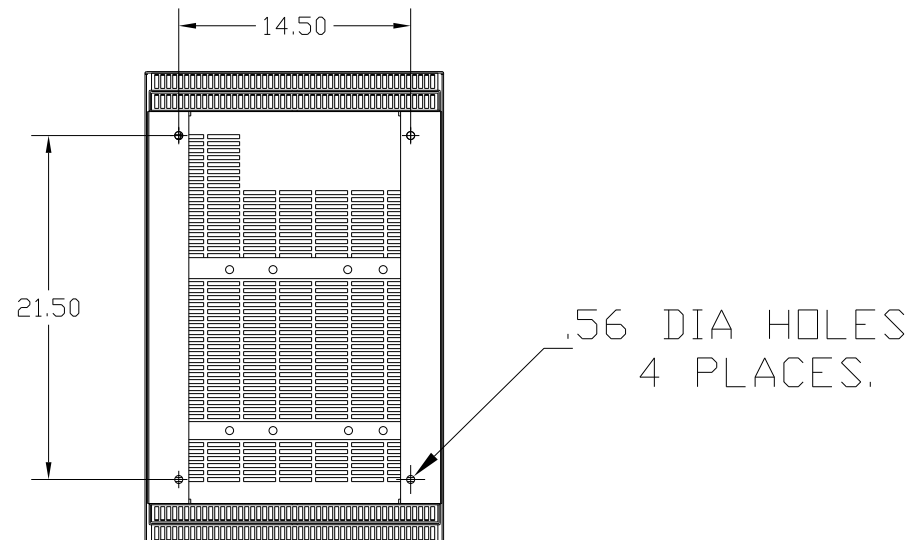
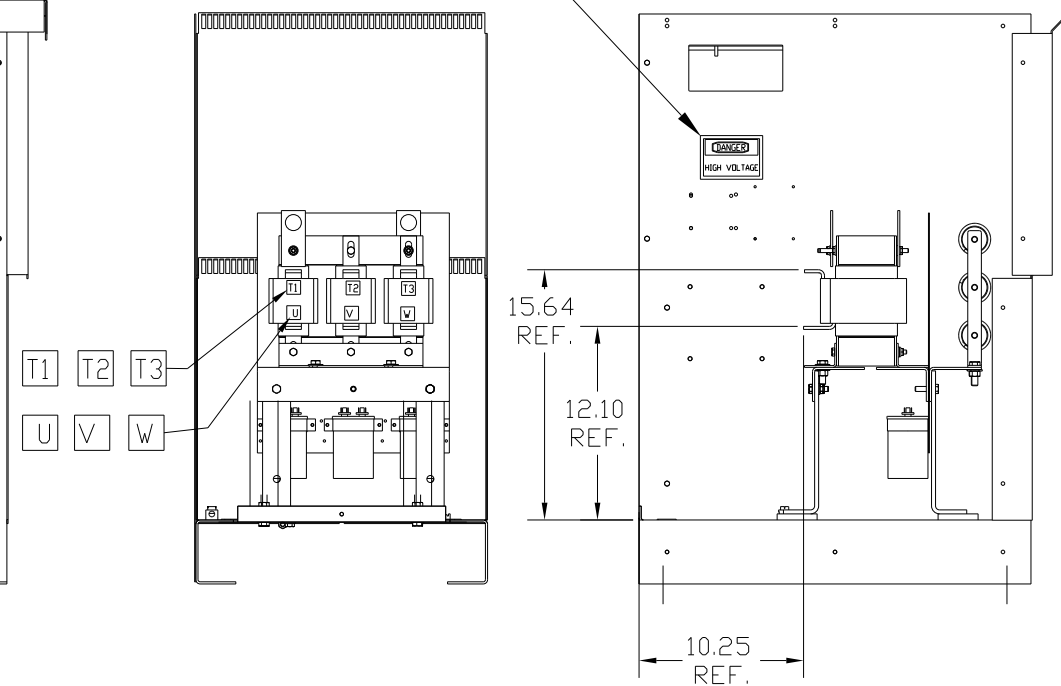
TCI
 MOTORGUARD



WARNING
 WAIT TWO MINUTES AFTER
 POWER IS TURNED OFF
 BEFORE OPENING TO ALLOW
 FOR CAPACITOR DISCHARGE

WARNING
 DO NOT PLACE FLAMMABLE
 MATERIALS NEAR EXHAUST OPENINGS.

DANGER
 HIGH VOLTAGE



PART NUMBER: KMG45CG010000
 FOR SCHEMATIC SEE DRAWING # 26911.

CUSTOMER IS RESPONSIBLE FOR INSTALLATION
 TO MEET ALL NATIONAL AND LOCAL ELECTRICAL CODES.

| | | | | | |
|----|----------|---------------------------------|----|---|--|
| | | TOLERANCES (EXCEPT AS NOTED) | | TCI 7878 N. 86th STREET MILWAUKEE, WI 53224 | |
| | | DECIMAL | | KMG, LRC FILTER STANDARD 45 AMP 600/3/80, 1/3R | |
| | | .XX ±.03 | | DRN. BY DSW DATE 1/23/09 DWG. NO. 103935DG | |
| | | .XXX±.01 | | SCALE TO FIT APPRVD. C | |
| | | FRACTIONAL | | SHT.1 OF1 | |
| | | ± 1/32 | | | |
| | | ANGULAR | | | |
| | | ± 1/2° | | | |
| NO | REVISION | DATE | BY | | |