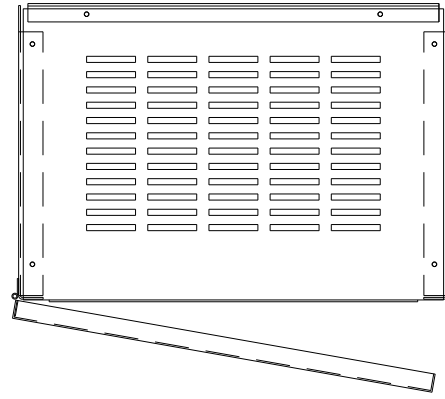
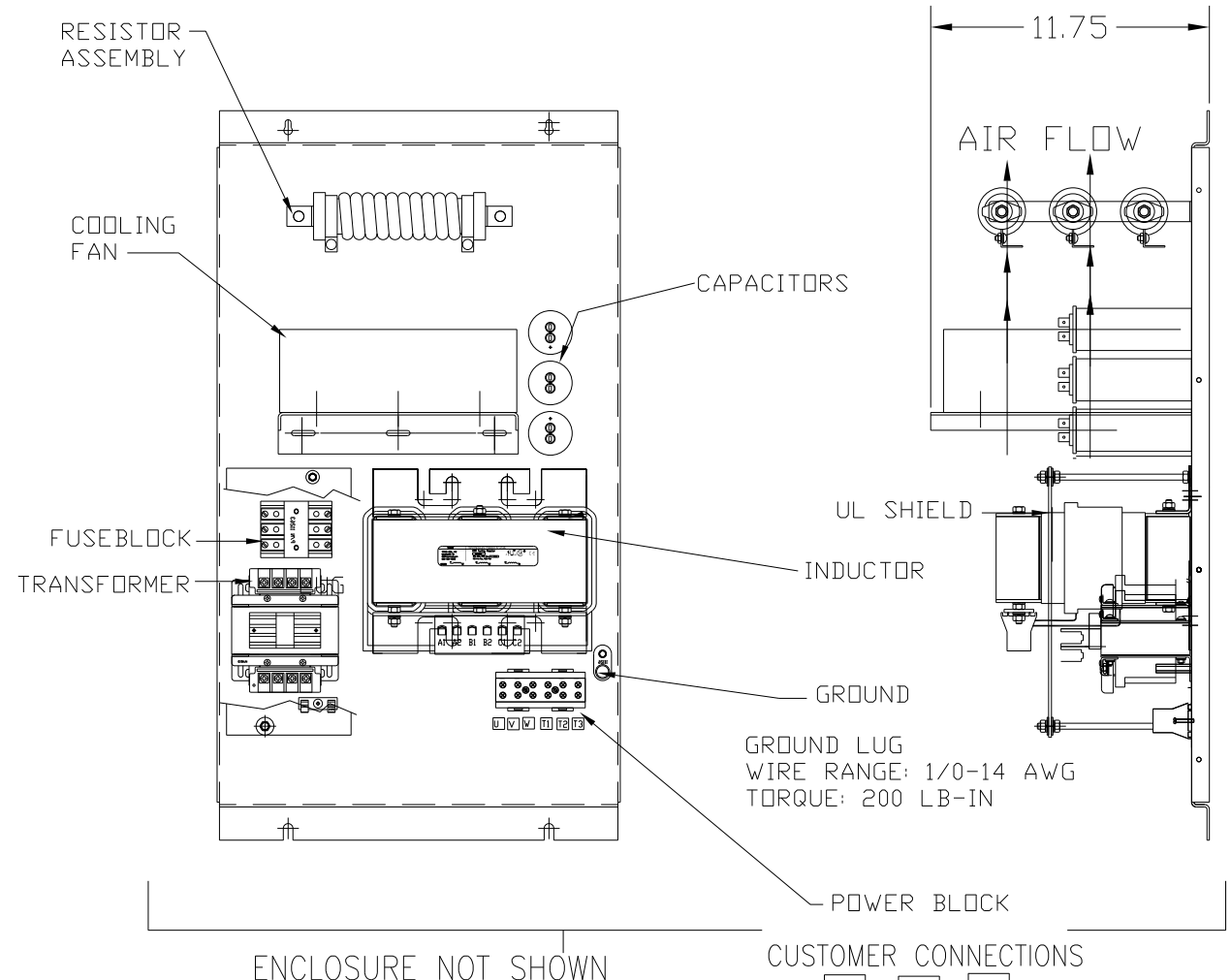
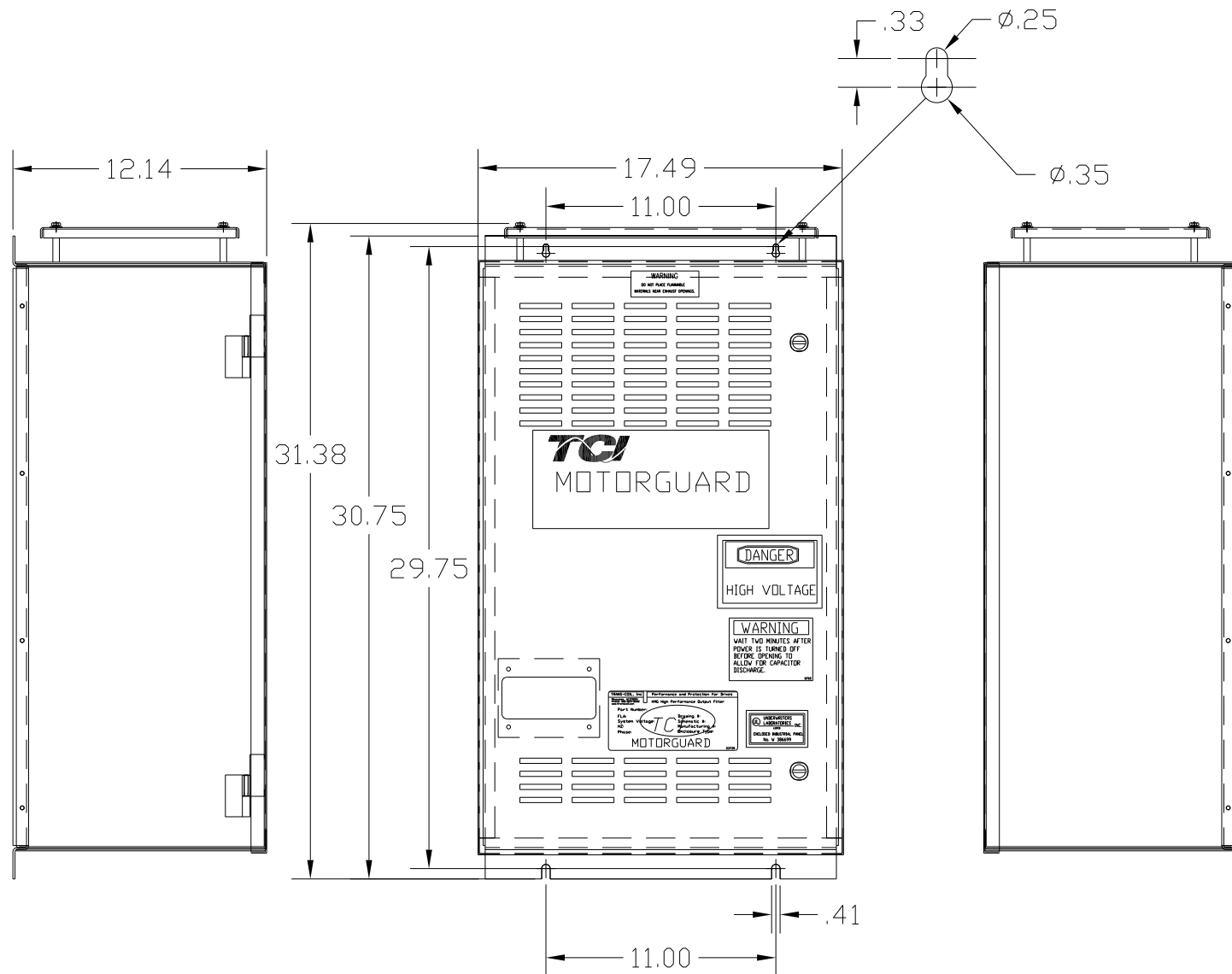


KMG45C01A  
 APPROX WEIGHT: 173LBS



KMG HIGH PERFORMANCE OUTPUT FILTER  
 PART NUMBER: KMG45C01A  
 FLA: 45  
 SYSTEM VOLTAGE: 600  
 HZ: 80  
 PHASE: 3  
 DRAWING#: 104441DG  
 SCHEMATIC: 24281-11A  
 MOTORGUARD



SCHEMATIC SEE DRAWING P/N 24281-11A

CUSTOMER CONNECTIONS  
 U V W  
 T1 T2 T3  
 LINE CONNECTIONS  
 WIRE RANGE: 1 AWG THRU 4 AWG 35 LB-IN  
 6 AWG THRU 14 AWG 30 LB-IN  
 16 AWG THRU 22 AWG 25 LB-IN

CUSTOMER IS RESPONSIBLE FOR PROPER  
 INSTALLATION OF ASSEMBLY IN ACCORDANCE  
 WITH LOCAL AND NATIONAL CODES.

				TOLERANCES (EXCEPT AS NOTED)		7878 N. 86th STREET MILWAUKEE, WI 53224 Standard, SineWave Filter ENCLOSED 40HP, 45AMP, 600V
				DECIMAL		
				.XX ±.02		
				.XXX ±.01		
				FRACTIONAL		
				± 1/32		
				ANGULAR		
				± 1/2°		
NO	REVISION	DATE	BY	SCALE	TO FIT	DRN. BY: DSW DATE: 10/14/2010 APRVD: [Signature] DWG. NO.: 104441DG SHT. 1 OF 1