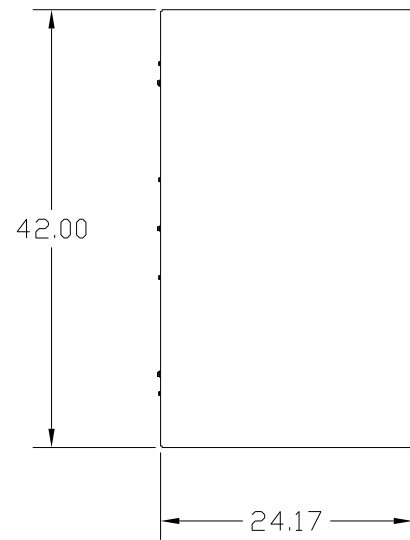


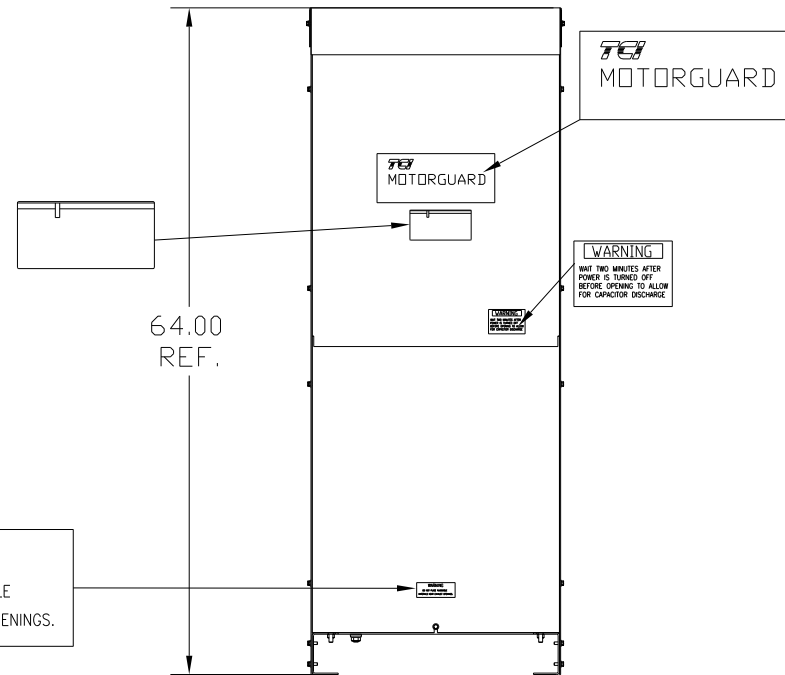
GENERAL PURPOSE, 1/3R, COLOR: GREY.

APPROX WT: 675LBS

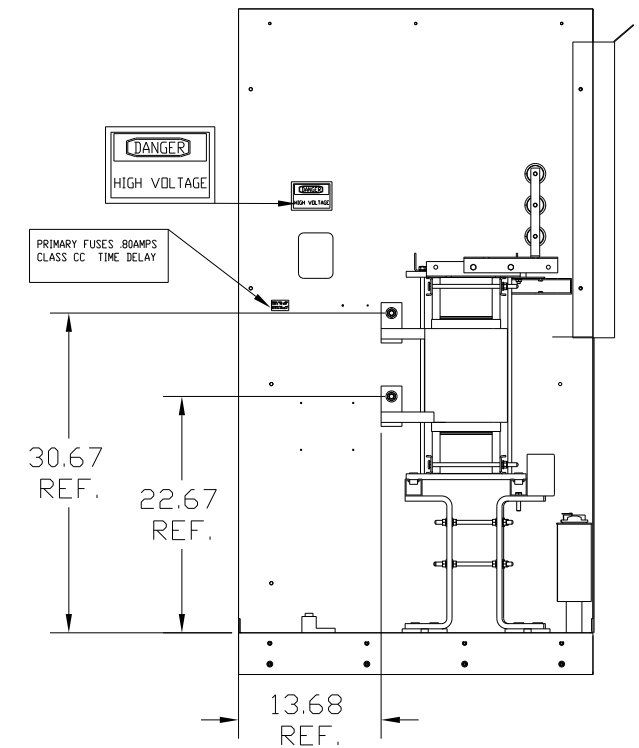
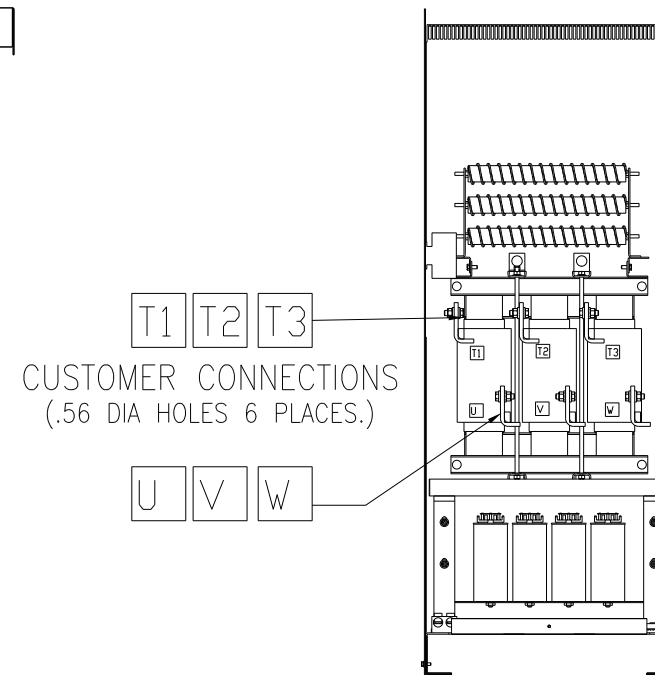
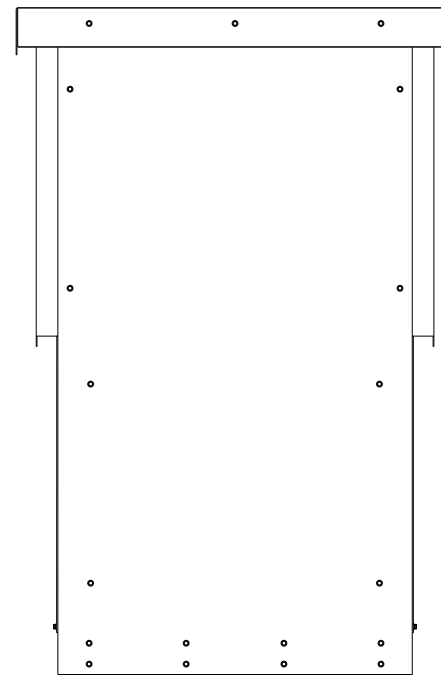


KMG HIGH PERFORMANCE OUTPUT FILTER
 PART NUMBER: KMG420CG010000
 FLA: 420 DRAWING#: 103946DG
 SYSTEM VOLTAGE: 600V SCHEMATIC: 26941
 HZ: 80
 PHASE: 3 ENCLOSURE TYPE: 1/3R
MOTORGUARD

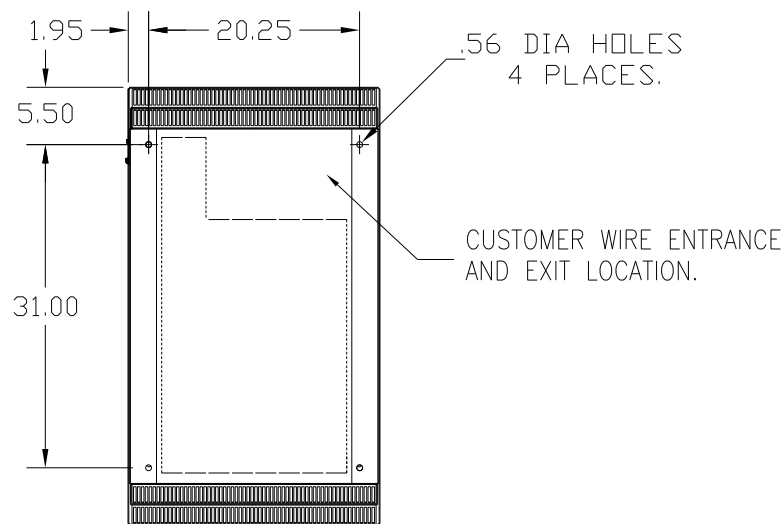
NUMBER: KMG420CG0100000
 FOR SCHEMATIC SEE DWG# 26941




WARNING
 DO NOT PLACE FLAMMABLE MATERIALS NEAR EXHAUST OPENINGS.



GROUND LUG
 WIRE RANGE: TWO 350MCM-4
 TORQUE: 275 LB-IN



CUSTOMER IS RESPONSIBLE FOR INSTALLATION TO MEET ALL NATIONAL AND LOCAL ELECTRICAL CODES.

				TOLERANCES (EXCEPT AS NOTED)	 7878 N. 86th STREET MILWAUKEE, WI 53224
				DECIMAL	
				.XX ± .02 .XXX ± .01	
				FRACTIONAL ± 1/32	
				ANGULAR ± 1/2°	DRN. BY DSW DATE 02/05/09 DWG. NO. 103946DG SCALE TO FIT APPRVD. D
NO	REVISION	DATE	BY		SHT. 1 of 1