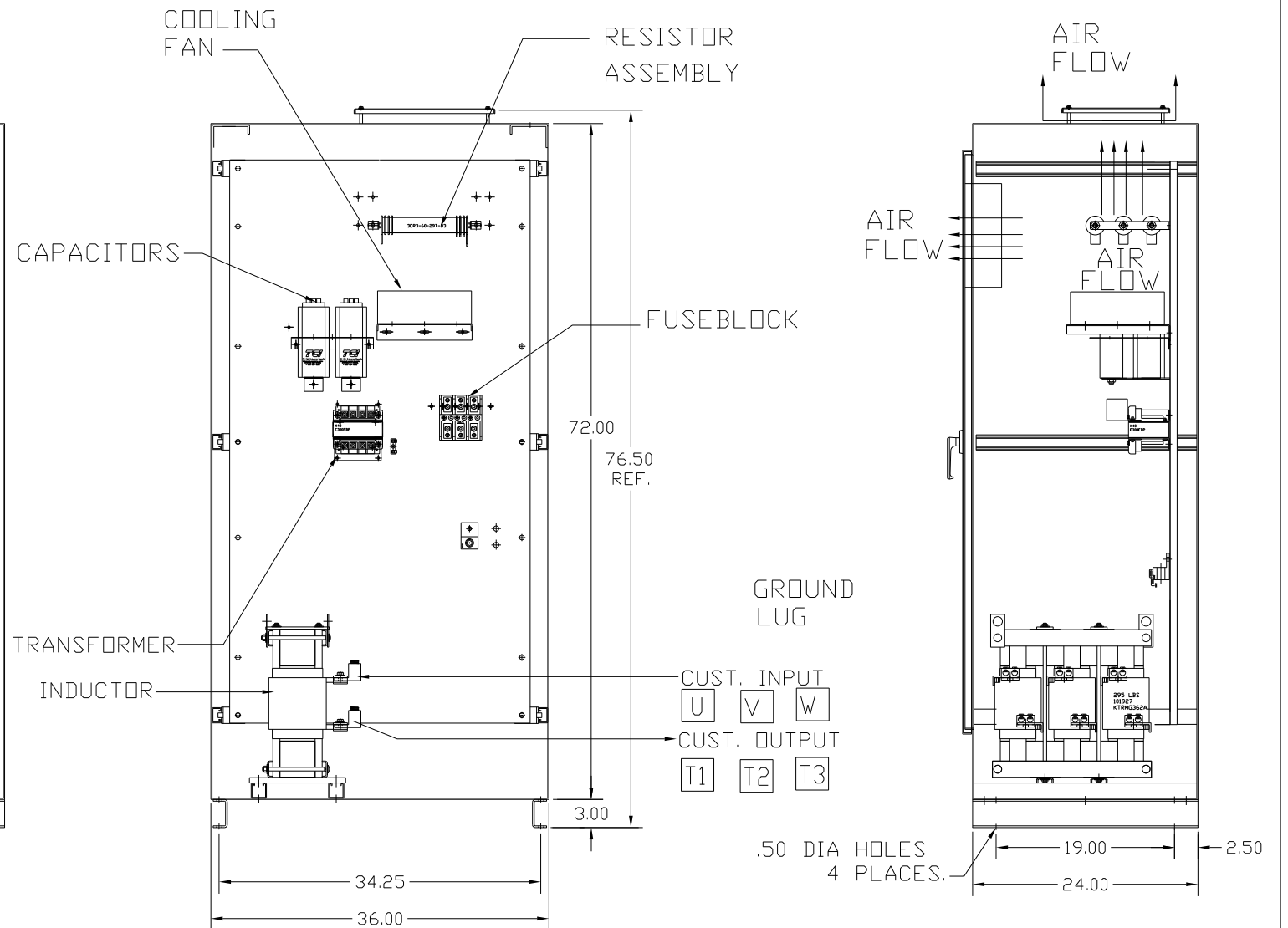
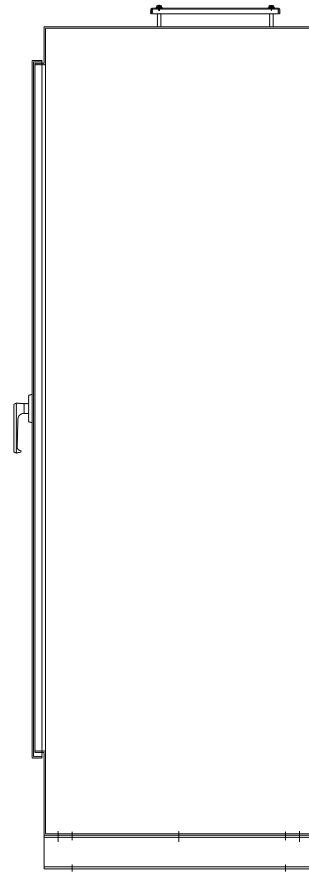
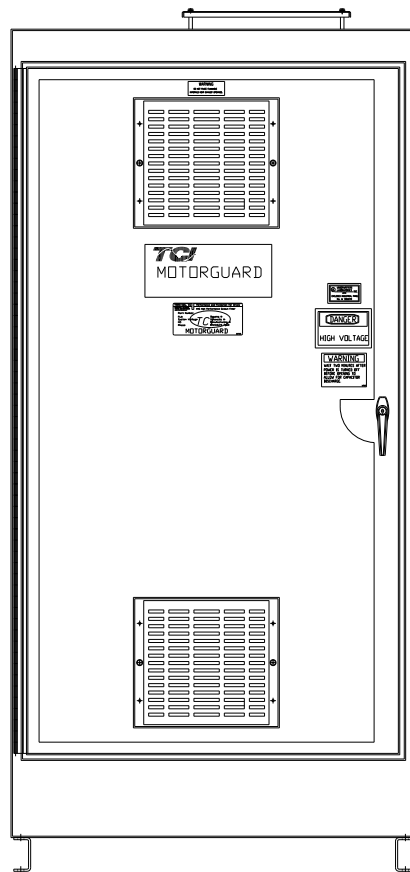
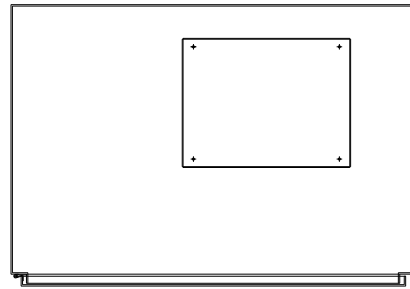


KMG362A01A
 APPROX WEIGHT: 799LBS

FOR SCHEMATIC SEE DRAWING P/N 24281-3A

GROUND LUG
 WIRE RANGE: (2)350CM-#4 AWG
 TORQUE: 275 LB-IN

LINE CONNECTIONS
 WIRE RANGE: (2)350MCM-#4 AWG
 TORQUE: 275 LB-IN



CUSTOMER IS RESPONSIBLE FOR PROPER
 INSTALLATION OF ASSEMBLY IN ACCORDANCE
 WITH LOCAL AND NATIONAL CODES.

KMG HIGH PERFORMANCE OUTPUT FILTER

PART NUMBER: KMG362A01A
 FLA: 362 DRAWING#: 104364DG
 SYSTEM VOLTAGE: 480 SCHEMATIC: 24281-3A
 HZ: 80
 PHASE: 3

MOTORGUARD

				TOLERANCES (EXCEPT AS NOTED)	7878 N. 86th STREET MILWAUKEE, WI 53224 Standard, SineWave Filter ENCLOSED, 300HP, 362AMP, 480V
				DECIMAL	
				.XX ± .02 .XXX ± .01	
				FRACTIONAL ± 1/32	
				ANGULAR ± 1/2°	DRN. BY: DSW DATE: 10/07/2010 DWG. NO.: 104364DG
NO	REVISION	DATE	BY	SCALE: TO FIT	APRVD. SHT. 1 OF 1