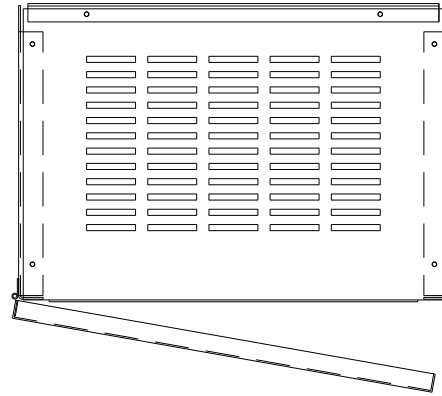


KMG30A01A

APPROX WEIGHT: 139LBS



KMG HIGH PERFORMANCE OUTPUT FILTER

PART NUMBER: KMG30A01A

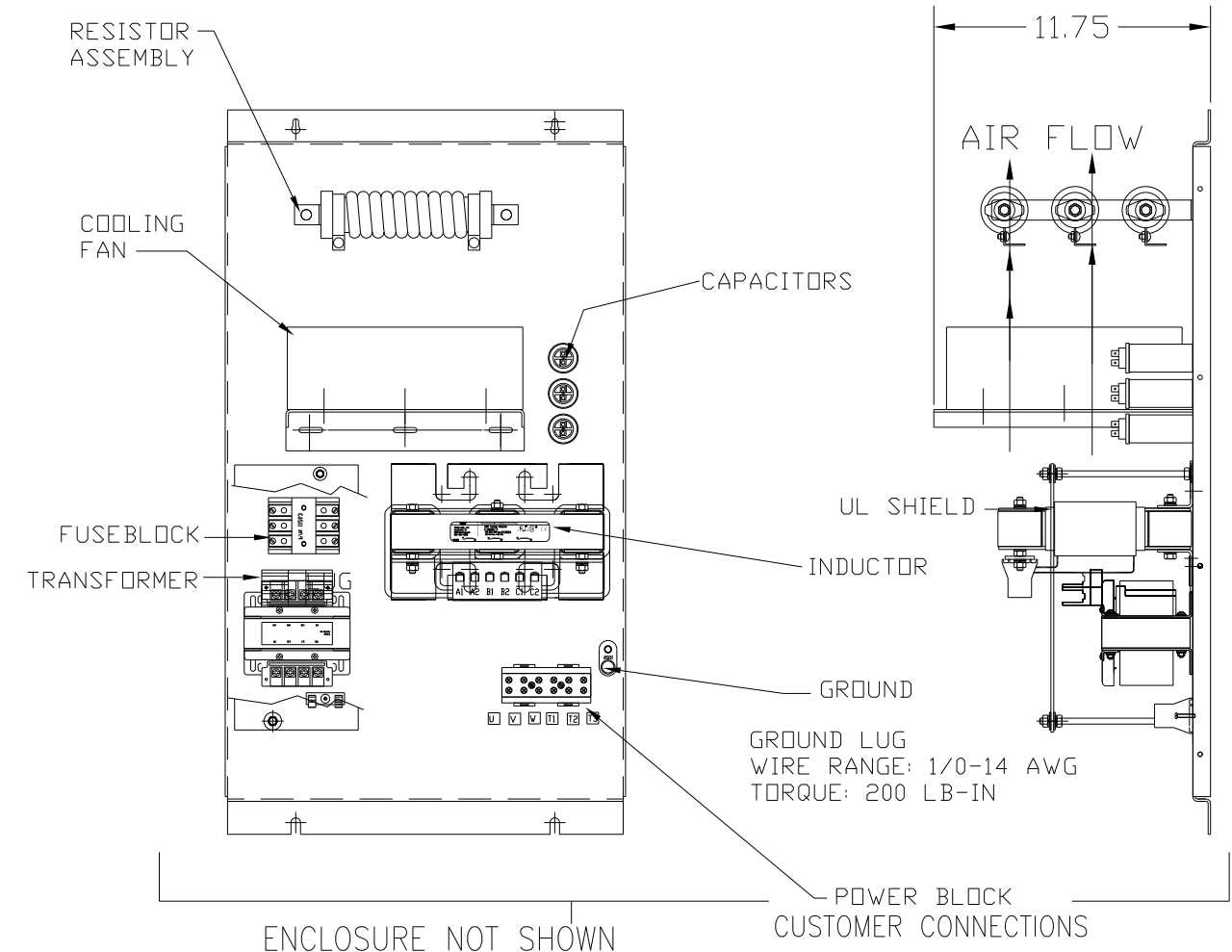
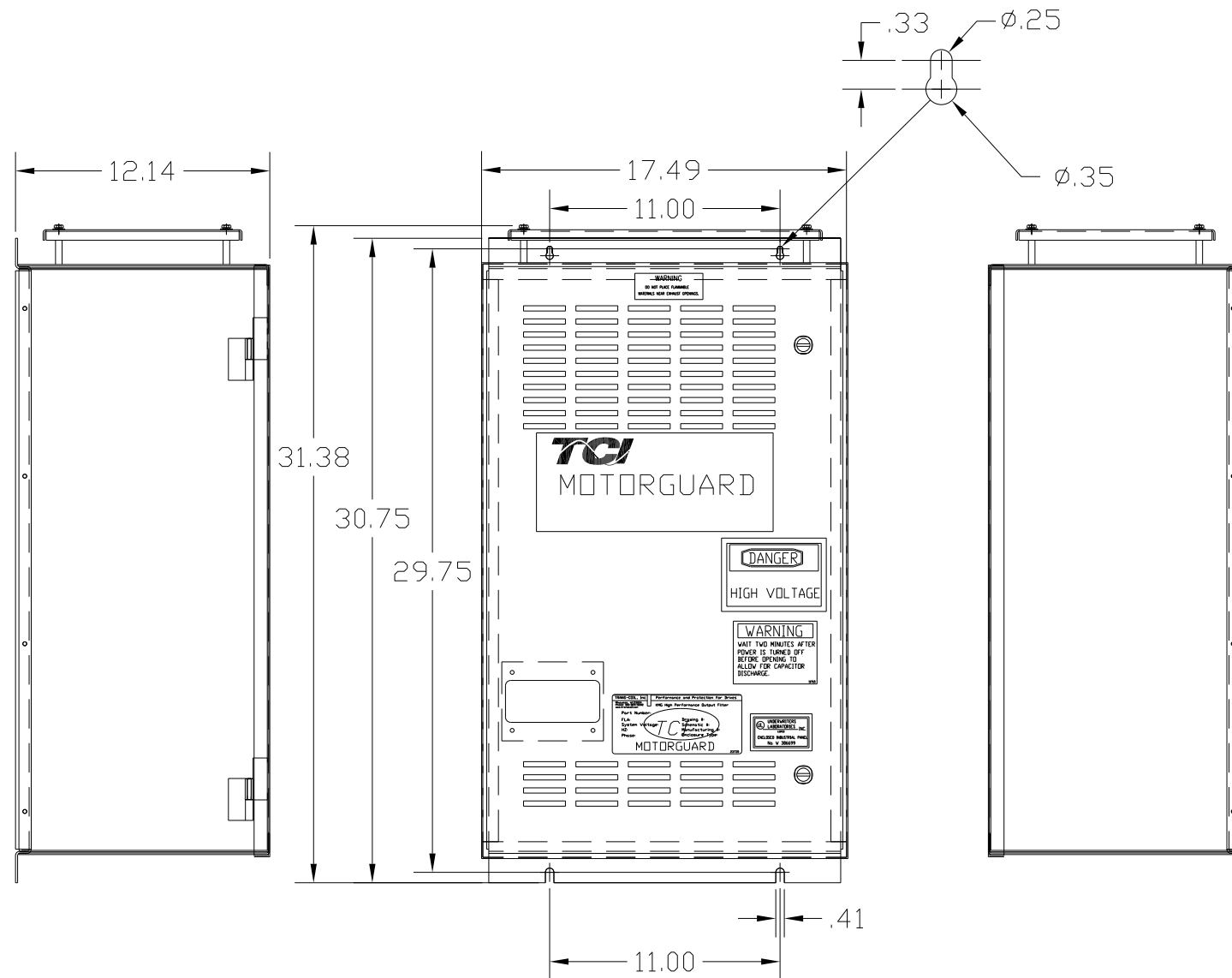
FLA: 30 DRAWING#: 104352DG

SYSTEM VOLTAGE: 480 SCHEMATIC: 24281-1A

HZ: 80

PHASE: 3

MOTORGUARD



FOR SCHEMATIC SEE DRAWING P/N 24281-1A

ENCLOSURE NOT SHOWN

POWER BLOCK CUSTOMER CONNECTIONS

U V W
T1 T2 T3

LINE CONNECTIONS
WIRE RANGE: 1 AWG THRU 4 AWG 35 LB-IN
6 AWG THRU 14 AWG 30 LB-IN
16 AWG THRU 22 AWG 25 LB-IN

CUSTOMER IS RESPONSIBLE FOR PROPER
INSTALLATION OF ASSEMBLY IN ACCORDANCE
WITH LOCAL AND NATIONAL CODES.

				TOLERANCES (EXCEPT AS NOTED): DECIMAL	7878 N. 86th STREET MILWAUKEE, WI 53224 Standard SineWave Filter ENCLOSED, 20HP, 30AMP, 480V
				.XX ± .02	
				.XXX ± .01	
				FRACTIONAL ± 1/32	
NO	REVISION	DATE	BY	ANGULAR ± 1/2°	DRN. BY: DSW DATE: 10/07/2010 DWG. NO.: 104352DG SCALE: TO FIT APRVD.: SHT. 1 OF 1