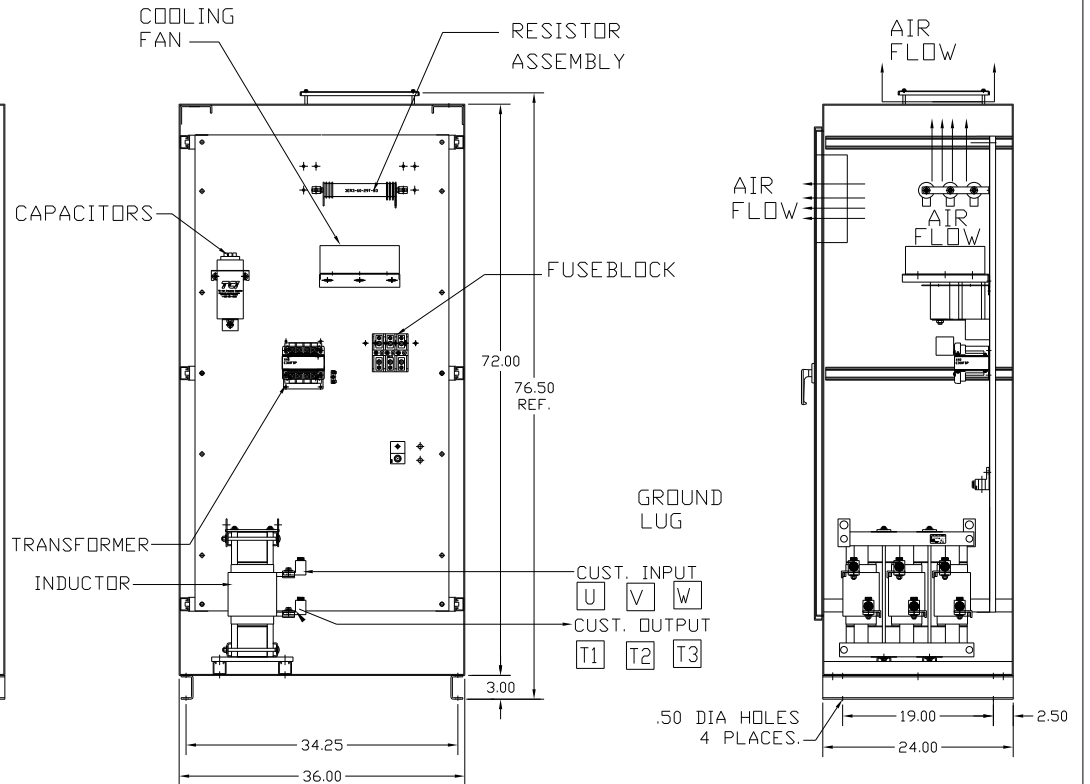
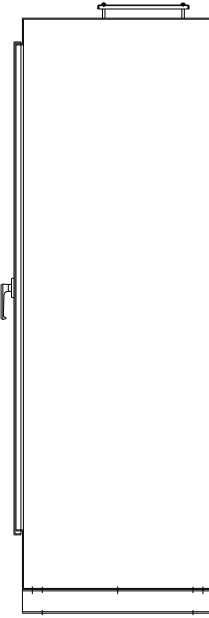
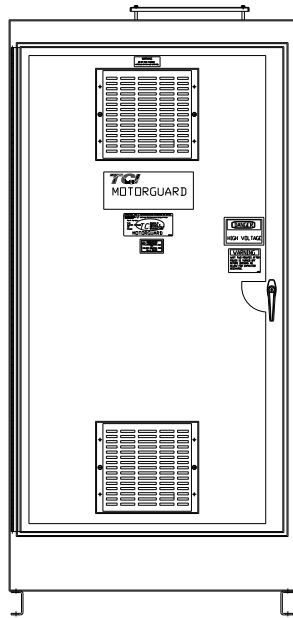
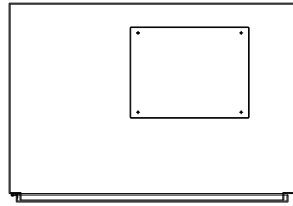


KMG305A01A
 APPROX WEIGHT: 789LBS

FOR SCHEMATIC SEE DRAWING P/N 24281-3A

GROUND LUG
 WIRE RANGE: (1)600MCM-#4 AWG
 (2)250MCM-1/0 AWG
 TORQUE: 500 LB-IN

LINE CONNECTIONS
 WIRE RANGE: (1)600MCM-#4 AWG
 (2)250MCM-1/0 AWG
 TORQUE: 500 LB-IN



CUSTOMER IS RESPONSIBLE FOR PROPER
 INSTALLATION OF ASSEMBLY IN ACCORDANCE
 WITH LOCAL AND NATIONAL CODES.

KMG HIGH PERFORMANCE OUTPUT FILTER

PART NUMBER: KMG305A01A
 FLA: 305 DRAWING#: 104363DG
 SYSTEM VOLTAGE: 480 SCHEMATIC: 24281-3A
 HZ: 60
 PHASE: 3

MOTORGUARD

		TOLERANCES (EXCEPT AS NOTED)		TCI 7878 N. 86th STREET MILWAUKEE, WI 53224
		DECIMAL		
		.XX ± .02		Standard, SineWave Filter ENCLOSED, 250HP, 305AMP, 480V
		.XXX ± .01		
		FRACTIONAL ± 1/32		
NO	REVISION	DATE	BY	DRN BY: DSW DATE: 10/07/2010 DWG NO: 104363DG SCALE: TO FIT APPROV: SHT. 1 OF 1