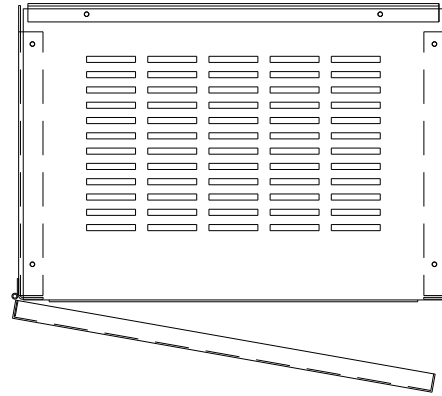


KMG28C01A

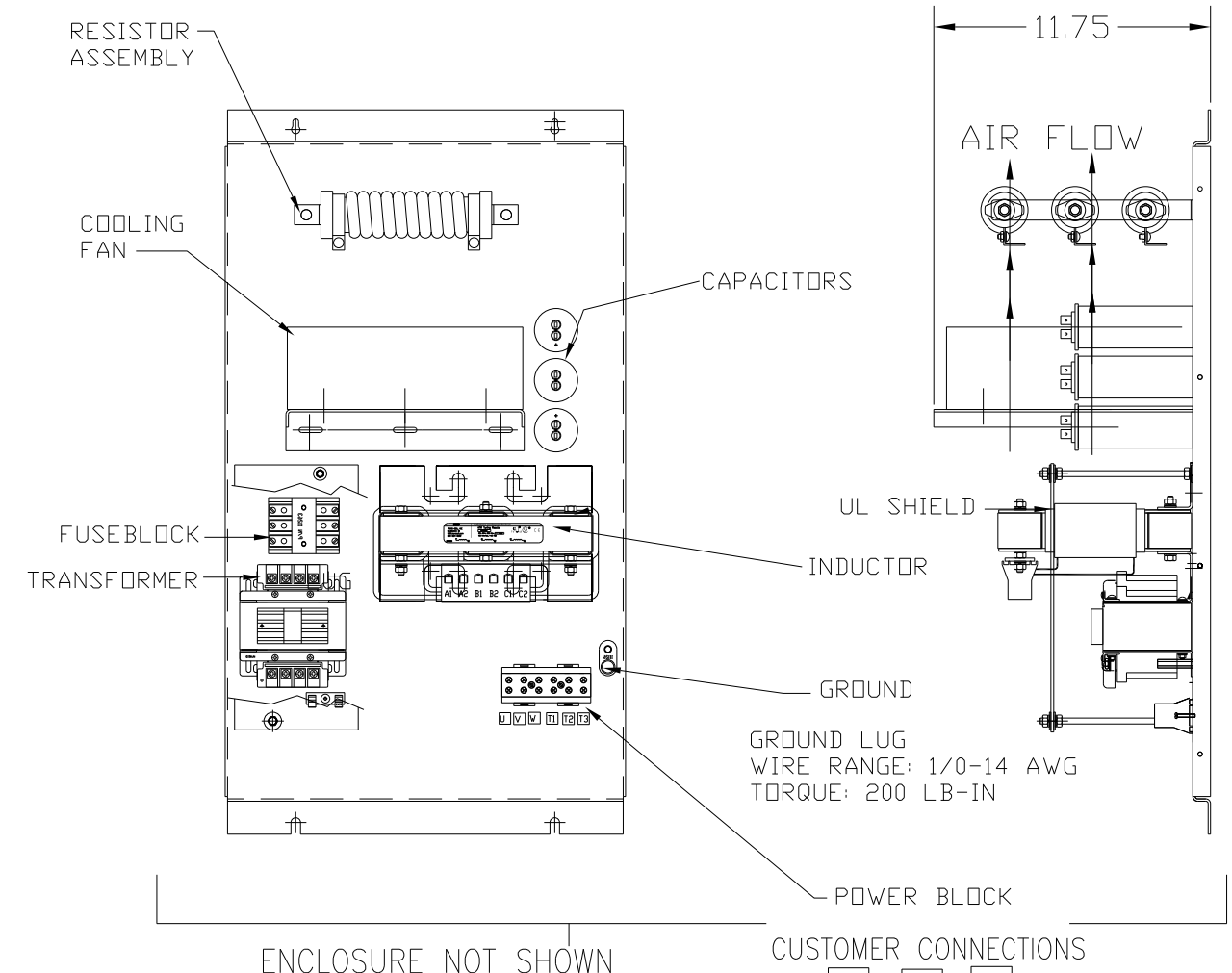
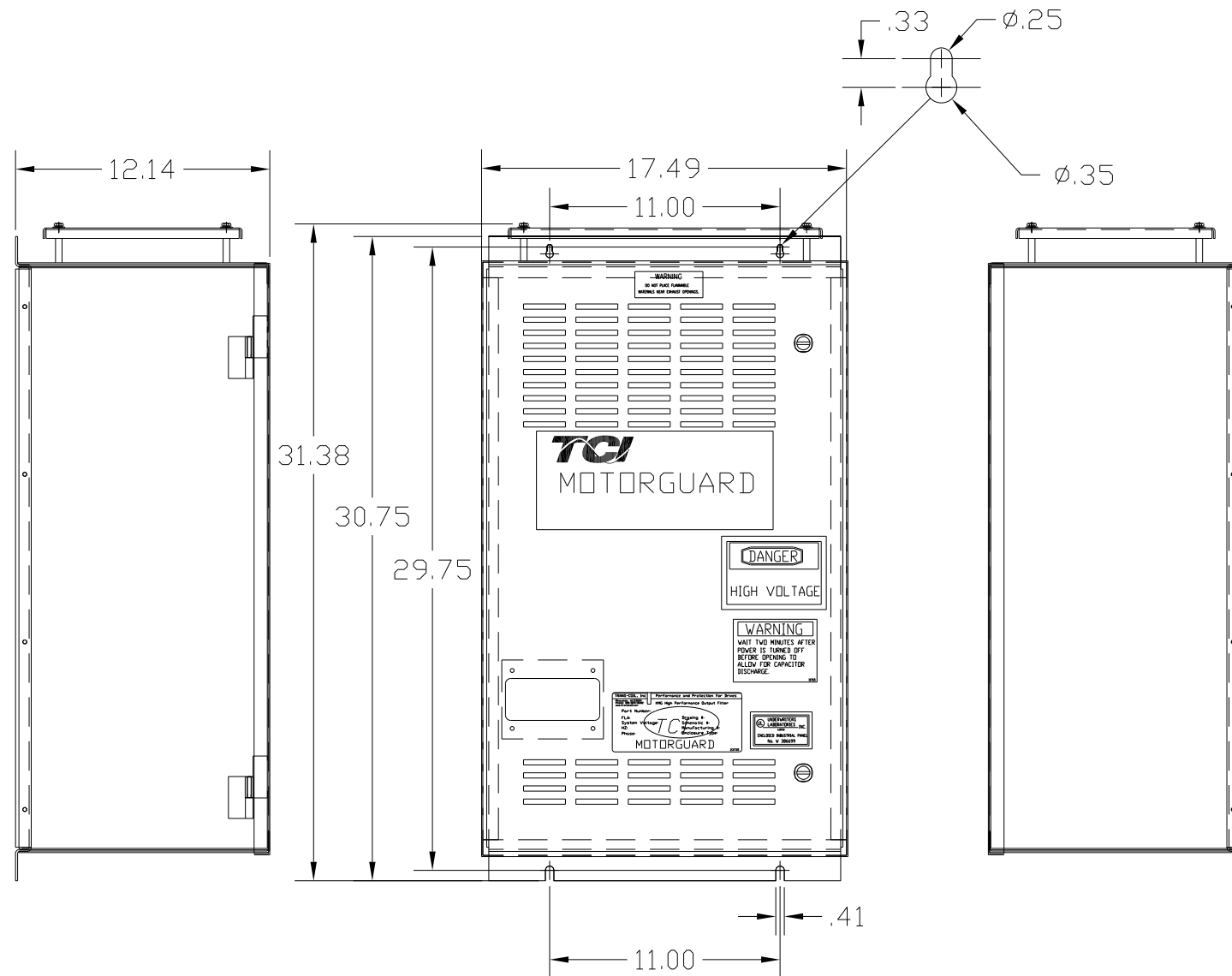
APPROX WEIGHT: 143LBS



KMG HIGH PERFORMANCE OUTPUT FILTER  
 PART NUMBER: KMG28C01A  
 FLA: 28  
 SYSTEM VOLTAGE: 600  
 HZ: 80  
 PHASE: 3

DRAWING#: 104439DG  
 SCHEMATIC: 24281-11A

MOTORGUARD



FOR SCHEMATIC SEE DRAWING P/N 24281-11A

CUSTOMER IS RESPONSIBLE FOR PROPER  
 INSTALLATION OF ASSEMBLY IN ACCORDANCE  
 WITH LOCAL AND NATIONAL CODES.

ENCLOSURE NOT SHOWN

CUSTOMER CONNECTIONS  
 U V W  
 T1 T2 T3

LINE CONNECTIONS  
 WIRE RANGE: 1 AWG THRU 4 AWG 35 LB-IN  
 6 AWG THRU 14 AWG 30 LB-IN  
 16 AWG THRU 22 AWG 25 LB-IN

				TOLERANCES (EXCEPT AS NOTED)	7878 N. 86th STREET MILWAUKEE, WI 53224
				DECIMAL	
				.XX ±.02 .XXX ±.01	
				FRACTIONAL ± 1/32	
				ANGULAR ± 1/2°	
NO	REVISION	DATE	BY	SCALE TO FIT	DRN. BY: DSW DATE: 10/14/2010 DWG. NO.: 104439DG SCALE: TO FIT APRVD: C SHT. 1 OF 1