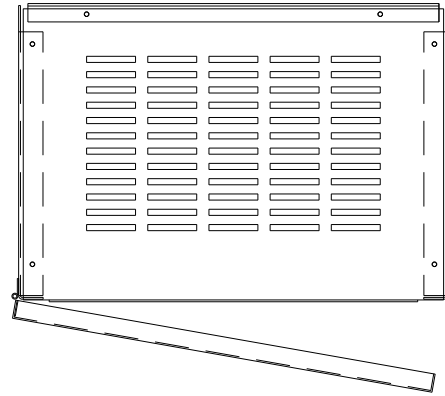


KMG25C01A
 APPROX WEIGHT: 138LBS

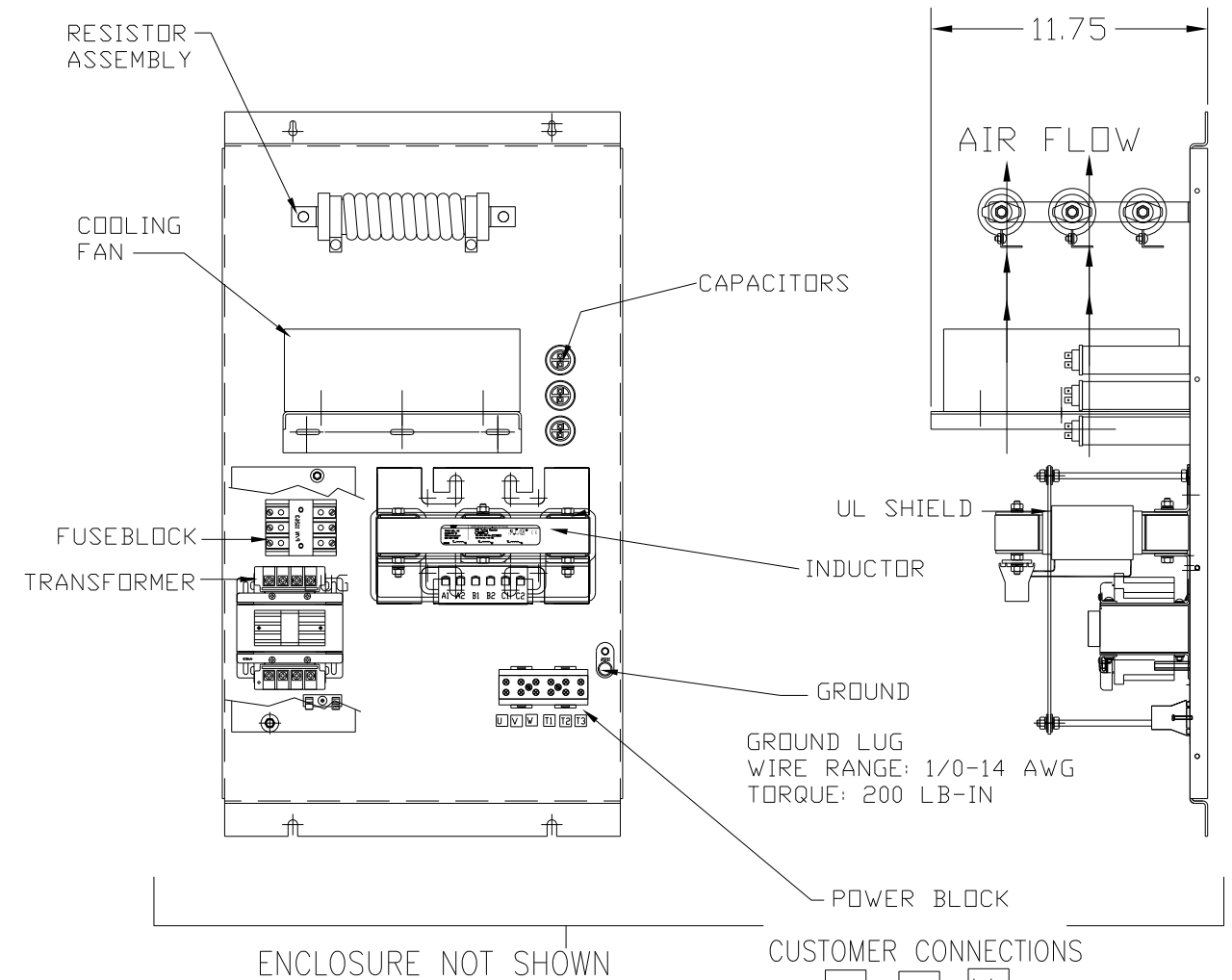
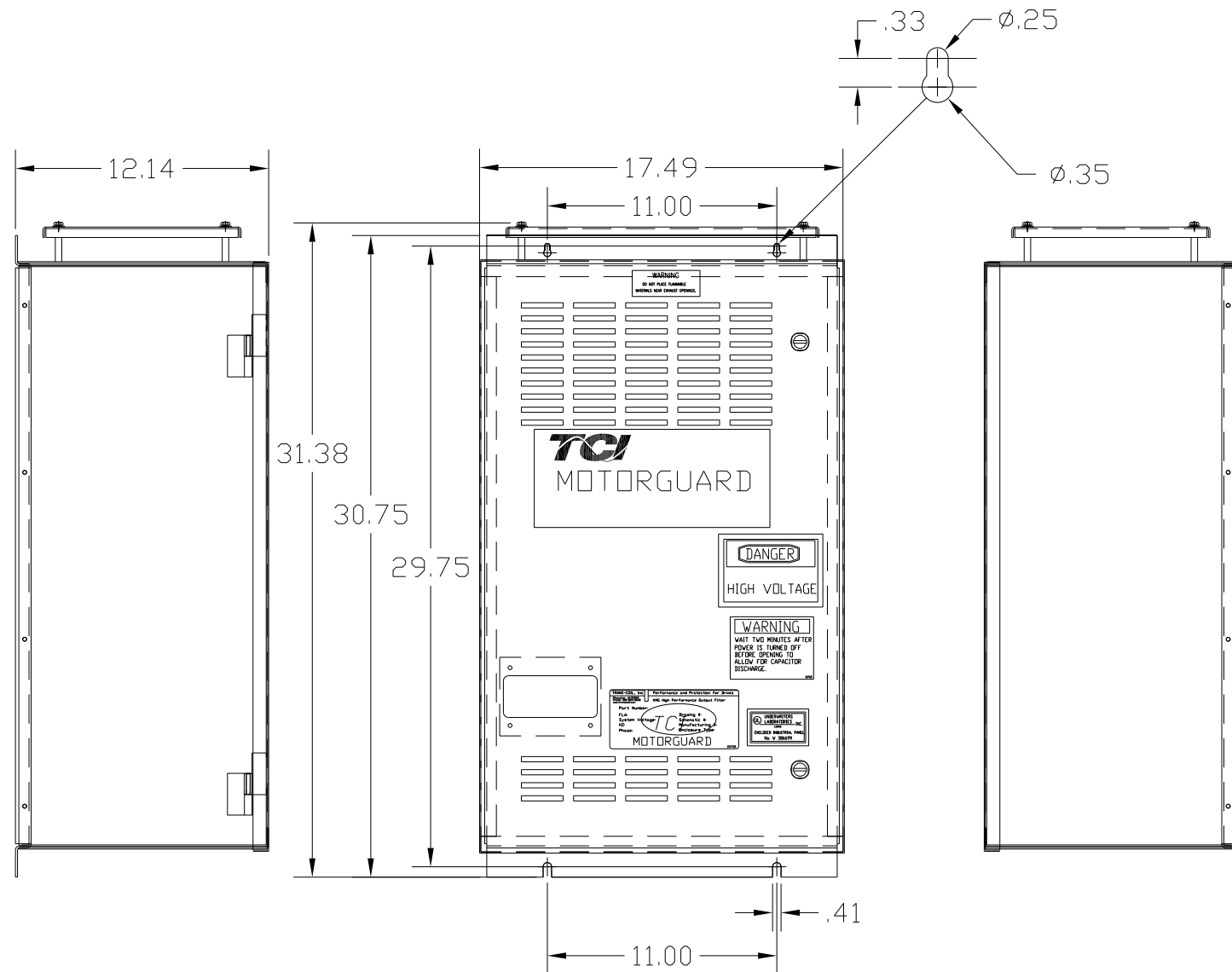


KMG HIGH PERFORMANCE OUTPUT FILTER

PART NUMBER: KMG25C01A
 FLA: 25
 SYSTEM VOLTAGE: 600
 HZ: 80
 PHASE: 3

DRAWING#: 104438DG
 SCHEMATIC: 24281-11A

MOTORGUARD



FOR SCHEMATIC SEE DRAWING P/N 24281-11A

LINE CONNECTIONS
 WIRE RANGE: 1 AWG THRU 4 AWG 35 LB-IN
 6 AWG THRU 14 AWG 30 LB-IN
 16 AWG THRU 22 AWG 25 LB-IN

CUSTOMER IS RESPONSIBLE FOR PROPER
 INSTALLATION OF ASSEMBLY IN ACCORDANCE
 WITH LOCAL AND NATIONAL CODES.

				TOLERANCES (EXCEPT AS NOTED)		7878 N. 86th STREET MILWAUKEE, WI 53224	
				DECIMAL			
				.XX ± .02		Standard, SineWave Filter ENCLOSED 20HP, 25AMP, 600V	
				.XXX ± .01			
				FRACTIONAL			
				± 1/32		DRN. BY: DSW DATE: 10/14/2010 DWG. NO.: 104438DG SCALE: TO FIT APRVD: SHT. 1 OF 1	
				ANGULAR			
				± 1/2°			
NO	REVISION	DATE	BY				