

KMG250C00A
 APPROX WEIGHT: 459LBS

KMG HIGH PERFORMANCE OUTPUT FILTER

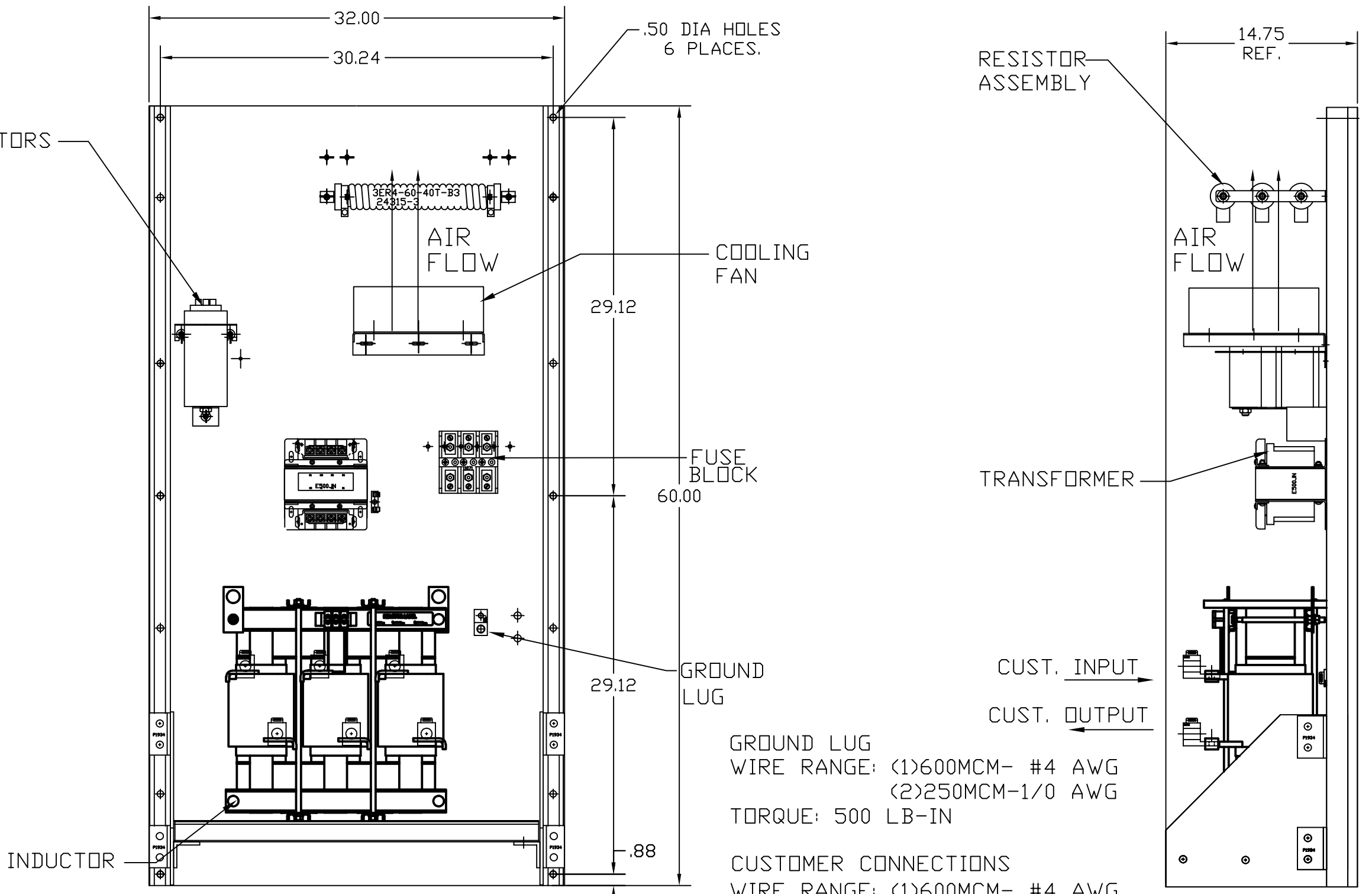
PART NUMBER: KMG250C00A
 FLA: 250
 SYSTEM VOLTAGE: 600
 HZ: 60
 PHASE: 3

DRAWING#: 104428DG
 SCHEMATIC: 24281-23A

MOTORGUARD

Thermal Switch Terminal Block

Wire Range: 18 AWG To 4 AWG.
 Torque: 20 LB-IN (2.3 Nm)
 Switch Opens on Temperature Rise
 Contact Rating: 6A @ 120 VAC



GROUND LUG
 WIRE RANGE: (1)600MCM- #4 AWG
 (2)250MCM-1/0 AWG
 TORQUE: 500 LB-IN

CUSTOMER CONNECTIONS
 WIRE RANGE: (1)600MCM- #4 AWG
 (2)250MCM-1/0 AWG
 TORQUE: 500 LB-IN

FOR SCHEMATIC SEE DRAWING P/N 24281-23A

CUSTOMER IS RESPONSIBLE FOR PROPER COOLING OF COMPONENTS IN CUSTOMERS ASSEMBLY

CUSTOMER IS RESPONSIBLE FOR PROPER INSTALLATION OF ASSEMBLY IN ACCORDANCE WITH LOCAL AND NATIONAL CODES.

				TOLERANCES (EXCEPT AS NOTED)
				DECIMAL
				.XX ±.02
				.XXX±.01
				FRACTIONAL
				± 1/32
				ANGULAR
				± 1/2°
NO	REVISION	DATE	BY	

TCL W132 N10611 GRANT DRIVE
 GERMANTOWN, WI. 53022

Standard, SineWave Filter
 Open, 250HP, 250AMP, 600V

DRN. BY DSW DATE 10/12/2010 DWG. NO. 104428DG
 SCALE TO FIT APRVD. B SHT.1 OF1

5099 ADD THERMAL SWITCH TB 02/19/20 JRN