

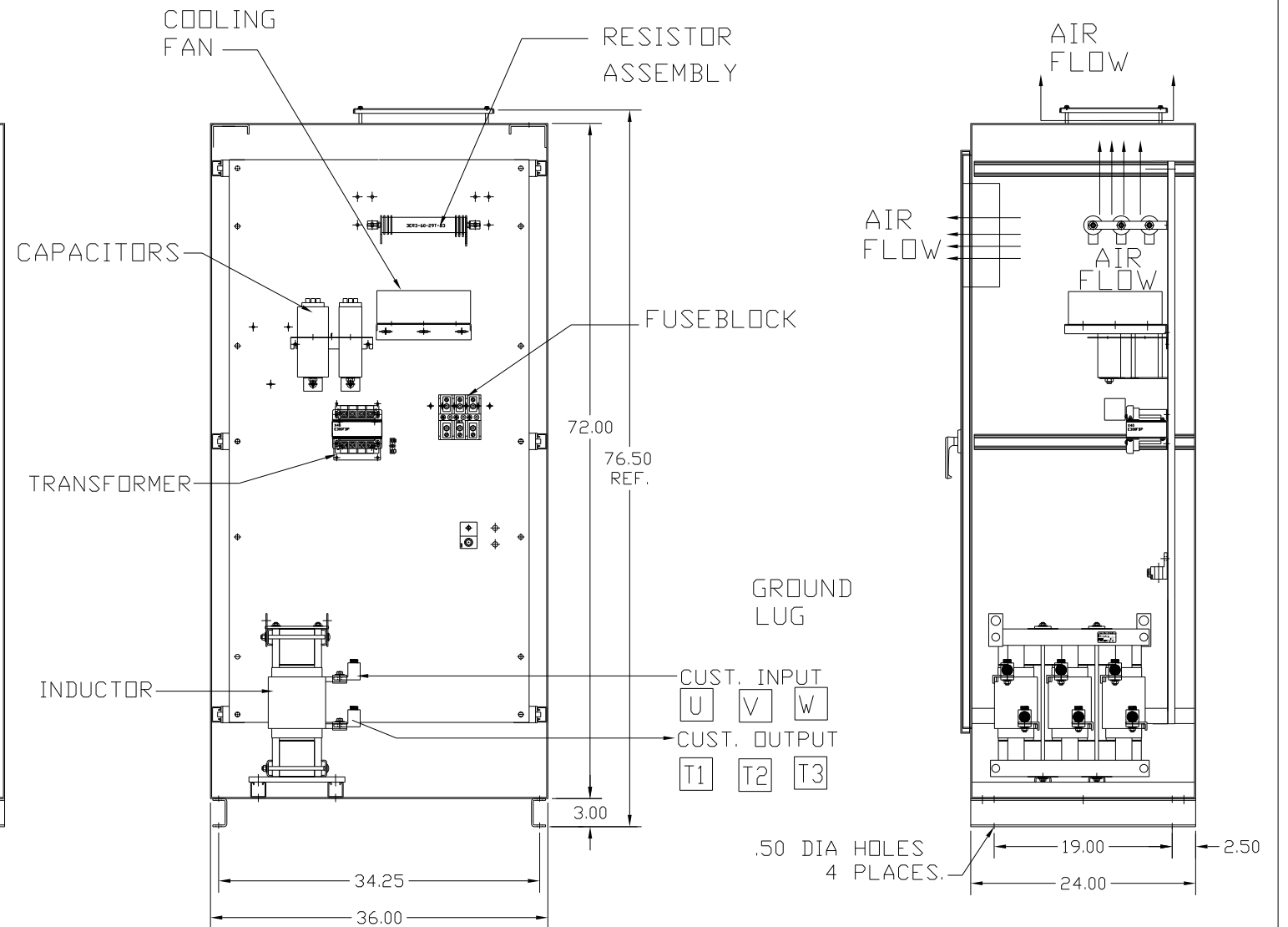
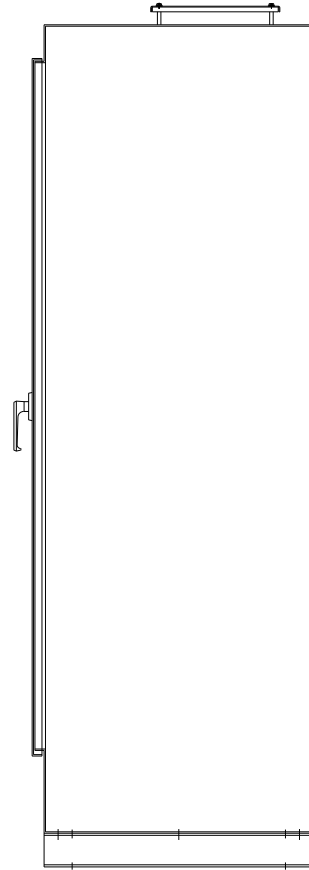
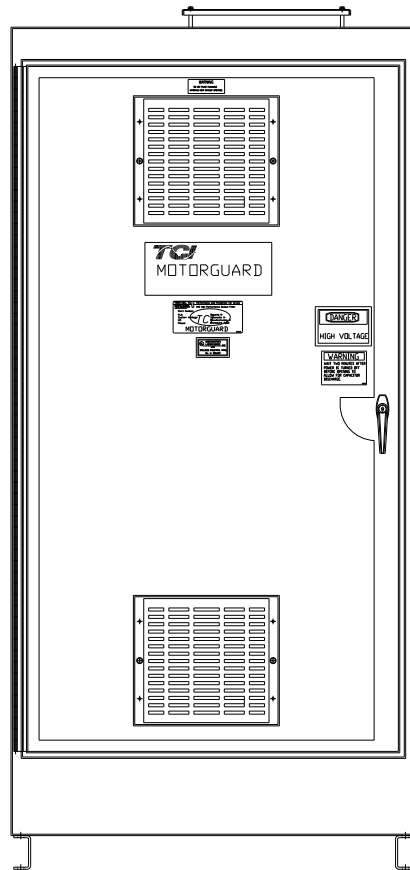
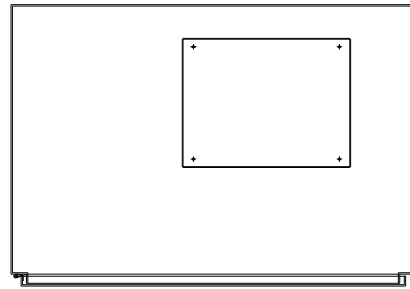
KMG250A01A

APPROX WEIGHT: 769LBS

FOR SCHEMATIC SEE DRAWING P/N 24281-3A

GROUND LUG  
 WIRE RANGE: (1)600MCM-#4 AWG  
 (2)250MCM-1/0 AWG  
 TORQUE: 500 LB-IN

LINE CONNECTIONS  
 WIRE RANGE: (1)600MCM-#4 AWG  
 (2)250MCM-1/0 AWG  
 TORQUE: 500 LB-IN



CUSTOMER IS RESPONSIBLE FOR PROPER  
 INSTALLATION OF ASSEMBLY IN ACCORDANCE  
 WITH LOCAL AND NATIONAL CODES.

KMG HIGH PERFORMANCE OUTPUT FILTER	
PART NUMBER: KMG250A01A	DRAWING#: 104362DG
FLA: 250	SYSTEM VOLTAGE: 480
HZ: 80	SCHEMATIC: 24281-3A
PHASE: 3	
MOTORGUARD	

				TOLERANCES (EXCEPT AS NOTED):		7878 N. 86th STREET MILWAUKEE, WI 53224	
				DECIMAL			
				.XX ± .02		Standard, SineWave Filter ENCLOSED, 200HP, 250AMP, 480V	
				.XXX ± .01			
				FRACTIONAL		DRN. BY: DSW DATE: 10/07/2010 DWG. NO: 104362DG	
				± 1/32		SCALE: TO FIT APRVD. C	
				ANGULAR		SHT. 1 OF 1	
				± 1/2°			
NO	REVISION	DATE	BY				