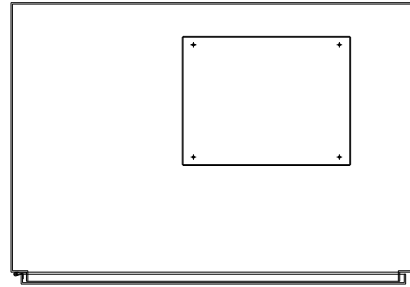


KMG200C01A
 APPROX WEIGHT: 768LBS

FOR SCHEMATIC SEE DRAWING P/N 24281-23A



KMG HIGH PERFORMANCE OUTPUT FILTER

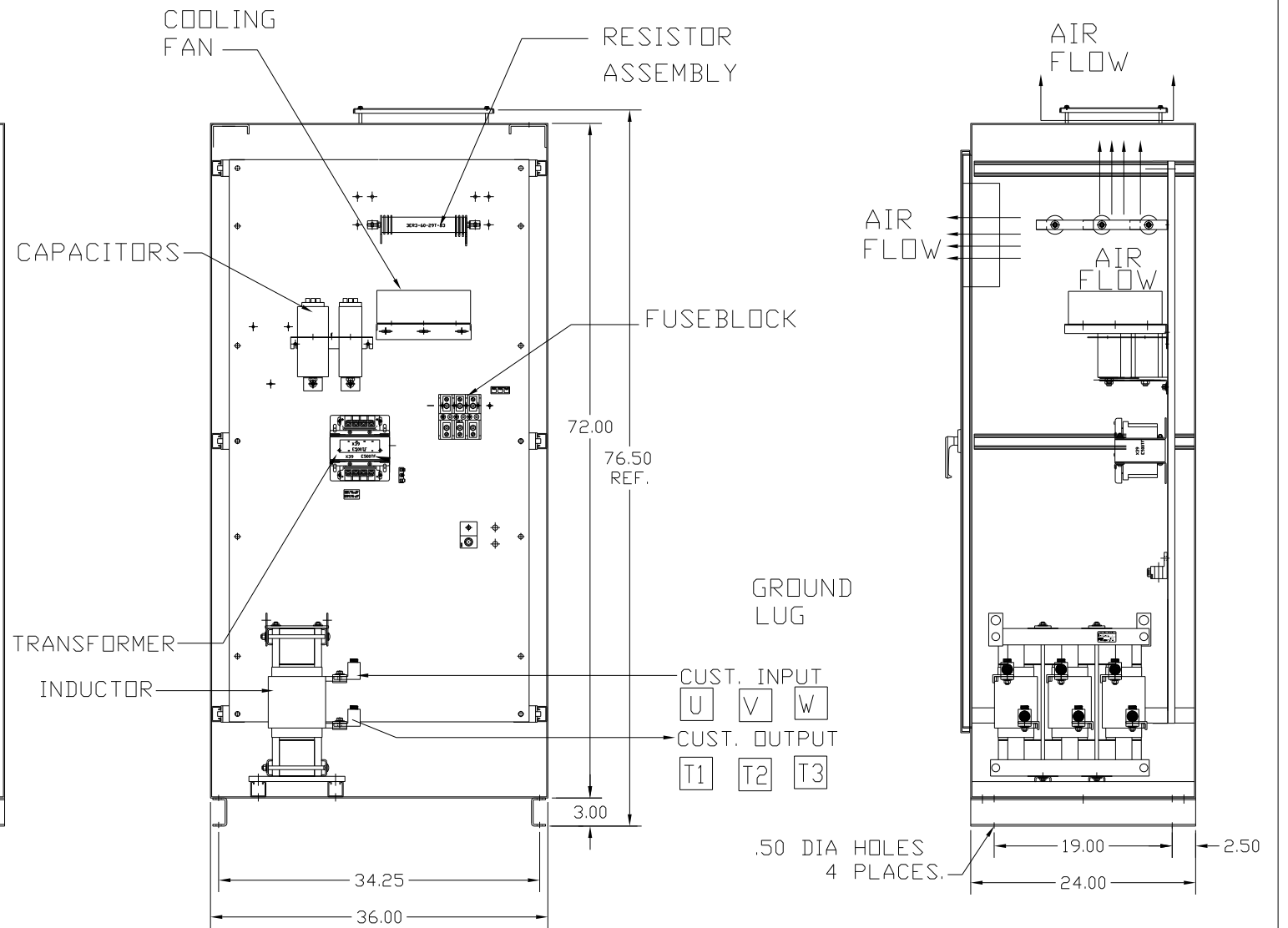
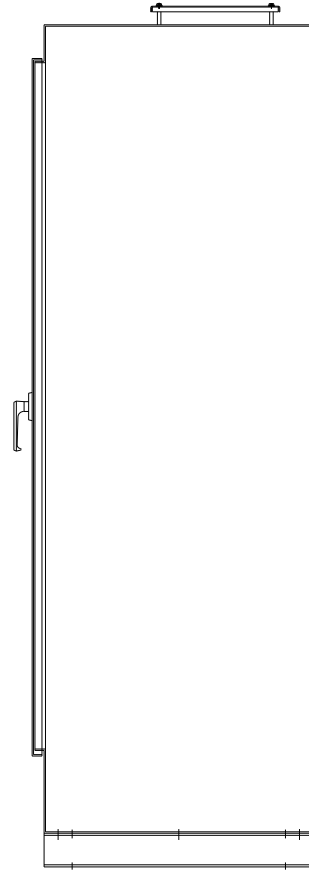
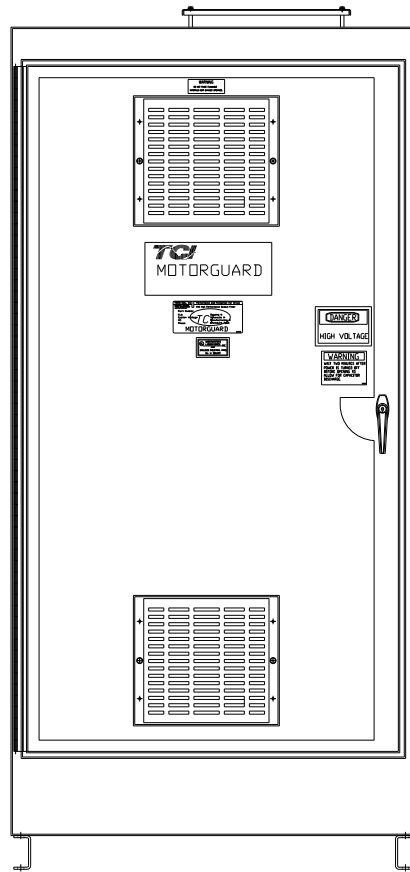
PART NUMBER: KMG200C01A

FLA: 200 DRAWING#: 104448DG
 SYSTEM VOLTAGE: 600 SCHEMATIC: 24281-23A
 HZ: 80
 PHASE: 3

MOTORGUARD

GROUND LUG
 WIRE RANGE: 250MCM-#6 AWG
 TORQUE: 275 LB-IN

LINE CONNECTIONS
 WIRE RANGE: 250MCM-#6 AWG
 TORQUE: 275 LB-IN



CUSTOMER IS RESPONSIBLE FOR PROPER
 INSTALLATION OF ASSEMBLY IN ACCORDANCE
 WITH LOCAL AND NATIONAL CODES.

				TOLERANCES (EXCEPT AS NOTED):		7878 N. 86th STREET MILWAUKEE, WI 53224 Standard, SineWave Filter ENCLOSED, 200HP, 200AMP, 600V
				DECIMAL		
				.XX ± .02		
				.XXX ± .01		
				FRACTIONAL		
				± 1/32		
				ANGULAR		
				± 1/2°		
NO	REVISION	DATE	BY	SCALE	TO FIT	DRN. BY: DSW DATE: 10/18/10 DWG. NO.: 104448DG SCALE: TO FIT APRVD. SHT. 1 OF 1