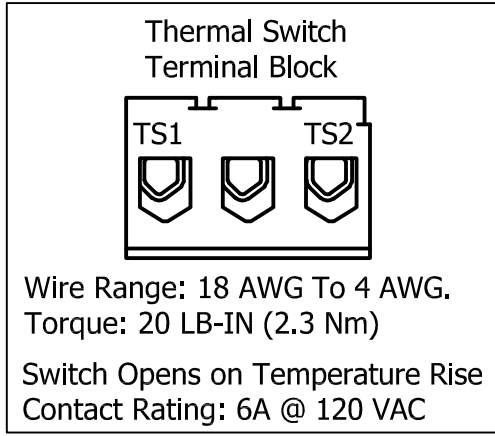
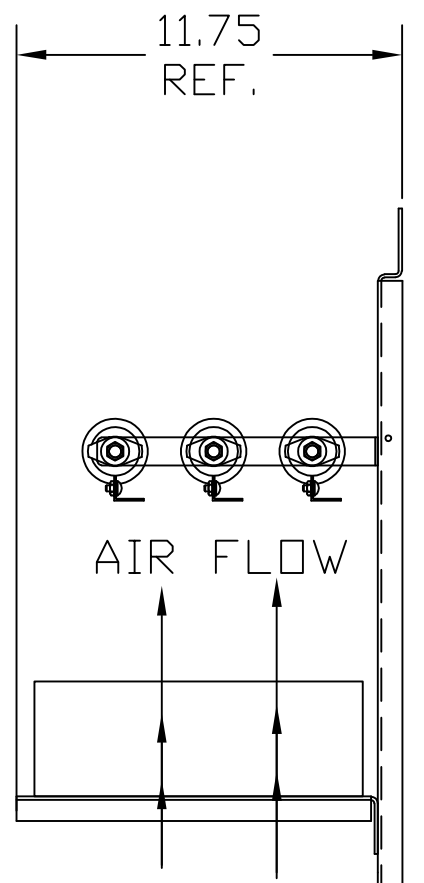
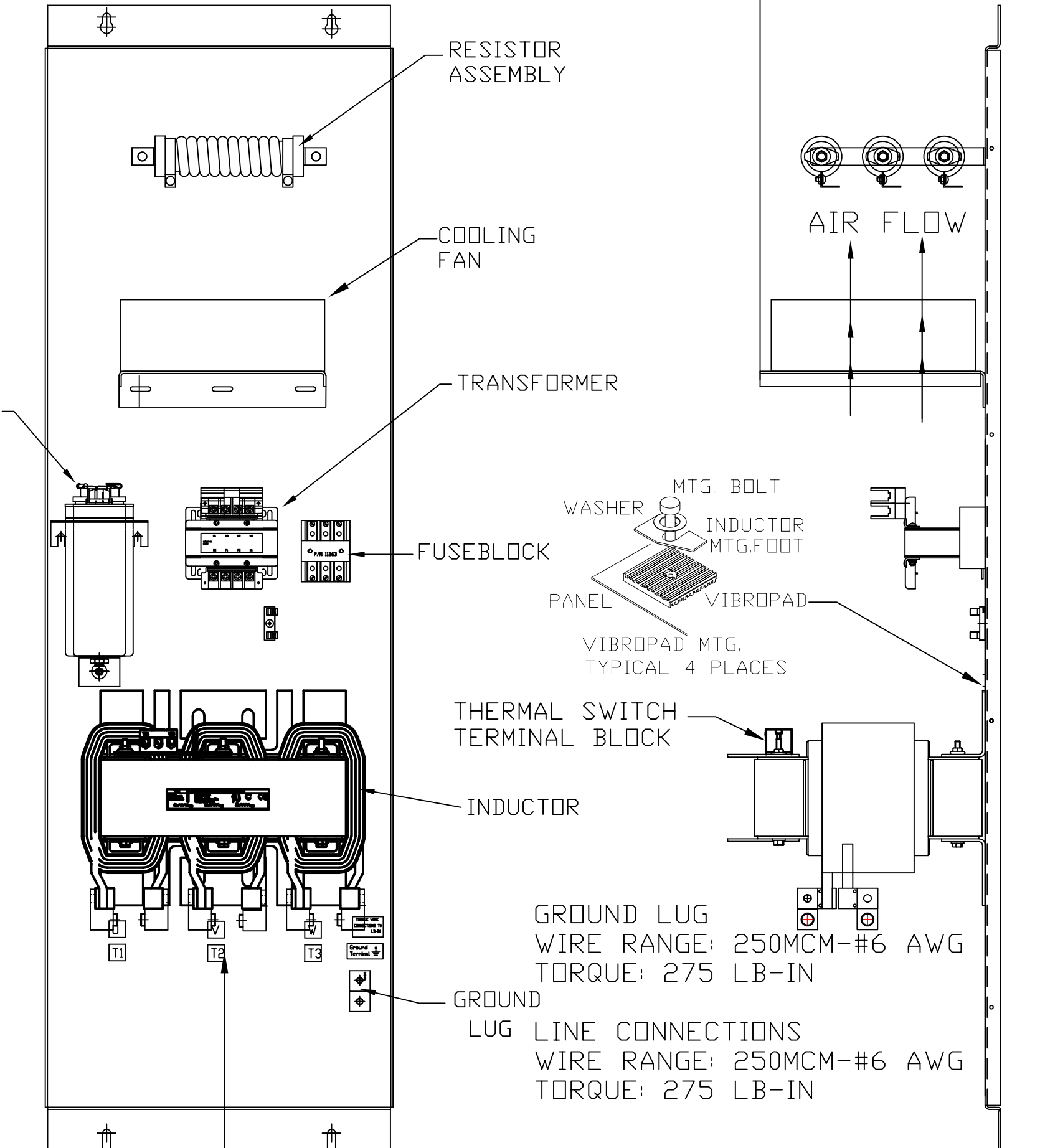
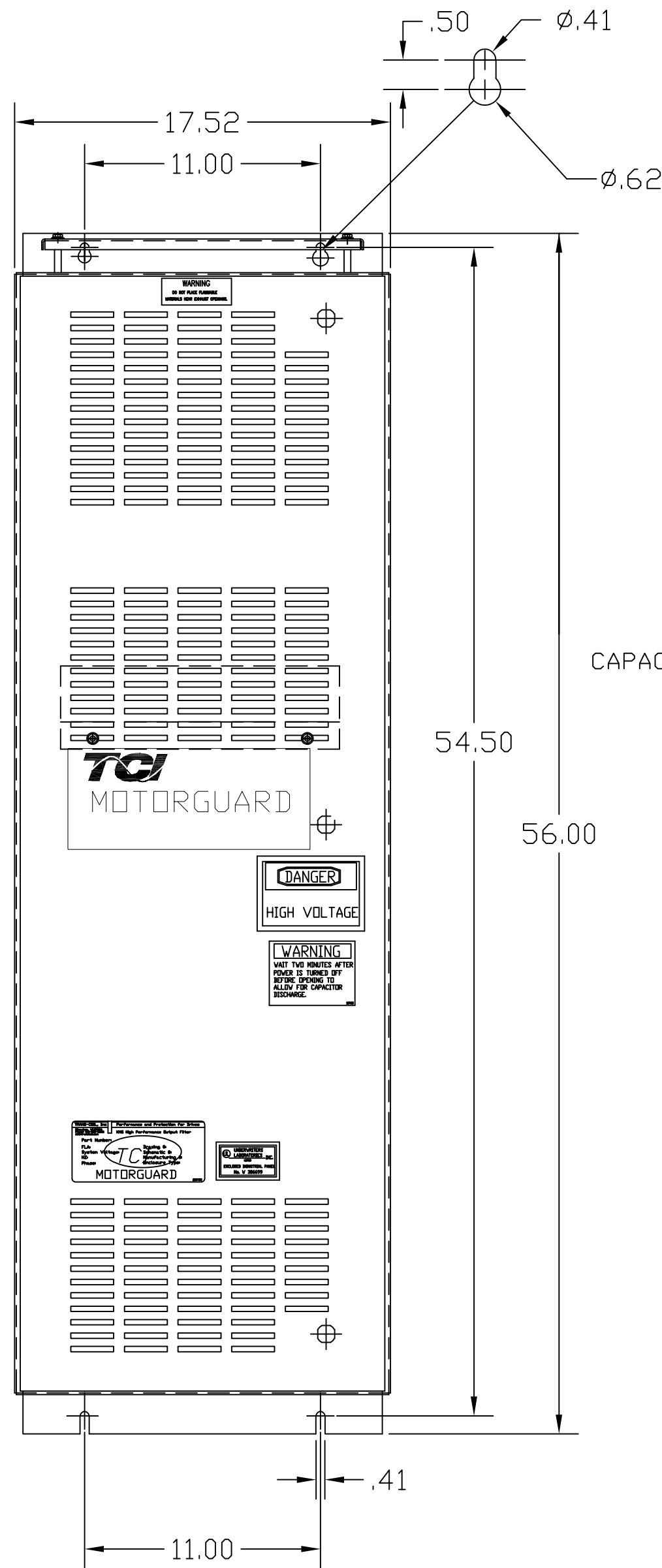
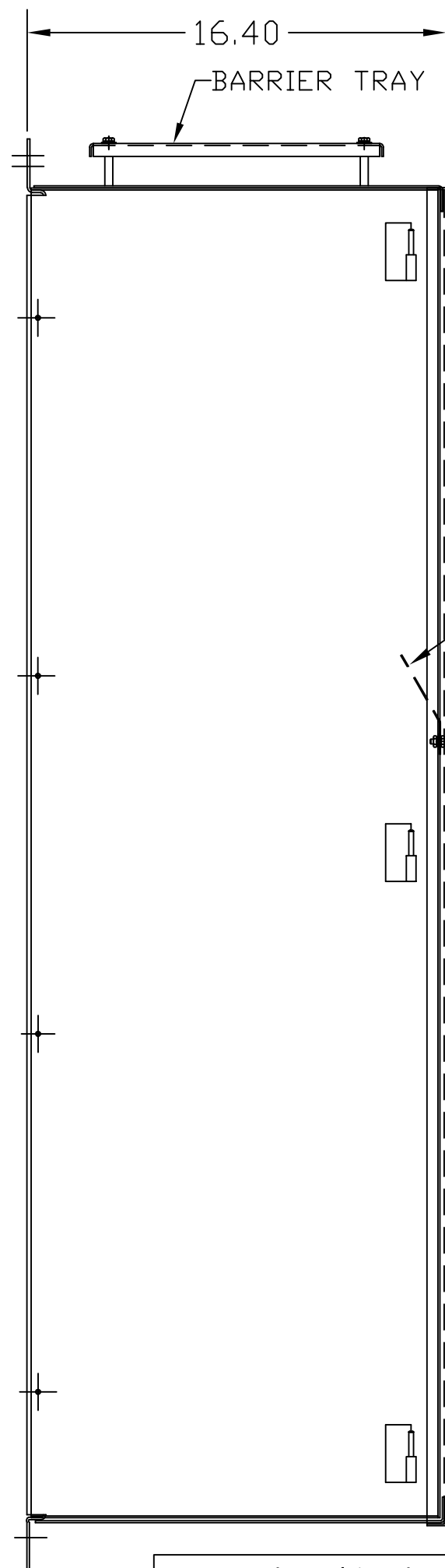


KMG200A01A

APPROX WEIGHT: 344LBS

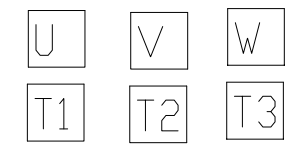
FOR SCHEMATIC SEE DRAWING P/N 24281-3A



SUGGESTED LOCATION FOR CUSTOMER INPUT/OUTPUT

ENCLOSURE NOT SHOWN

CUSTOMER CONNECTIONS



CUSTOMER IS RESPONSIBLE FOR PROPER INSTALLATION OF ASSEMBLY IN ACCORDANCE WITH LOCAL AND NATIONAL CODES.

KMG HIGH PERFORMANCE OUTPUT FILTER

PART NUMBER: KMG200A01A

FLA: 200 DRAWING#: 104361DG

SYSTEM VOLTAGE: 480 SCHEMATIC: 24281-3A

HZ: 60

PHASE: 3

MOTORGUARD

				TOLERANCES (EXCEPT AS NOTED)		TCL 7878 N. 86th STREET MILWAUKEE, WI 53224	
				DECIMAL		Standard SineWave Filter ENCLOSED, 150HP, 200AMP, 480V	
B	5344	T/S TB ADDED	08/07/20	JRN	.XX ± .02	DRN. BY	DSW
A	2702	RVSD UL SHIELD	3/1/12	RJC	.XXX ± .01	DATE	10/07/2010
NO		REVISION	DATE	BY	ANGULAR ± 1/2°	SCALE	TO FIT
						DWG. NO.	C 104361DG
						SHT. 1	OF 1