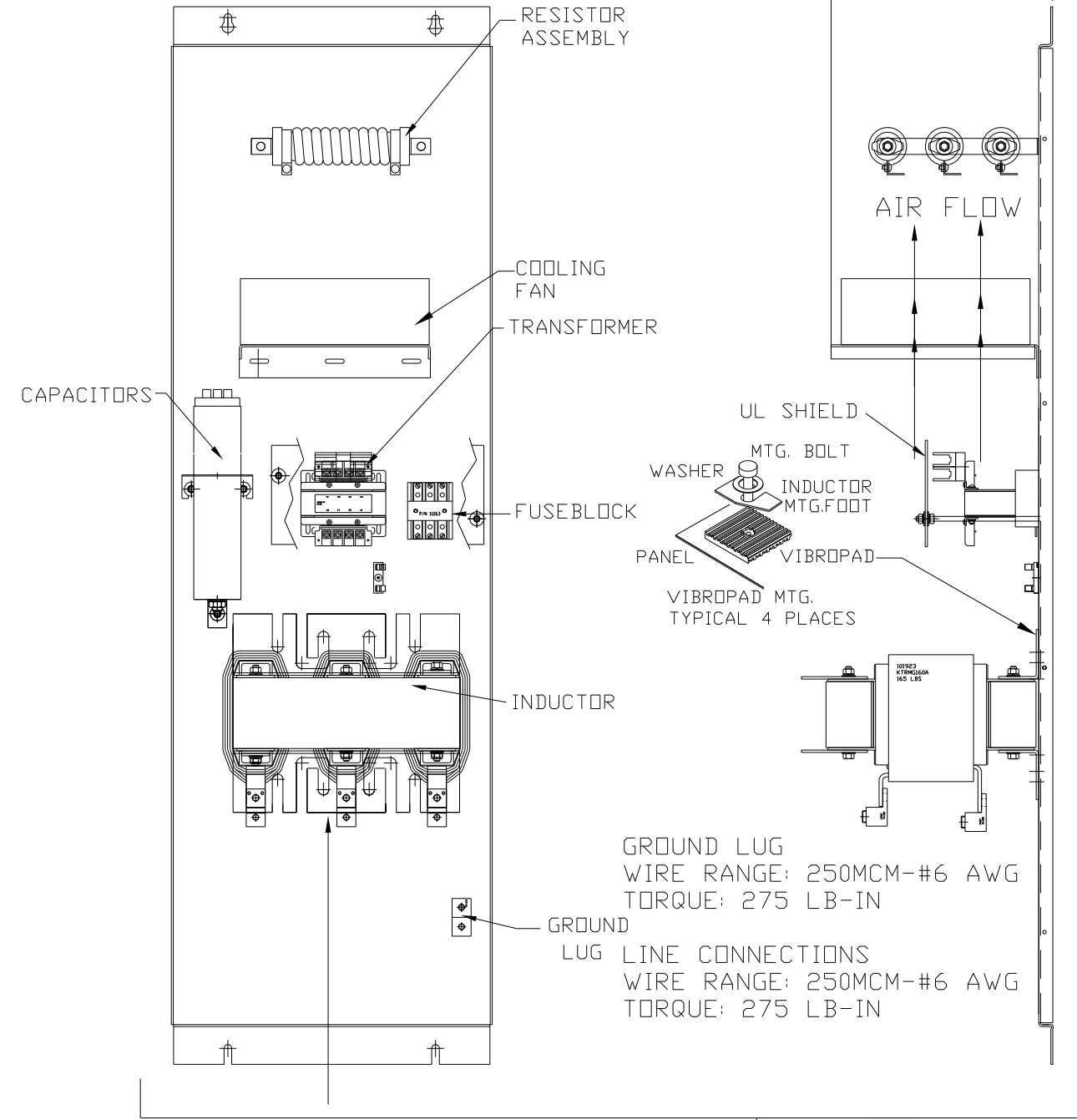
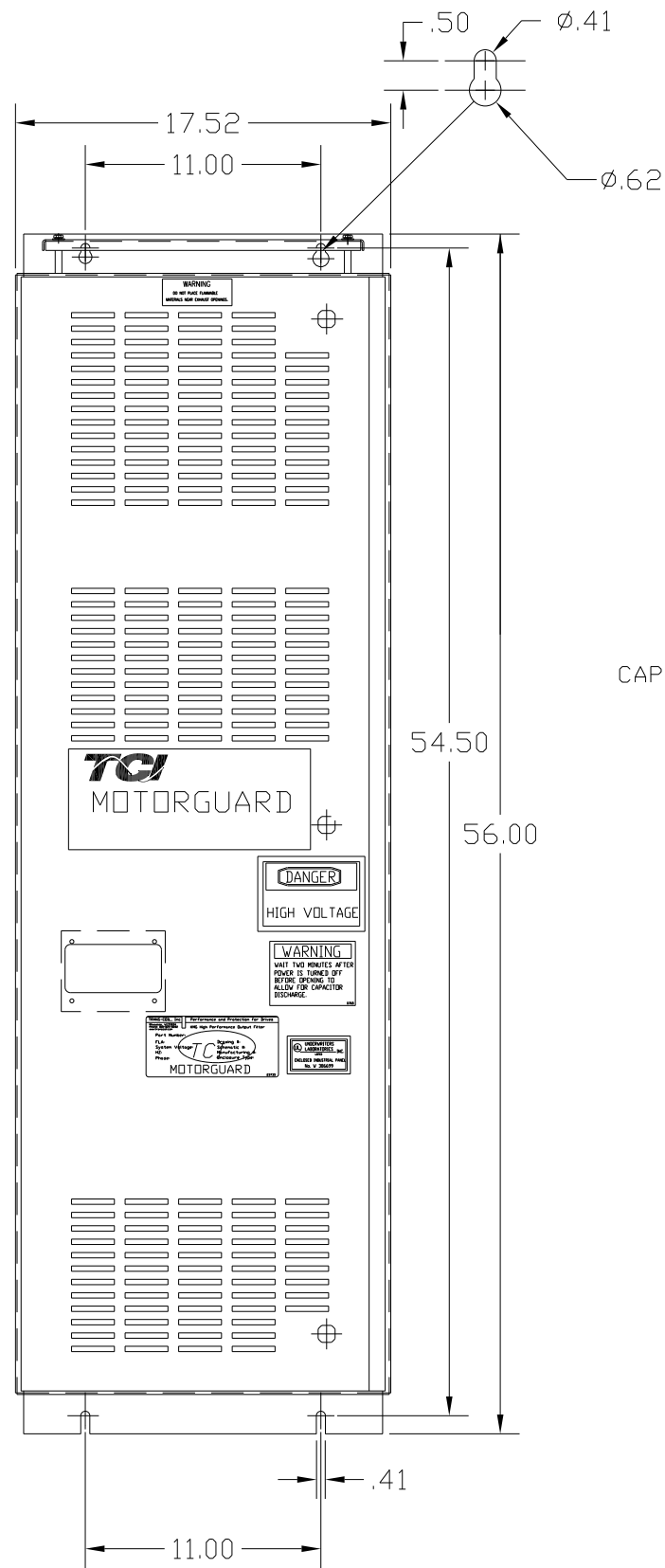
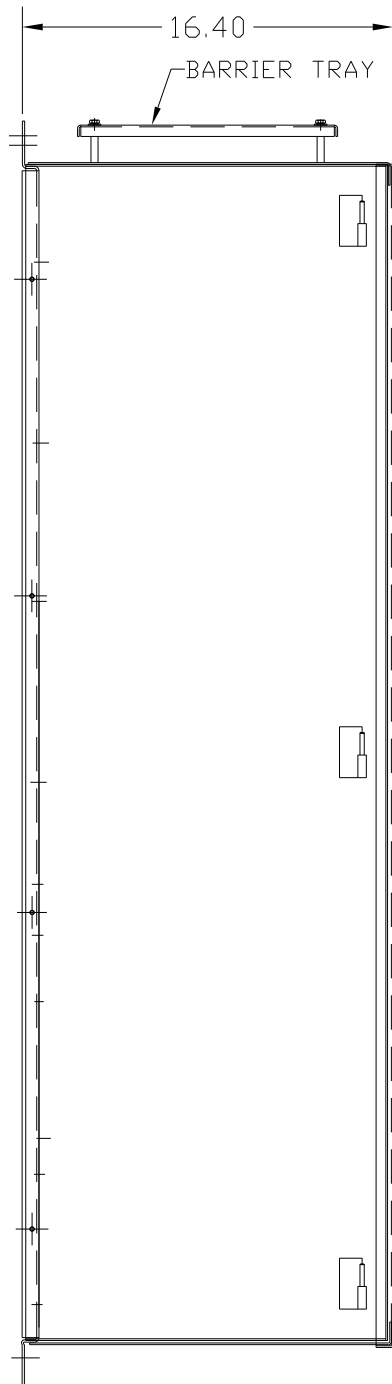


KMG160A01A

APPROX WEIGHT: 339LBS

FOR SCHEMATIC SEE DRAWING P/N 24281-3A



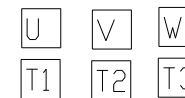
GROUND LUG  
WIRE RANGE: 250MCM-#6 AWG  
TORQUE: 275 LB-IN

LUG LINE CONNECTIONS  
WIRE RANGE: 250MCM-#6 AWG  
TORQUE: 275 LB-IN

SUGGESTED LOCATION FOR CUSTOMER INPUT/OUTPUT

ENCLOSURE NOT SHOWN

CUSTOMER CONNECTIONS



CUSTOMER IS RESPONSIBLE FOR PROPER INSTALLATION OF ASSEMBLY IN ACCORDANCE WITH LOCAL AND NATIONAL CODES.

KMG HIGH PERFORMANCE OUTPUT FILTER

PART NUMBER: KMG160A01A

FLA: 160

SYSTEM VOLTAGE: 480

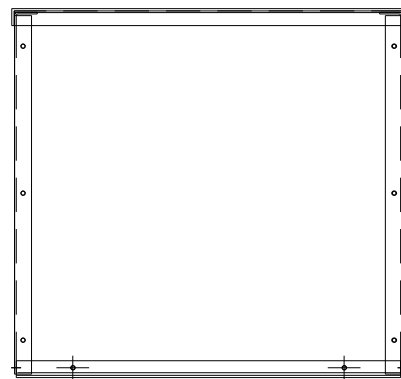
HZ: 80

PHASE: 3

DRAWING#: 104360DG

SCHEMATIC: 24281-3A

MOTORGUARD



				TOLERANCES (EXCEPT AS NOTED)		7878 N. 86th STREET MILWAUKEE, WI 53224	
				DECIMAL		Standard SineWave Filter	
				.XX ± .02		ENCLOSED, 125HP, 160AMP, 480V	
				.XXX ± .01		DRN. BY DSW DATE 10/07/2010 DWG. NO. 104360DG	
				FRACTIONAL		SCALE TO FIT	
				± 1/32		APRVD. C	
				ANGULAR		SHT. 1 OF 1	
				± 1/2°			
NO	REVISION	DATE	BY				