

# KMG130C00A

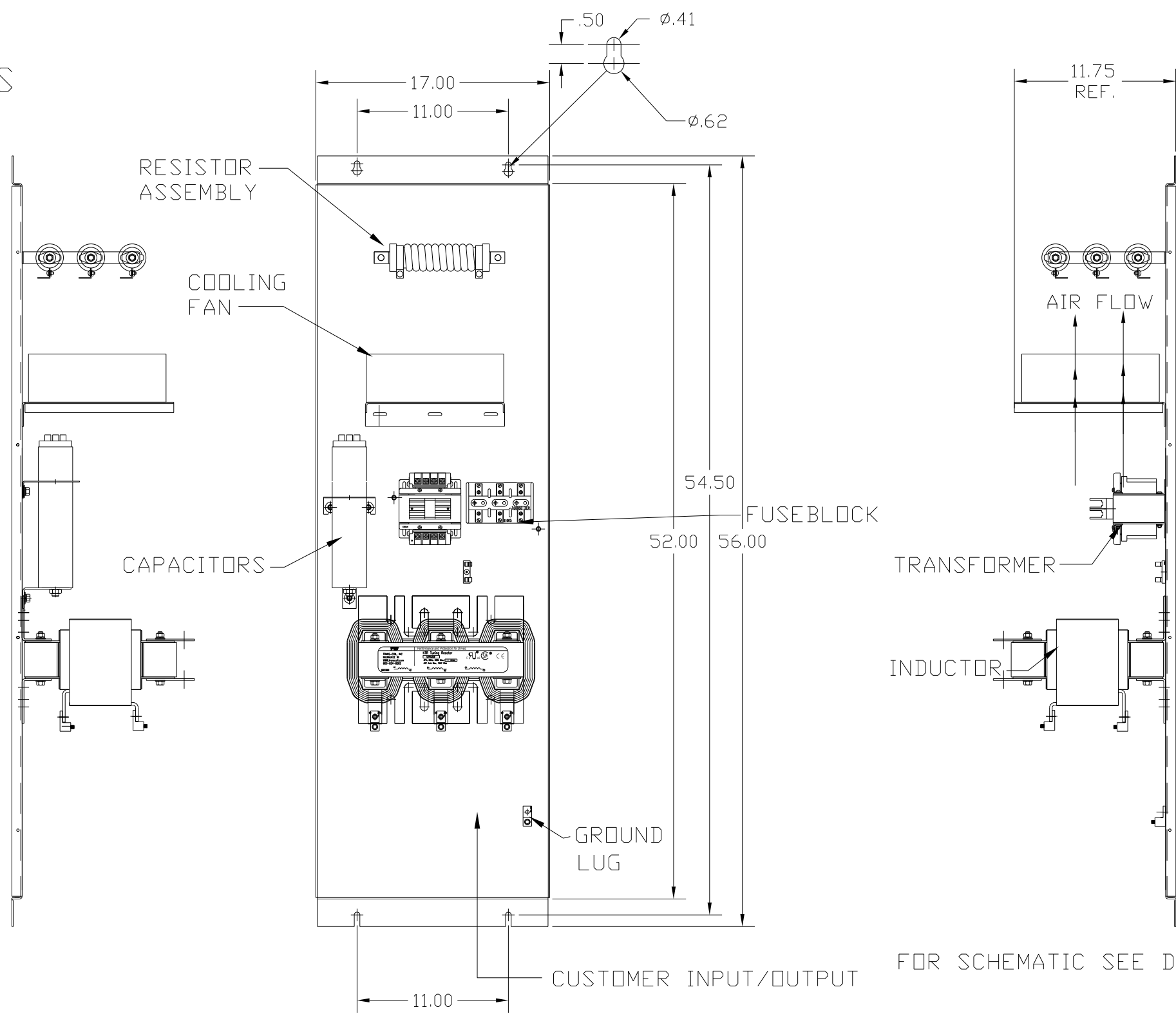
APPROX WEIGHT: 249LBS

KMG HIGH PERFORMANCE OUTPUT FILTER

PART NUMBER: KMG130C00A  
 FLA: 130  
 SYSTEM VOLTAGE: 600  
 HZ: 80  
 PHASE: 3

DRAWING#: 104425DG  
 SCHEMATIC: 24281-23A

MOTORGUARD



FOR SCHEMATIC SEE DRAWING P/N 24281-23A

GROUND LUG  
 WIRE RANGE: 2/0-#6 AWG  
 TORQUE: 120 LB-IN

LINE CONNECTIONS  
 WIRE RANGE: 2/0-#6 AWG  
 TORQUE: 120 LB-IN

CUSTOMER IS RESPONSIBLE FOR PROPER COOLING OF COMPONENTS IN CUSTOMERS ASSEMBLY

CUSTOMER IS RESPONSIBLE FOR PROPER INSTALLATION OF ASSEMBLY IN ACCORDANCE WITH LOCAL AND NATIONAL CODES.

NO	REVISION	DATE	BY	TOLERANCES (EXCEPT AS NOTED)
				DECIMAL
				.XX ± .02
				.XXX ± .01
				FRACTIONAL
				± 1/32
				ANGULAR
				± 1/2°

**TCL** 7878 N. 86th STREET  
 MILWAUKEE, WI 53224

Standard, SineWave Filter  
 Open, 125HP, 130AMP, 600V

DRN. BY DSW DATE 10/12/2010 DWG. NO. 104425DG  
 SCALE TO FIT APRVD. B SHT. 1 OF 1