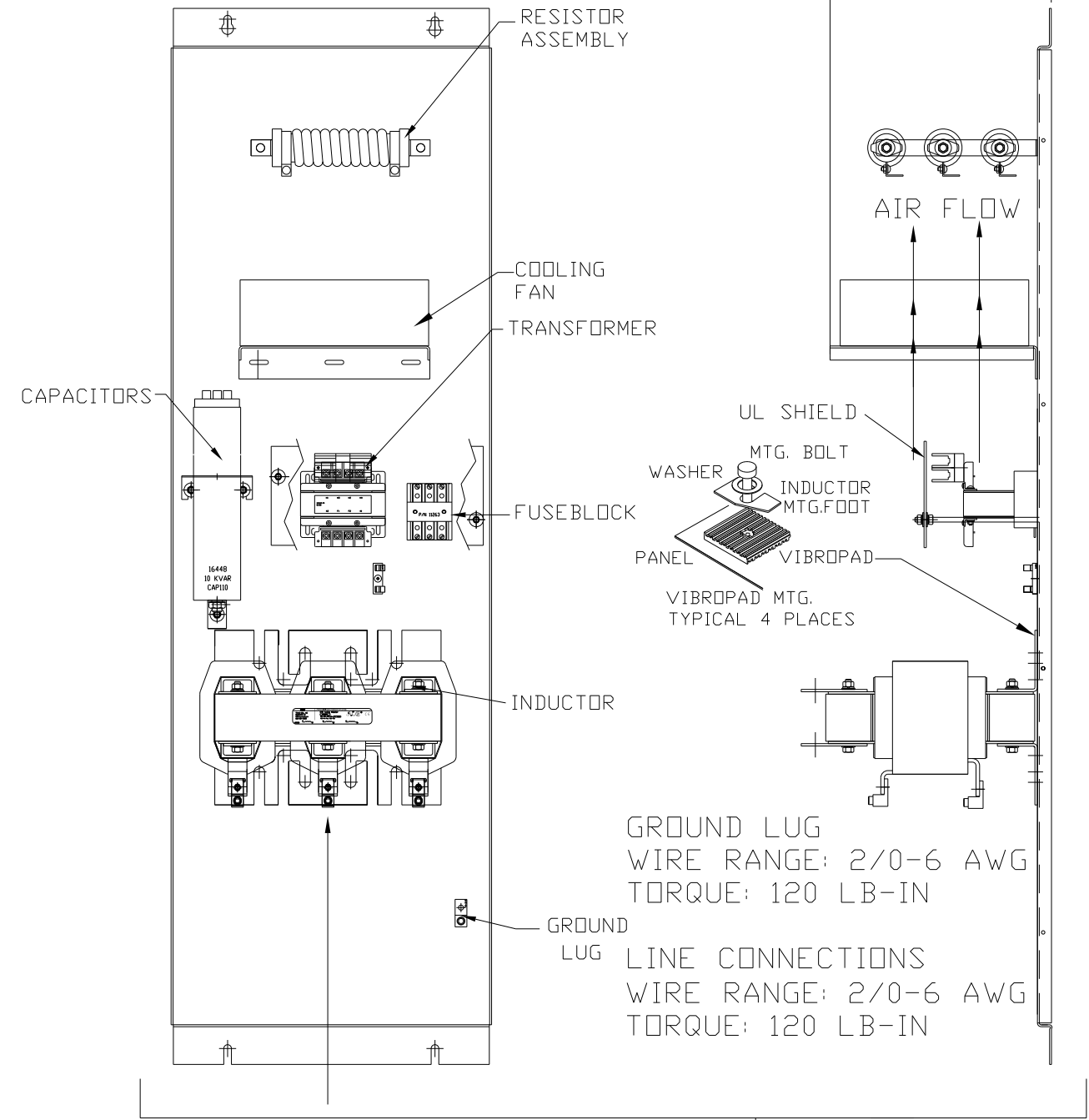
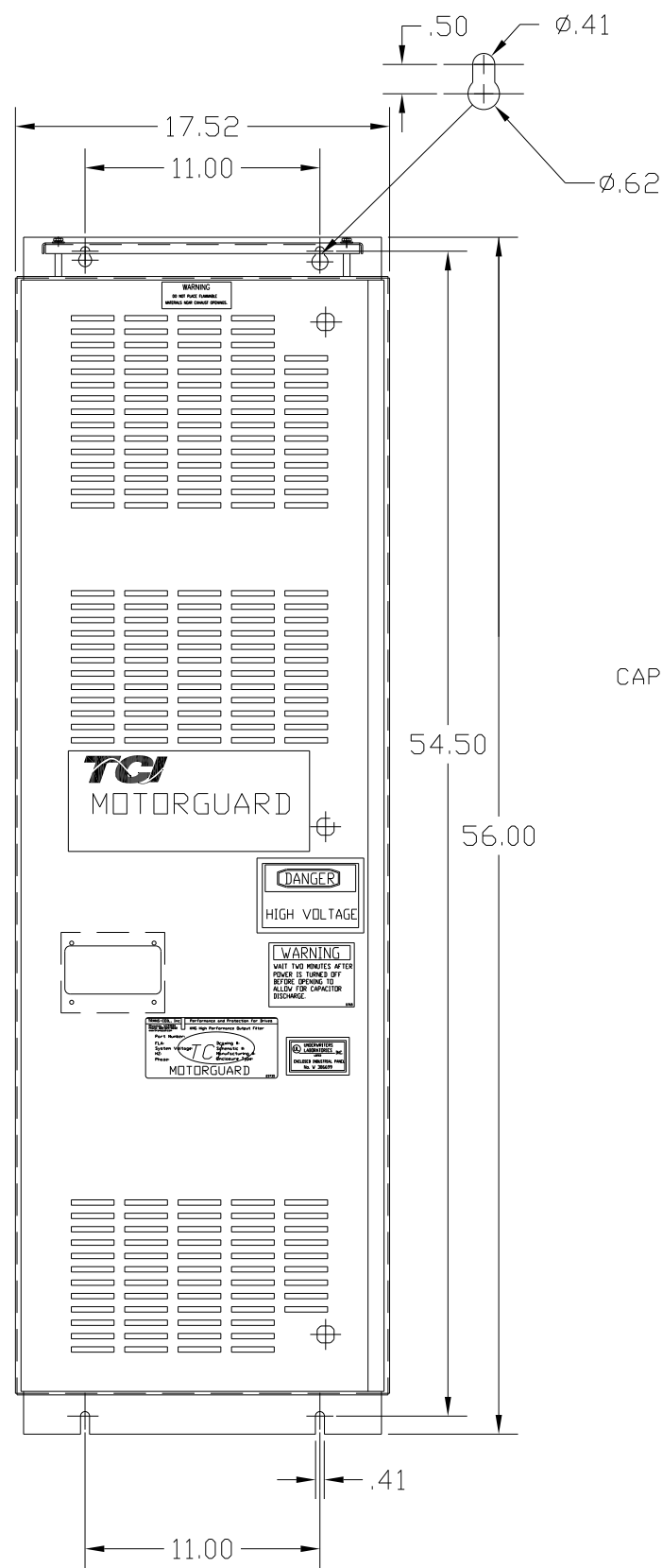
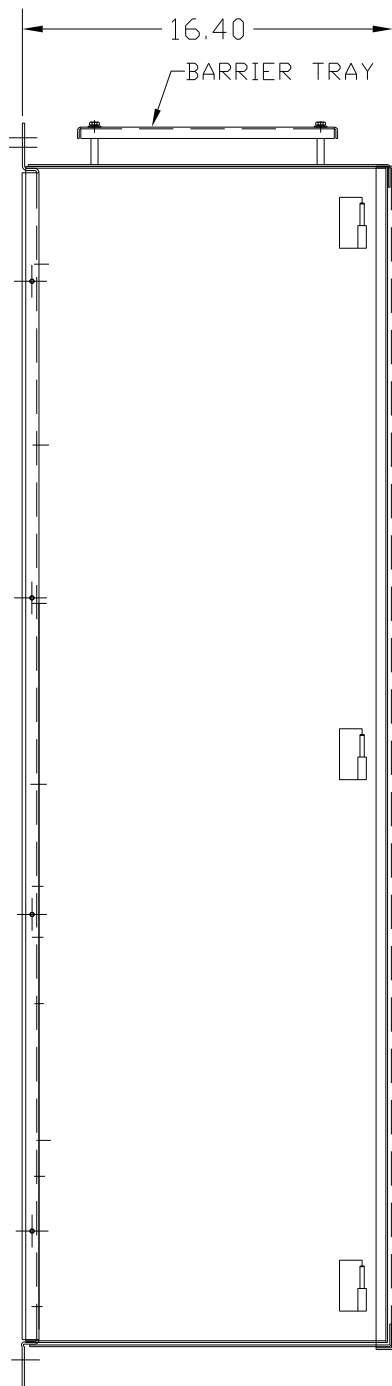


KMG110A01A

APPROX WEIGHT: 279LBS

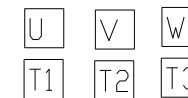
FOR SCHEMATIC SEE DRAWING P/N 24281-3A



SUGGESTED LOCATION FOR CUSTOMER INPUT/OUTPUT

ENCLOSURE NOT SHOWN

CUSTOMER CONNECTIONS



CUSTOMER IS RESPONSIBLE FOR PROPER INSTALLATION OF ASSEMBLY IN ACCORDANCE WITH LOCAL AND NATIONAL CODES.

KMG HIGH PERFORMANCE OUTPUT FILTER

PART NUMBER: KMG110A01A

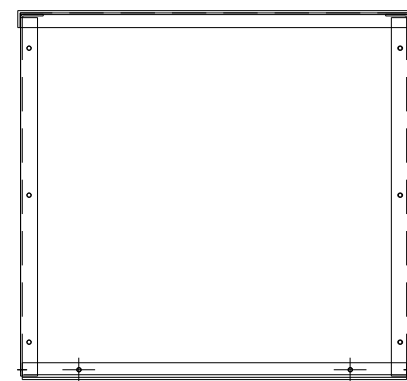
FLA: 110      DRAWING#: 104358DG

SYSTEM VOLTAGE: 480      SCHEMATIC: 24281-3A

HZ: 80

PHASE: 3

**MOTORGUARD**



				TOLERANCES (EXCEPT AS NOTED)		7878 N. 86th STREET MILWAUKEE, WI 53224	
				DECIMAL			
				.XX ± .02		Standard SineWave Filter ENCLOSED, 75HP, 110AMP, 480V	
				.XXX ± .01			
				FRACTIONAL		DRN. BY: DSW      DATE: 10/07/2010      DWG. NO. 104358DG	
				± 1/32		SCALE TO FIT      APRVD.      C	
				ANGULAR		SHT. 1 OF 1	
				± 1/2°			
NO	REVISION	DATE	BY				