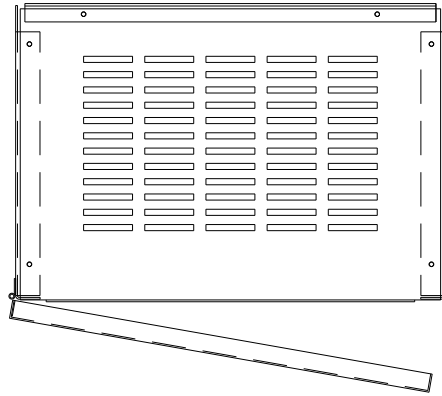
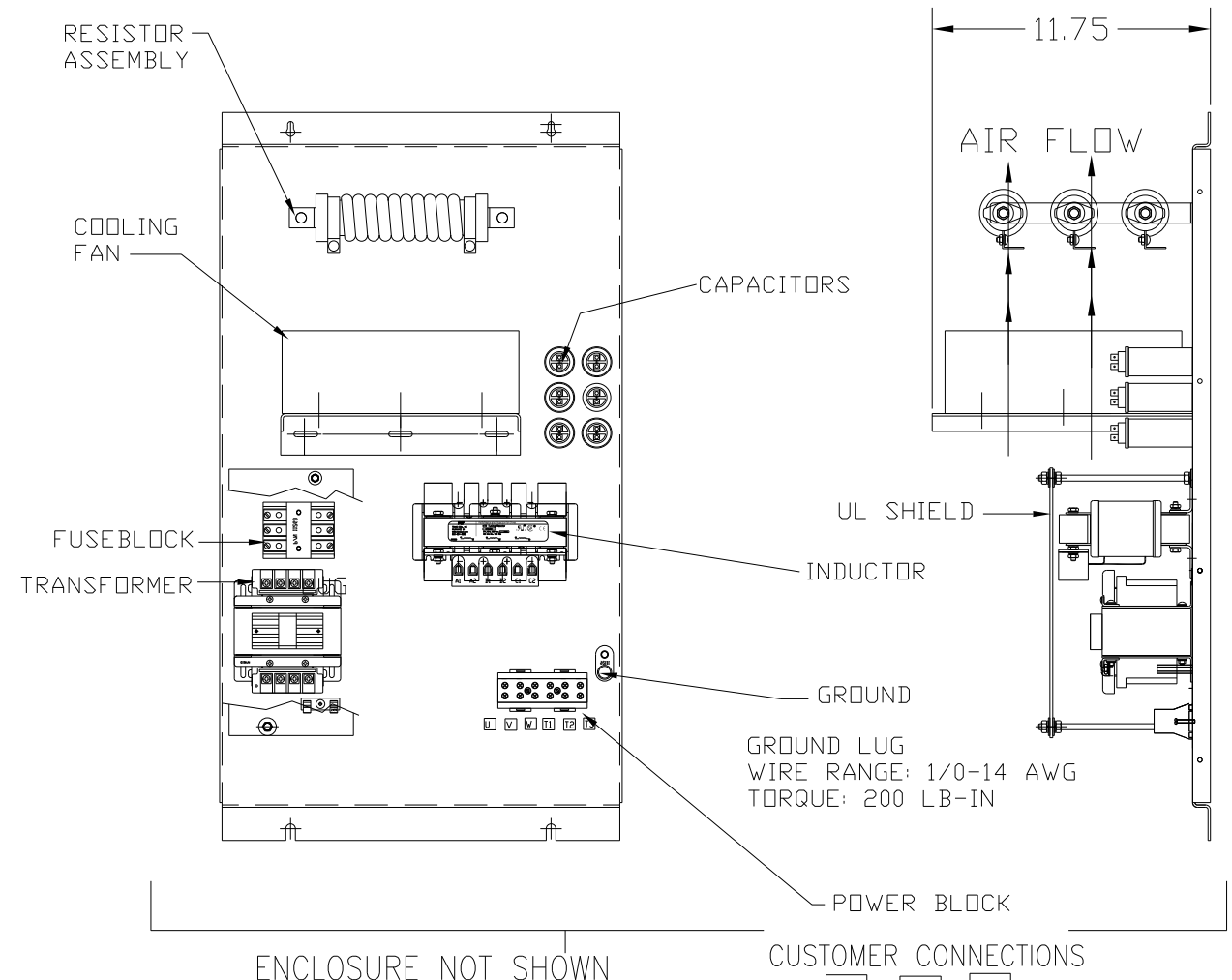
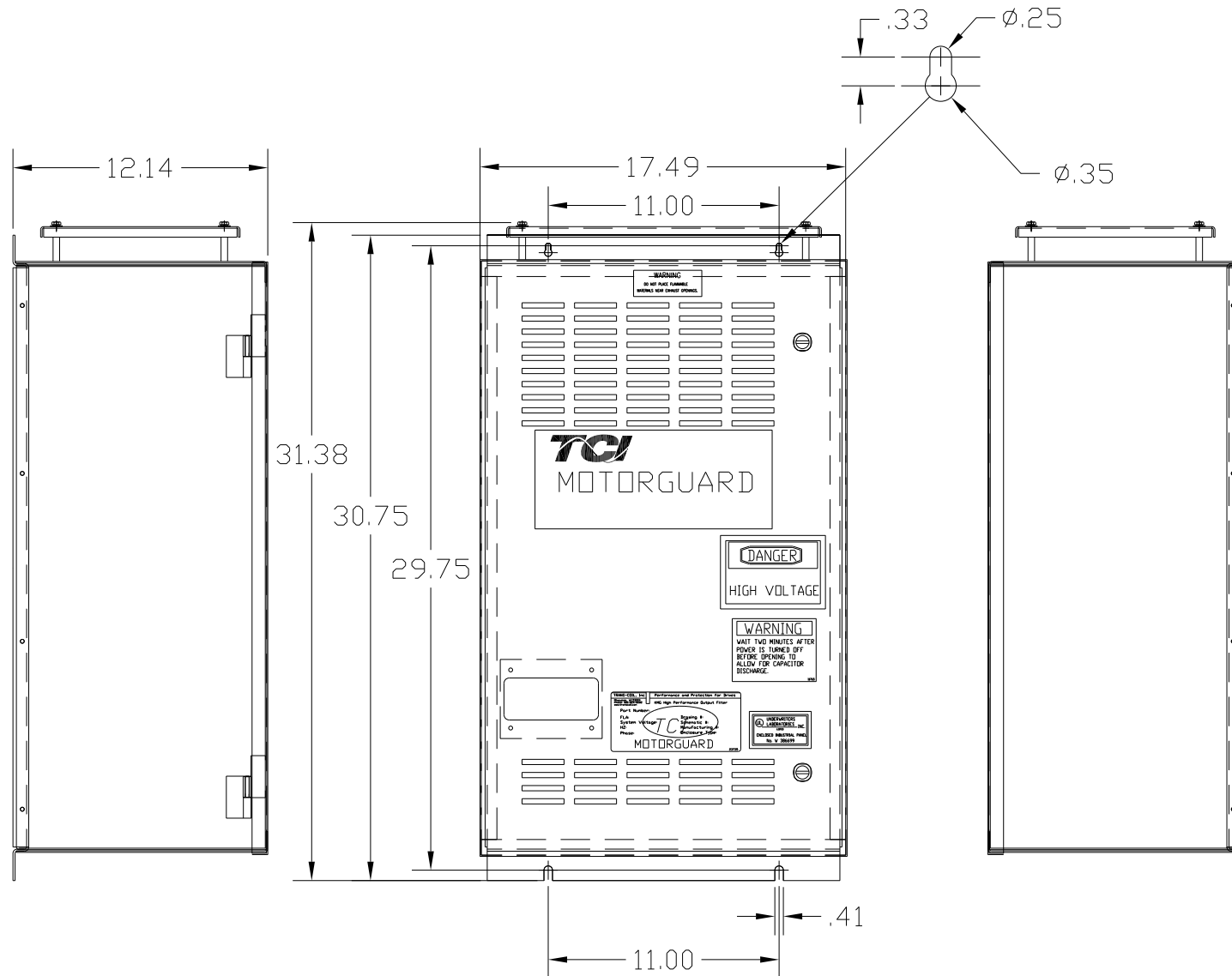


KMG10C01A

APPROX WEIGHT: 114LBS



KMG HIGH PERFORMANCE OUTPUT FILTER	
PART NUMBER: KMG10C01A	
FLA: 10	DRAWING#: 104435DG
SYSTEM VOLTAGE: 600	SCHEMATIC: 24281-11A
HZ: 80	
PHASE: 3	
MOTORGUARD	



FOR SCHEMATIC SEE DRAWING P/N 24281-11A

CUSTOMER IS RESPONSIBLE FOR PROPER INSTALLATION OF ASSEMBLY IN ACCORDANCE WITH LOCAL AND NATIONAL CODES.

ENCLOSURE NOT SHOWN	CUSTOMER CONNECTIONS
	<div style="display: flex; justify-content: space-around;"> <div style="border: 1px solid black; padding: 2px;">U</div> <div style="border: 1px solid black; padding: 2px;">V</div> <div style="border: 1px solid black; padding: 2px;">W</div> </div> <div style="display: flex; justify-content: space-around; margin-top: 5px;"> <div style="border: 1px solid black; padding: 2px;">T1</div> <div style="border: 1px solid black; padding: 2px;">T2</div> <div style="border: 1px solid black; padding: 2px;">T3</div> </div>
	<p>LINE CONNECTIONS</p> <p>WIRE RANGE: 1 AWG THRU 4 AWG 35 LB-IN</p> <p>6 AWG THRU 14 AWG 30 LB-IN</p> <p>16 AWG THRU 22 AWG 25 LB-IN</p>

				TOLERANCES (EXCEPT AS NOTED):	7878 N. 86th STREET MILWAUKEE, WI 53224	
				DECIMAL		
				.XX ± .02		
				.XXX ± .01		
FRACTIONAL	± 1/32		ANGULAR	± 1/2°		
	NO	REVISION		DATE	BY	SCALE
	TO FIT			APRVD.	DWG. NO.	SHT. 1 OF 1