

CATALOG NO	VOLTS(V.)	__mH-±10%	__AMPS(A)	APPROX WT-LBS
KLRUL55ETB	28.75	.801	55	49
KLRUL80CTB	24.00	.459	80	49
KLRUL80DTB	17.25	.330	80	49
KLRUL80ETB	28.75	.550	80	49

TRANS-COIL, INC
MILWAUKEE WI
WWW.transcoil.com
800-824-8282

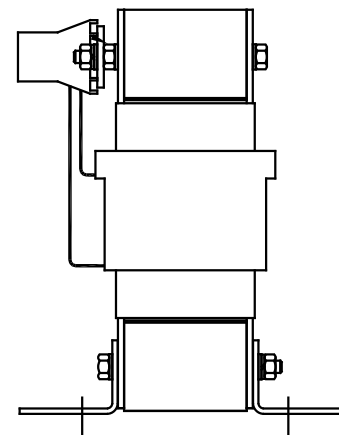
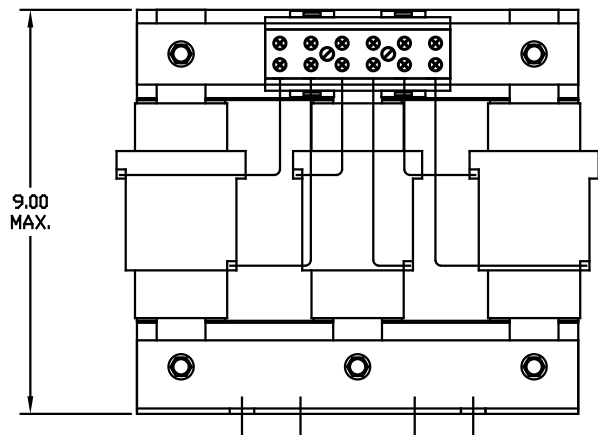
Performance and Protection for Drives.
KLR Series Line Reactor

CATALOG# _____

3PH, 60Hz, 600V Max, Arrows

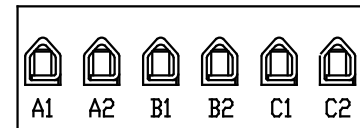
40C Amb Max, 155C Rise

Terminal Torque LB-IN



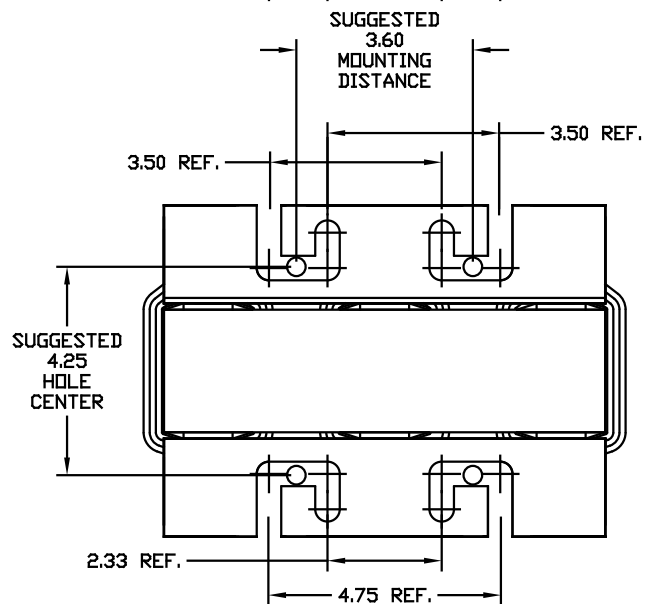
TERMINAL BLOCK
TORQUE(LB-IN)=CUSTOMER WIRE

35 = 1 AWG THRU 4 AWG
30 = 6 AWG THRU 14 AWG
25 = 16 AWG THRU 22 AWG



TERMINAL BLK MARKING

NOTE: A1, A2, B1, B2, C1, C2,
MARKINGS ON TERMINAL BLOCK
FOR REFERENCE ONLY.



				TOLERANCES EXCEPT AS NOTED:		7878 N. 86th STREET MILWAUKEE, WI 53224	
				DECIMAL			
				.XX ± .03		KLRUL OPEN (FRAME G) LINE REACTOR	
				.XXX ± .010			
				FRACTIONAL ± 1/16		DSG BY: DSW DATE: 05/10/04 DWG. NO.: KLRULOPEN-9DG	
				ANGULAR ± 1/2°		SCALE: 1/2"=1" APPRVA: [Signature]	
NO.	REVISION	DATE	BY			SHIT. 1 OF 1	